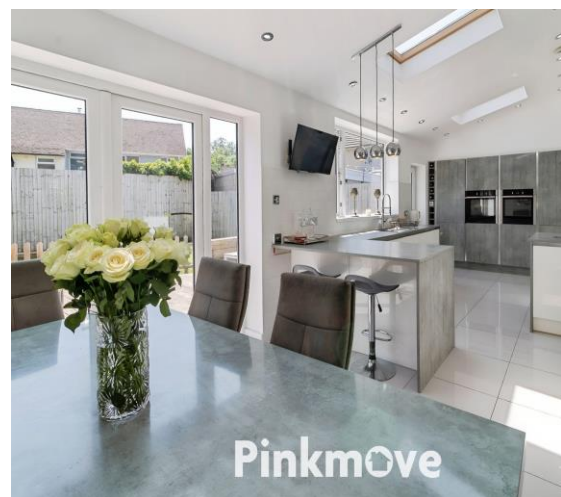




Tanybryn

£350,000

- 4 Bedrooms
- En-Suite To Master Bedroom
- Modern Open-Plan Kitchen/Diner
- Single Garage With Off Road Parking
- Low Maintenance Rear Garden
- Immaculate Condition Throughout
- EPC Rating: C



 4  2  1

Pinkmove

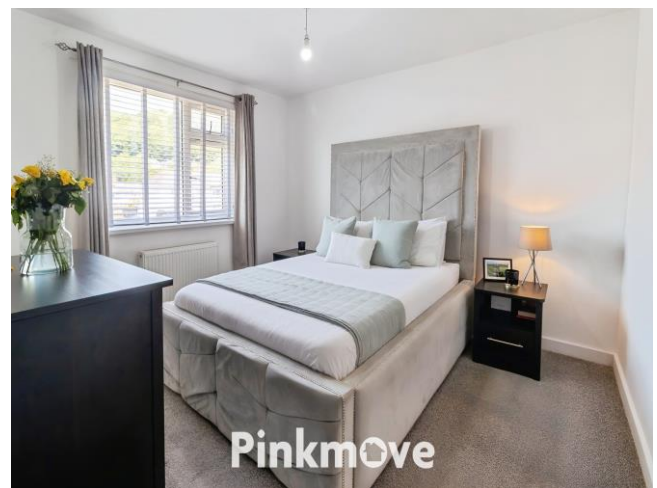
01633 746088
team@pinkmove.co.uk



Pinkmove

About the property

A beautifully presented four-bedroom semi-detached home featuring a spacious open-plan kitchen, elegant reception room, en-suite master with walk-in wardrobe, garage, off-street parking, and a low-maintenance garden. Immaculate throughout and ready to move in.



Pinkmove



Pinkmove



Accommodation

Living Room

11' 10" x 23' 3" (3.61m x 7.09m)
max measurements

Kitchen/Diner

11' 8" x 25' 5" (3.56m x 7.75m)
max measurements

Utility Room

11' 10" x 4' 3" (3.61m x 1.30m)

Garage

7' 9" x 10' 1" (2.36m x 3.07m)

Bedroom 1

12' 10" x 10' 7" (3.91m x 3.23m)
max measurements

Walk In Wardrobe

9' 8" x 6' 3" (2.95m x 1.91m)

En-Suite

9' 8" x 5' (2.95m x 1.52m)
max measurements

Bedroom 2

11' 11" x 7' 6" (3.63m x 2.29m)

Bedroom 3

8' 11" x 8' 11" (2.72m x 2.72m)
max measurements

Bedroom 4

9' 7" x 7' 7" (2.92m x 2.31m)
max measurements

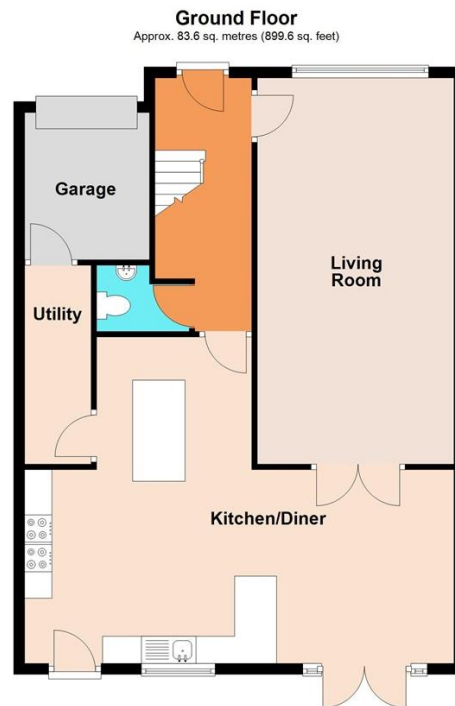
Bathroom

10' 8" x 9' 9" (3.25m x 2.97m)
max measurements

Downstairs WC

4' 5" x 5' 7" (1.35m x 1.70m)
max measurements

Floorplan



Total area: approx. 137.9 sq. metres (1484.8 sq. feet)
1 Tanybryn

Important Information

Note while we endeavour to make our sales details accurate and reliable, if there is any point which is of particular interest to you, please contact the office and we will be pleased to confirm the position for you. We have not personally tested any apparatus, equipment, fixtures, fittings or services and cannot verify they are in working order or fit for their purposes. Nothing in these particulars is intended to indicate that carpets or curtains, furnishings or fittings, electrical goods (whether wired or not). Gas fires or light fittings or any other fixtures not expressly included form part of the property offered for sale. This computer generated Floorplan, if applicable, is intended as a general guide to the layout and design of the property. It is not to scale and should not be relied upon for dimensions. Tenure: We cannot confirm the tenure of the property as we have not had access to the legal documents. The buyer is advised to obtain verification from their solicitor or surveyor.

Peter Alan Limited is registered in England and Wales under company number 2073153, Registered Office is Cumbria House, 16-20 Hockliffe Street, Leighton Buzzard, Bedfordshire, LU7 1GN. VAT Registration Number is 500 2481 05. For activities relating to regulated mortgages and non-investment insurance contracts, Peter Alan Limited is an appointed representative of Connells Limited which is authorised and regulated by the Financial Conduct Authority. Connells Limited's Financial Services Register number is 302221. Most buy-to-let