



James Prosser Way, offers in the region of £385,000

- EV Charging Point
- Off Street Parking For 3 Cars
- Large Spacious Garden
- En-Suite Leading To Master Bedroom
- Garden Office
- 4 Bedroom Detached
- Garage
- Utility Room
- EPC Rating: B



 4  2  3

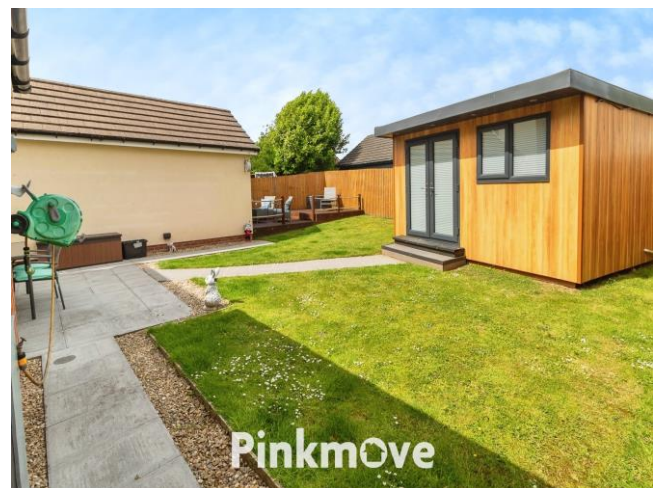
Pinkmove

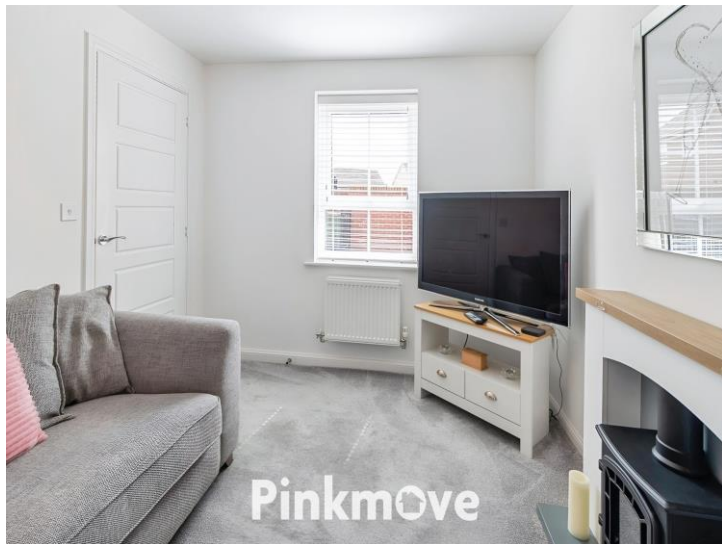
01633 746088
team@pinkmove.co.uk



About the property

A stunning detached home in a sought-after area. Features include four spacious bedrooms, three bathrooms, a bright kitchen, three reception rooms, and a utility room. Outside, there's parking for three cars, a garage, an EV charger, and a garden office.





Accommodation

Entrance Hall

Reception Room

10' 2" x 6' 9" (3.10m x 2.06m)

Dining Room

10' 1" x 6' 8" (3.07m x 2.03m)

Living Room

15' 6" x 11' 2" (4.72m x 3.40m)

Cloakroom

4' 4" x 4' 8" (1.32m x 1.42m)

Utility Room

5' 8" x 6' (1.73m x 1.83m)

Kitchen

12' 7" x 9' 6" (3.84m x 2.90m)

Max Measurements

Bedroom 1

11' x 9' 7" (3.35m x 2.92m)

En-Suite

8' x 6' 3" (2.44m x 1.91m)

Bedroom 2

12' 4" x 9' (3.76m x 2.74m)

Bedroom 3

9' 9" x 9' (2.97m x 2.74m)

Bedroom 4

10' 7" x 8' 3" (3.23m x 2.51m)

Bathroom

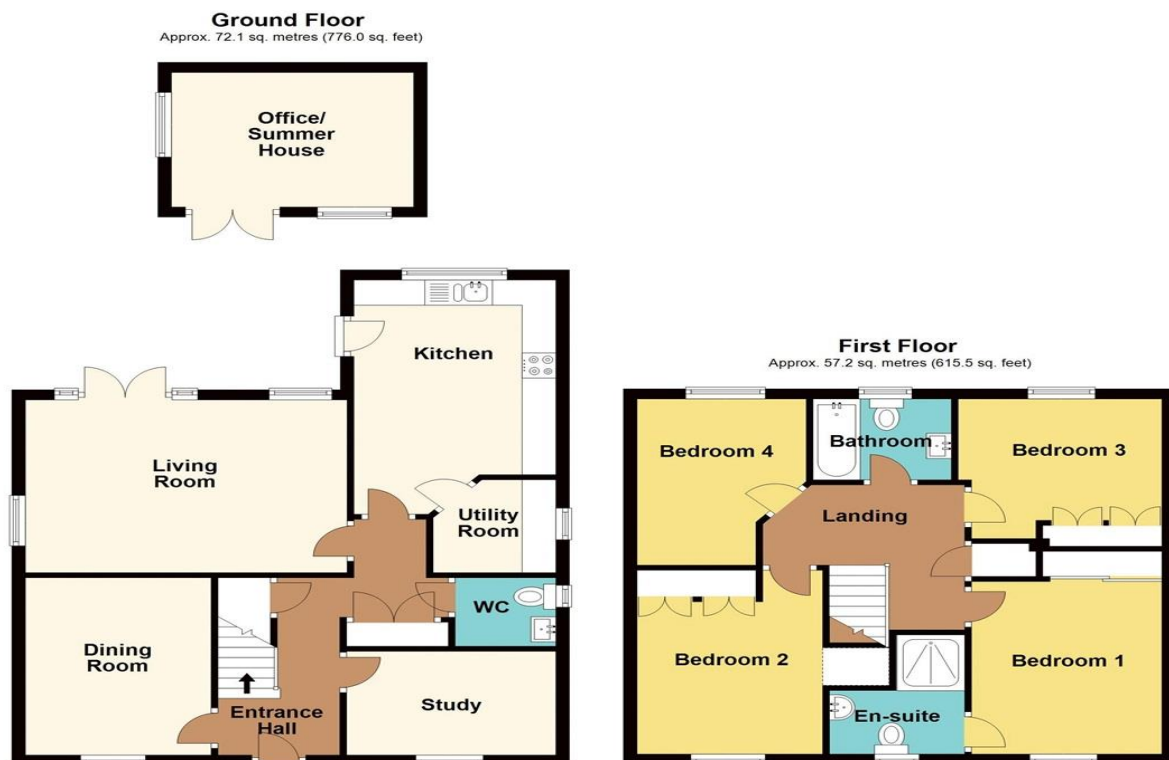
6' 8" x 5' 4" (2.03m x 1.63m)

01633 746088

team@pinkmove.co.uk

Pinkmove

Floorplan



Total area: approx. 129.3 sq. metres (1391.6 sq. feet)

Important Information

Note while we endeavour to make our sales details accurate and reliable, if there is any point which is of particular interest to you, please contact the office and we will be pleased to confirm the position for you. We have not personally tested any apparatus, equipment, fixtures, fittings or services and cannot verify they are in working order or fit for their purposes. Nothing in these particulars is intended to indicate that carpets or curtains, furnishings or fittings, electrical goods (whether wired or not). Gas fires or light fittings or any other fixtures not expressly included form part of the property offered for sale. This computer generated Floorplan, if applicable, is intended as a general guide to the layout and design of the property. It is not to scale and should not be relied upon for dimensions. Tenure: We cannot confirm the tenure of the property as we have not had access to the legal documents. The buyer is advised to obtain verification from their solicitor or surveyor.

Peter Alan Limited is registered in England and Wales under company number 2073153, Registered Office is Cumbria House, 16-20 Hockliffe Street, Leighton Buzzard, Bedfordshire, LU7 1GN. VAT Registration Number is 500 2481 05. For activities relating to regulated mortgages and non-investment insurance contracts, Peter Alan Limited is an appointed representative of Connells Limited which is authorised and regulated by the Financial Conduct Authority. Connells Limited's Financial Services Register number is 302221. Most buy-to-let

