



## Monmouth Castle offers in the region of £245,000

- No Onwards Chain
- Off Road Parking
- Rear Garden with Access
- Two Double Bedrooms
- Sought After Location
- Excellent Transport Links
- EPC Rating: B



 2  1  1

**Pinkmove**

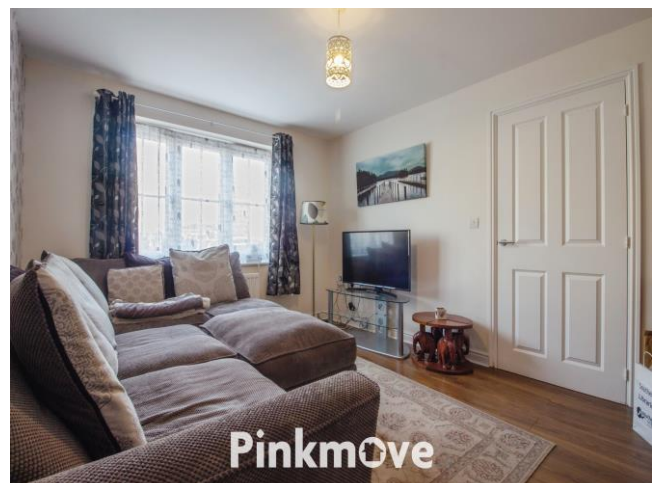
01633 746088  
team@pinkmove.co.uk



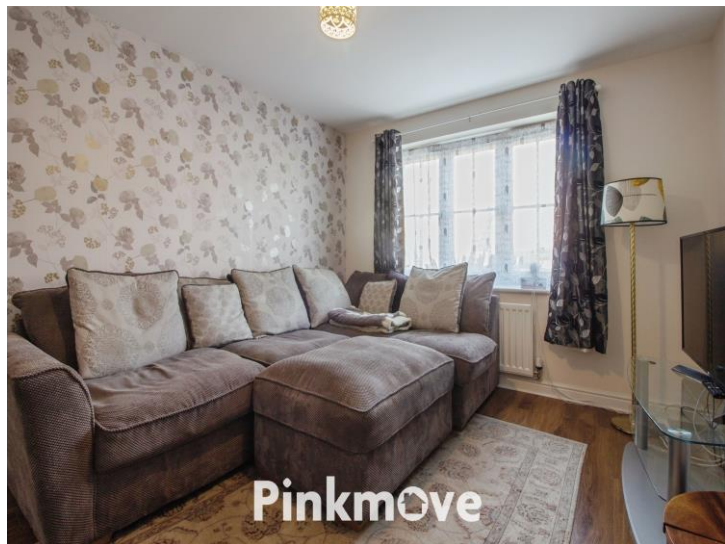


## About the property

This immaculate terraced house in the desirable Redrow Housing Estate offers modern interiors, two spacious bedrooms, a garden, off-street parking, and is conveniently located near public transport and amenities, making it ideal for families, first-time buyers, and investors.



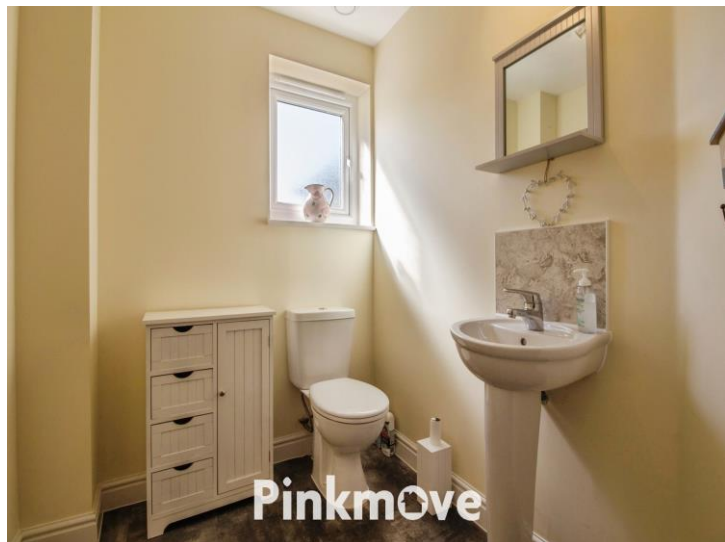




Pinkmove



Pinkmove



Pinkmove



Pinkmove

## Accommodation

### Hallway

### Living Room

12' 7" x 10' 1" ( 3.84m x 3.07m )

### Kitchen/Diner

11' 4" x 11' 4" ( 3.45m x 3.45m )

Max Measurements

### WC

6' 2" x 5' 2" ( 1.88m x 1.57m )

Max Measurements

### Landing

### Bedroom One

15' 1" x 10' ( 4.60m x 3.05m )

### Bedroom Two

9' 1" x 17' 5" ( 2.77m x 5.31m )

### Bathroom

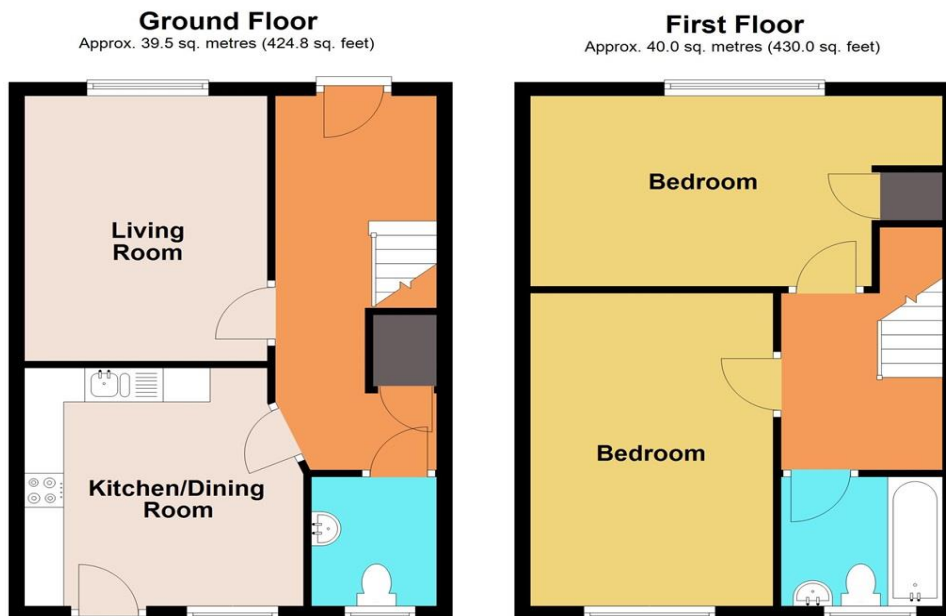
6' 3" x 7' 1" ( 1.91m x 2.16m )

01633 746088

team@pinkmove.co.uk

**Pinkmove**

## Floorplan



Total area: approx. 79.4 sq. metres (854.8 sq. feet)  
**56 Momouth Castle Drive**

## Important Information

Note while we endeavour to make our sales details accurate and reliable, if there is any point which is of particular interest to you, please contact the office and we will be pleased to confirm the position for you. We have not personally tested any apparatus, equipment, fixtures, fittings or services and cannot verify they are in working order or fit for their purposes. Nothing in these particulars is intended to indicate that carpets or curtains, furnishings or fittings, electrical goods (whether wired or not). Gas fires or light fittings or any other fixtures not expressly included form part of the property offered for sale. This computer generated Floorplan, if applicable, is intended as a general guide to the layout and design of the property. It is not to scale and should not be relied upon for dimensions. Tenure: We cannot confirm the tenure of the property as we have not had access to the legal documents. The buyer is advised to obtain verification from their solicitor or surveyor.

Peter Alan Limited is registered in England and Wales under company number 2073153, Registered Office is Cumbria House, 16-20 Hockliffe Street, Leighton Buzzard, Bedfordshire, LU7 1GN. VAT Registration Number is 500 2481 05. For activities relating to regulated mortgages and non-investment insurance contracts, Peter Alan Limited is an appointed representative of Connells Limited which is authorised and regulated by the Financial Conduct Authority. Connells Limited's Financial Services Register number is 302221. Most buy-to-let

