



## The Presbytery St. Mary

**£500,000**

- DRIVEWAY AND GARAGE
- POTENTIAL FIFTH BEDROOM
- IMMACULATE AND SPACIOUS DETACHED PROPERTY
- FOUR RECEPTION ROOMS
- FOUR BATHROOMS
- ENCLOSED REAR GARDEN
- EPC Rating: C



 4  4  4

**Pinkmove**

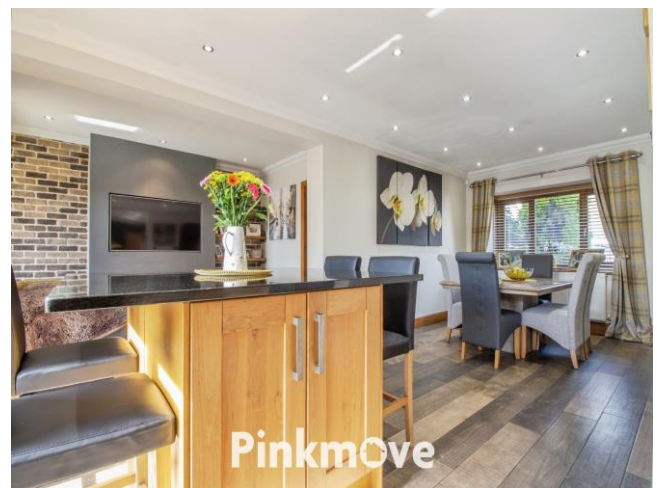
01633 746088  
team@pinkmove.co.uk





## About the property

We are excited to offer this beautifully maintained detached property for sale, presented in excellent condition. This spacious home features four double bedrooms, four reception rooms, four bathrooms, a private rear garden, and includes a driveway and garage.







## Accommodation

### Living Room

22' 4" x 11' 8" ( 6.81m x 3.56m )  
Max Measurements

### Conservatory

14' 5" x 11' 3" ( 4.39m x 3.43m )  
Max Measurements

### Kitchen

10' 1" x 10' 8" ( 3.07m x 3.25m )  
Max Measurements

### Dining Area

22' 4" x 8' 8" ( 6.81m x 2.64m )  
Max Measurements

### Lounge

12' 1" x 7' 5" ( 3.68m x 2.26m )  
Max Measurements

### Shower Room

6' 5" x 5' 5" ( 1.96m x 1.65m )  
Max Measurements

### Bedroom 1

15' 4" x 17' 9" ( 4.67m x 5.41m )  
Max Measurements

### En-Suite

5' 2" x 7' 6" ( 1.57m x 2.29m )  
Max Measurements

### Bedroom 2

10' 4" x 11' 9" ( 3.15m x 3.58m )  
Max Measurements

### Bedroom 3

10' 4" x 10' 9" ( 3.15m x 3.28m )  
Max Measurements

### Bedroom 4

11' 4" x 8' 3" ( 3.45m x 2.51m )  
Max Measurements

### Bathroom 1

7' 6" x 6' 5" ( 2.29m x 1.96m )  
Max Measurements

### Sitting Room/Potential Fifth

16' 5" x 8' 8" ( 5.00m x 2.64m )  
Max Measurements

### Bathroom 2

5' 2" x 8' 8" ( 1.57m x 2.64m )  
Max Measurements

## Floorplan



## Important Information

Note while we endeavour to make our sales details accurate and reliable, if there is any point which is of particular interest to you, please contact the office and we will be pleased to confirm the position for you. We have not personally tested any apparatus, equipment, fixtures, fittings or services and cannot verify they are in working order or fit for their purposes. Nothing in these particulars is intended to indicate that carpets or curtains, furnishings or fittings, electrical goods (whether wired or not). Gas fires or light fittings or any other fixtures not expressly included form part of the property offered for sale. This computer generated Floorplan, if applicable, is intended as a general guide to the layout and design of the property. It is not to scale and should not be relied upon for dimensions. Tenure: We cannot confirm the tenure of the property as we have not had access to the legal documents. The buyer is advised to obtain verification from their solicitor or surveyor.