



Allt-Yr-Yn Road, £390,000

- RE AVAILABLE- SPACIOUS BAY FRONTED SEMI-DETACHED PROPERTY
- CHARACTER FEATURES
- BEAUTIFULLY PRESENTED THROUGHOUT
- FOUR BEDROOMS
- THREE SPACIOUS RECEPTION ROOMS
- DOWNSTAIRS CLOAKROOM
- LOVELY SURROUNDING VIEWS
- BEAUTIFULLY MAINTAINED AND ENCLOSED, GENEROUS REAR GARDEN
- EPC Rating: D



 4
  1
  3

Pinkmove

01633 746088
team@pinkmove.co.uk



Pinkmove

About the property

This handsome and impressive double bay fronted semi-detached family home is brimming with original and character features and is incredibly well presented throughout. Inside this spacious family home, you will find three warm and welcoming reception rooms, two of which have bay windows, which allows natural light to flood through. The principal living room offers an open and inviting atmosphere with high ceilings, character-moulded coving, a bay fronted window and a character feature fireplace. The dining room showcases charming character features with a Victorian style fireplace and wooden flooring creating an inviting space for gathering and entertaining. With doors opening out on to the beautifully manicured garden it also offers itself to summer dining and entertaining. The well-equipped kitchen is the heart of the home, which also overlooks the rear garden and is complimented by an additional breakfast room. To the first floor the second bedroom, which benefits from built in wardrobes, and third bedroom which benefits from a bay window are comfortable doubles. The master bedroom, complete with built in wardrobes is a spacious retreat, enhanced by a beautiful bay window. The fourth is a cosy single room, perfect for a child or as a home office. The family bathroom, complete with vanity storage, serves as the perfect finishing touch to the first-floor accommodation. The property also benefits from a downstairs cloakroom and large, beautiful rear garden.



Pinkmove



Pinkmove



Accommodation

Hall

Living Room

12' 7" x 14' 4" (3.84m x 4.37m)
Max Measurements

Dining Room

13' 8" x 12' 5" (4.17m x 3.78m)
Max Measurements

Breakfast Room

8' 9" x 8' 9" (2.67m x 2.67m)
Max Measurements

Kitchen

11' 2" x 9' 9" (3.40m x 2.97m)
Max Measurements

Cloakroom

3' 9" x 2' 6" (1.14m x 0.76m)
Max Measurements

Landing

Bedroom 1

12' 7" x 13' 2" (3.84m x 4.01m)
Max Measurements

Bedroom 2

13' 8" x 12' 5" (4.17m x 3.78m)
Max Measurements

Bedroom 3

11' 2" x 10' 2" (3.40m x 3.10m)
Max Measurements

Bedroom 4

7' 7" x 6' 9" (2.31m x 2.06m)
Max Measurements

Bathroom

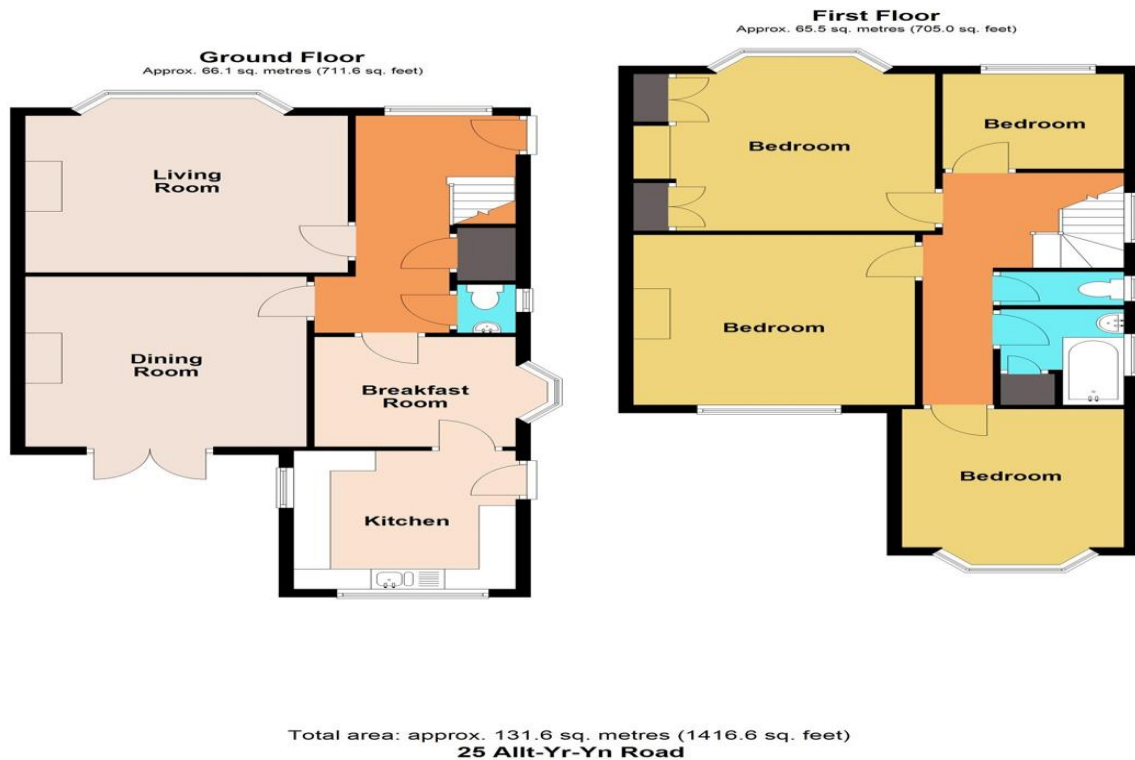
7' 8" x 5' 5" (2.34m x 1.65m)
Max Measurements

01633 746088

team@pinkmove.co.uk

Pinkmove

Floorplan



Under the terms of the Estate Agency Act 1979 (Section 21), please note that the vendor is an Employee of the Connells Group of companies.

Important Information

Note while we endeavour to make our sales details accurate and reliable, if there is any point which is of particular interest to you, please contact the office and we will be pleased to confirm the position for you. We have not personally tested any apparatus, equipment, fixtures, fittings or services and cannot verify they are in working order or fit for their purposes. Nothing in these particulars is intended to indicate that carpets or curtains, furnishings or fittings, electrical goods (whether wired or not). Gas fires or light fittings or any other fixtures not expressly included form part of the property offered for sale. This computer generated Floorplan, if applicable, is intended as a general guide to the layout and design of the property. It is not to scale and should not be relied upon for dimensions. Tenure: We cannot confirm the tenure of the property as we have not had access to the legal documents. The buyer is advised to obtain verification from their solicitor or surveyor.

Peter Alan Limited is registered in England and Wales under company number 2073153, Registered Office is Cumbria House, 16-20 Hockliffe Street, Leighton Buzzard, Bedfordshire, LU7 1GN. VAT Registration Number is 500 2481 05. For activities relating to regulated mortgages and non-investment insurance contracts, Peter Alan Limited is an appointed representative of Connells Limited which is authorised and regulated by the Financial Conduct Authority. Connells Limited's Financial Services Register number is 302221. Most buy-to-let

