



Park Farm Cottage, Ponthir Road Offers in the region of £325,000

- NO CHAIN
- DETACHED PROPERTY WITH LOTS OF POTENTIAL
- TWO RECEPTION ROOMS
- CONSERVATORY
- BEAUTIFUL SURROUNDING VIEWS
- LARGE REAR GARDEN
- AMPLE PARKING
- DOUBLE GARAGE



 2  1  2



About the property

Welcome to this delightful, detached house eager for your creative vision. Currently for sale with no chain, it may need some attention but is rich in potential, ready to be turned into your dream home. Positioned in a desirable area with lovely views, this residence presents excellent possibilities.





Accommodation

Living Room

12' 4" x 14' 3" (3.76m x 4.34m)

Dining Room

9' 1" x 11' 3" (2.77m x 3.43m)

Kitchen

26' 2" x 11' 9" (7.98m x 3.58m)

Cloakroom

7' x 5' 6" (2.13m x 1.68m)

Conservatory

10' 1" x 16' 4" (3.07m x 4.98m)

Bedroom 1

12' 4" x 14' 2" (3.76m x 4.32m)

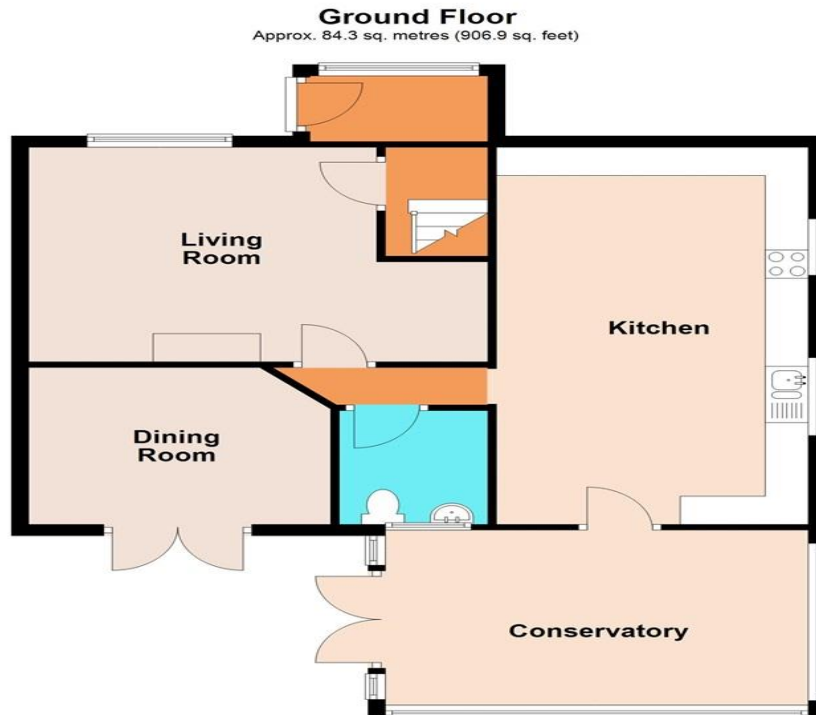
Bedroom 2

9' 1" x 8' 6" (2.77m x 2.59m)

Bathroom

7' 2" x 8' 3" (2.18m x 2.51m)

Floorplan



Total area: approx. 120.4 sq. metres (1295.8 sq. feet)
Park Farm Cottage

Important Information

Note while we endeavour to make our sales details accurate and reliable, if there is any point which is of particular interest to you, please contact the office and we will be pleased to confirm the position for you. We have not personally tested any apparatus, equipment, fixtures, fittings or services and cannot verify they are in working order or fit for their purposes. Nothing in these particulars is intended to indicate that carpets or curtains, furnishings or fittings, electrical goods (whether wired or not). Gas fires or light fittings or any other fixtures not expressly included form part of the property offered for sale. This computer generated Floorplan, if applicable, is intended as a general guide to the layout and design of the property. It is not to scale and should not be relied upon for dimensions. Tenure: We cannot confirm the tenure of the property as we have not had access to the legal documents. The buyer is advised to obtain verification from their solicitor or surveyor.

Peter Alan Limited is registered in England and Wales under company number 2073153, Registered Office is Cumbria House, 16-20 Hockliffe Street, Leighton Buzzard, Bedfordshire, LU7 1GN. VAT Registration Number is 500 2481 05. For activities relating to regulated mortgages and non-investment insurance contracts, Peter Alan Limited is an appointed representative of Connells Limited which is authorised and regulated by the Financial Conduct Authority. Connells Limited's Financial Services Register number is 302221. Most buy-to-let