



Pinkmove

Monet Crescent, guide price £170,000

- THREE BEDROOMS
- LOUNGE/DINER
- MODERN KITCHEN
- BATHROOM
- LARGE REAR GARDENS
- PARKING TO REAR
- PRIME LOCATION
- EPC Rating: D



3 1 1

Pinkmove

01633 746088
team@pinkmove.co.uk



About the property

Located on the charming Monet Crescent in Newport, this three-bedroom family home boasts a variety of unique features that make it an ideal purchase for families and couples alike.

The property comprises three well-appointed bedrooms, two of which are double-sized and one single, offering ample space for a growing family or for hosting guests. Each room is tastefully decorated, reflecting the overall good condition of the property.

At the heart of this beautiful home lies a modern kitchen, fully equipped to cater to your culinary needs. It is sure to inspire the chef in you, whether you're preparing a simple meal for two or entertaining a crowd.

The property also features an open-plan reception room which doubles as a lounge and diner. This space is perfect for family gatherings and dinner parties, offering a warm and inviting atmosphere for relaxation and entertainment.

One of the highlights of this property is the large rear garden. The rear garden also enjoys gated access for secure off-road parking, a unique feature that adds significant value to this property.

Accommodation

Hallway

Lounge/Diner

20' 1" x 13' 7" (6.12m x 4.14m)

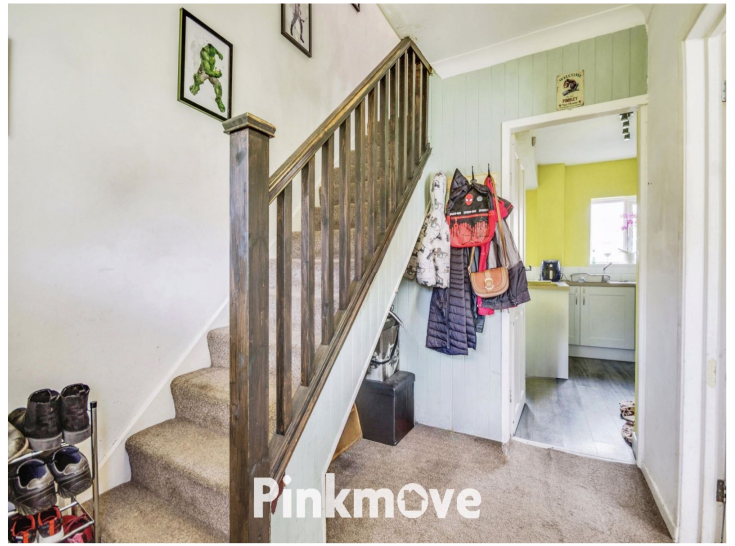
Kitchen

11' 8" x 10' 3" (3.56m x 3.12m)

Landing

Bedroom One

11' 4" x 10' 10" (3.45m x 3.30m)



Bedroom Two

12' 6" x 7' 11" (3.81m x 2.41m)

Bedroom Three

9' 11" x 6' 6" (3.02m x 1.98m)

Bathroom

8' 1" x 5' (2.46m x 1.52m)

01633 746088

team@pinkmove.co.uk

Pinkmove

Floorplan



Important Information

Note while we endeavour to make our sales details accurate and reliable, if there is any point which is of particular interest to you, please contact the office and we will be pleased to confirm the position for you. We have not personally tested any apparatus, equipment, fixtures, fittings or services and cannot verify they are in working order or fit for their purposes. Nothing in these particulars is intended to indicate that carpets or curtains, furnishings or fittings, electrical goods (whether wired or not). Gas fires or light fittings or any other fixtures not expressly included form part of the property offered for sale. This computer generated Floorplan, if applicable, is intended as a general guide to the layout and design of the property. It is not to scale and should not be relied upon for dimensions. Tenure: We cannot confirm the tenure of the property as we have not had access to the legal documents. The buyer is advised to obtain verification from their solicitor or surveyor.

Peter Alan Limited is registered in England and Wales under company number 2073153, Registered Office is Cumbria House, 16-20 Hockliffe Street, Leighton Buzzard, Bedfordshire, LU7 1GN. VAT Registration Number is 500 2481 05. For activities relating to regulated mortgages and non-investment insurance contracts, Peter Alan Limited is an appointed representative of Connells Limited which is authorised and regulated by the Financial Conduct Authority. Connells Limited's Financial Services Register number is 302221. Most buy-to-let

