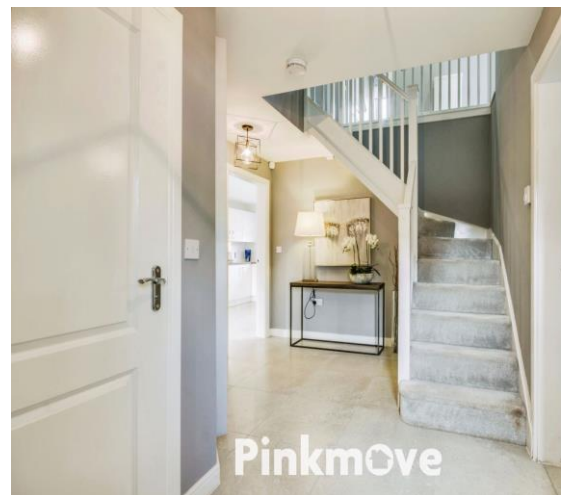




## Jubilee Way

### Guide price £440,000

- Guide Price £440,000 TO £450,000
- SPACIOUS DETACHED FAMILY HOME
- FOUR DOUBLE BEDROOMS
- PRIMARY EN-SUITE AND FAMILY BATHROOM
- LIVING ROOM
- KITCHEN/DINER
- UTILITY AND CLOAKROOM
- AMPLE OFF ROAD PARKING AND



 4  2  2

**Pinkmove**

01633 746088  
team@pinkmove.co.uk



## About the property

Presenting an immaculate, detached property for sale, ideally suited for families. This splendid home offers an abundance of space and is located on the desirable Jubilee Way in Rogerstone.





## Accommodation

### Living Room

19' 9" x 10' 11" ( 6.02m x 3.33m )

### Kitchen / Diner

13' 10" x 18' 9" ( 4.22m x 5.71m )

Max Measurements

### Utility Room

5' 7" x 6' 5" ( 1.70m x 1.96m )

### Cloakroom

7' 1" x 3' 10" ( 2.16m x 1.17m )

### Bedroom One

10' 4" x 11' 2" ( 3.15m x 3.40m )

### Ensuite

12' 2" x 4' 6" ( 3.71m x 1.37m )

### Bedroom Two

10' 2" x 9' 6" ( 3.10m x 2.90m )

### Bedroom Three

7' 1" x 11' ( 2.16m x 3.35m )

### Bathroom

9' 3" x 11' 11" ( 2.82m x 3.63m )

## Floorplan



## Important Information

Note while we endeavour to make our sales details accurate and reliable, if there is any point which is of particular interest to you, please contact the office and we will be pleased to confirm the position for you. We have not personally tested any apparatus, equipment, fixtures, fittings or services and cannot verify they are in working order or fit for their purposes. Nothing in these particulars is intended to indicate that carpets or curtains, furnishings or fittings, electrical goods (whether wired or not). Gas fires or light fittings or any other fixtures not expressly included form part of the property offered for sale. This computer generated Floorplan, if applicable, is intended as a general guide to the layout and design of the property. It is not to scale and should not be relied upon for dimensions. Tenure: We cannot confirm the tenure of the property as we have not had access to the legal documents. The buyer is advised to obtain verification from their solicitor or surveyor.