



Stavely Way
Gamston Nottingham



Stavely Way Gamston Nottingham NG2 6QR

for sale
£180,000



Property Description

The property features two well-proportioned bedrooms, including a master bedroom with en-suite shower room, plus a modern family bathroom. The heart of the home is the open-plan lounge and kitchen, providing a bright and inviting space ideal for both relaxing and entertaining.

Further benefits include allocated parking, secure entry access, and well-maintained communal areas.

Perfect for first-time buyers, downsizers, or investors alike, this superb apartment offers a convenient lifestyle close to local shops, schools, and excellent transport links into West Bridgford and Nottingham city centre.

Communal Entrance

Accessed via secure door leading to the entrance door.

Entrance Hallway

Having a radiator and storage cupboards.

Lounge

Having a radiator, window to the rear and being open with the kitchen.

Kitchen

Having wall and base units with work surfaces over, window to the side, boiler, integrated fridge freezer, gas hob, electric oven, extractor, spot light, space and plumbing for washing machine and space for dishwasher.

Bedroom One

Having window to the rear, a radiator and built-in wardrobes.

En Suite

Having mains fed shower, pedestal wash hand basin, low level W.C, a radiator, spot lights and extractor.

Bedroom Two

Having window to the rear elevation and a radiator.

Bathroom

Having a bath with mains fed shower over, pedestal wash hand basin and low level W.C, spot lights, extractor and a radiator.

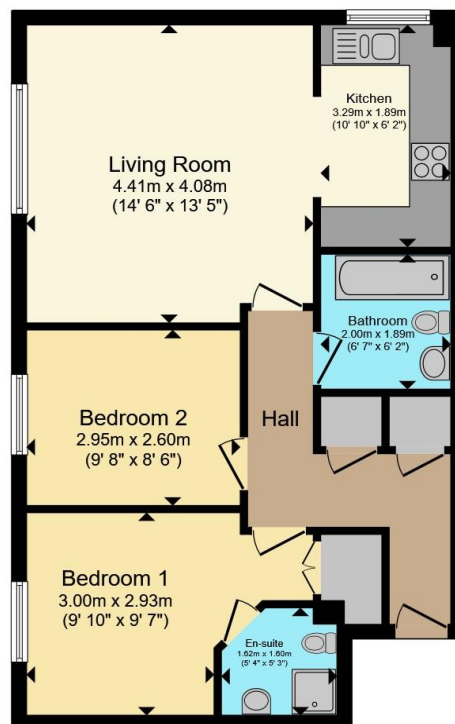
Outside

Externally there is one allocated parking space.









Total floor area 60.6 m² (652 sq.ft.) approx

This floor plan is for illustrative purposes only. It is not drawn to scale. Any measurements, floor areas (including any total floor area), openings and orientation are approximate. No details are guaranteed, they cannot be relied upon for any purpose and they do not form part of any agreement. No liability is taken for any error, omission or misstatement. A party must rely upon its own inspection(s). Powered by www.propertybox.io



To view this property please contact Burchell Edwards on

T 0115 968 0528
E hucknall@burchelledwards.co.uk

64 High Street Hucknall
 NOTTINGHAM NG15 7AX

EPC Rating: C

Service Charge: Ask
 Agent

Ground Rent:
 Ask Agent

Tenure: Leasehold

check out more properties at burchelledwards.co.uk

This is a Leasehold property. We are awaiting further details about the Term of the lease. For further information please contact the branch. Please note additional fees could be incurred for items such as Leasehold packs.



1. MONEY LAUNDERING REGULATIONS Intending purchasers will be asked to produce identification documentation at a later stage and we would ask for your co-operation in order that there will be no delay in agreeing the sale. 2. These particulars do not constitute part or all of an offer or contract. 3. The measurements indicated are supplied for guidance only and as such must be considered incorrect. Potential buyers are advised to recheck measurements before committing to any expense. 4. We have not tested any apparatus, equipment, fixtures, fittings or services and it is in the buyers interest to check the working condition of any appliances.

Burchell Edwards is a trading name of Connells Residential which is registered in England and Wales under company number 1489613, Registered Office is Cumbria House, 16-20 Hockliffe Street, Leighton Buzzard, Bedfordshire, LU7 1GN. VAT Registration Number is 500 2481 05.

See all our properties at www.burchelledwards.co.uk | www.rightmove.co.uk | www.zoopla.co.uk

Property Ref: HUK104772 - 0001