



Hillcrest Drive
Hucknall Nottingham





Property Description

This well presented semi-detached home sits on a generous plot with driveway providing off road parking and rear garden with lawn, paved and decked patio areas and pond.

The property offers entrance hallway, lounge with multi fuel burner, kitchen and utility area with downstairs WC. To the first floor there are two double bedrooms and family bathroom.

Located close to schools, bus links and local amenities the property must be viewed to be fully appreciated - Call BURCHELL EDWARDS 0115 968 0528

Entrance Hallway

Accessed via composite side door with stairs to the first floor and door leading into the lounge.

Lounge

12' 10" x 11' 11" (3.91m x 3.63m)

Having window to the front elevation, feature fireplace with inset multi-fuel burner, central heating radiator and door into kitchen

Kitchen

9' 1" x 10' 2" (2.77m x 3.10m)

Fitted with a range of wall, base and drawer units with complimentary worksurface over, inset one and a half bowl sink and drainer, tiled splashbacks, space and plumbing for washing machine, space for cooker and an chimney style extractor hood over, breakfast bar, upvc double glazed window to the rear elevation and access into utility area

Utility Area

Having a central heating radiator, UPVC door to the rear and door to W.C

W.C

Having central heating radiator, obscured window to the rear, low level W.C. and splashback wall covering

First Floor Landing

Having window to the side elevation and loft access.

Bedroom One

12' 10" x 10' 4" (3.91m x 3.15m)

Having built in cupboard housing the central heating boiler, upvc double glazed window to the front elevation and central heating radiator.

Bedroom Two

10' 11" x 9' 5" (3.33m x 2.87m)

Having upvc double glazed window to the rear elevation and central heating radiator.

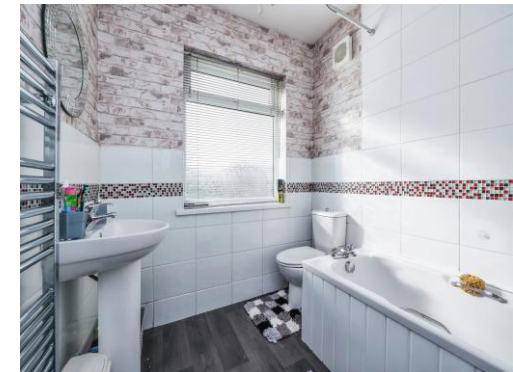
Bathroom

Fitted with a three piece suite comprising of panelled bath with mains fed shower over, low level W.C, and pedestal wash hand basin, tiled splashbacks, heated towel rail, extractor fan and upvc double glazed obscured window to the rear elevation.

Outside

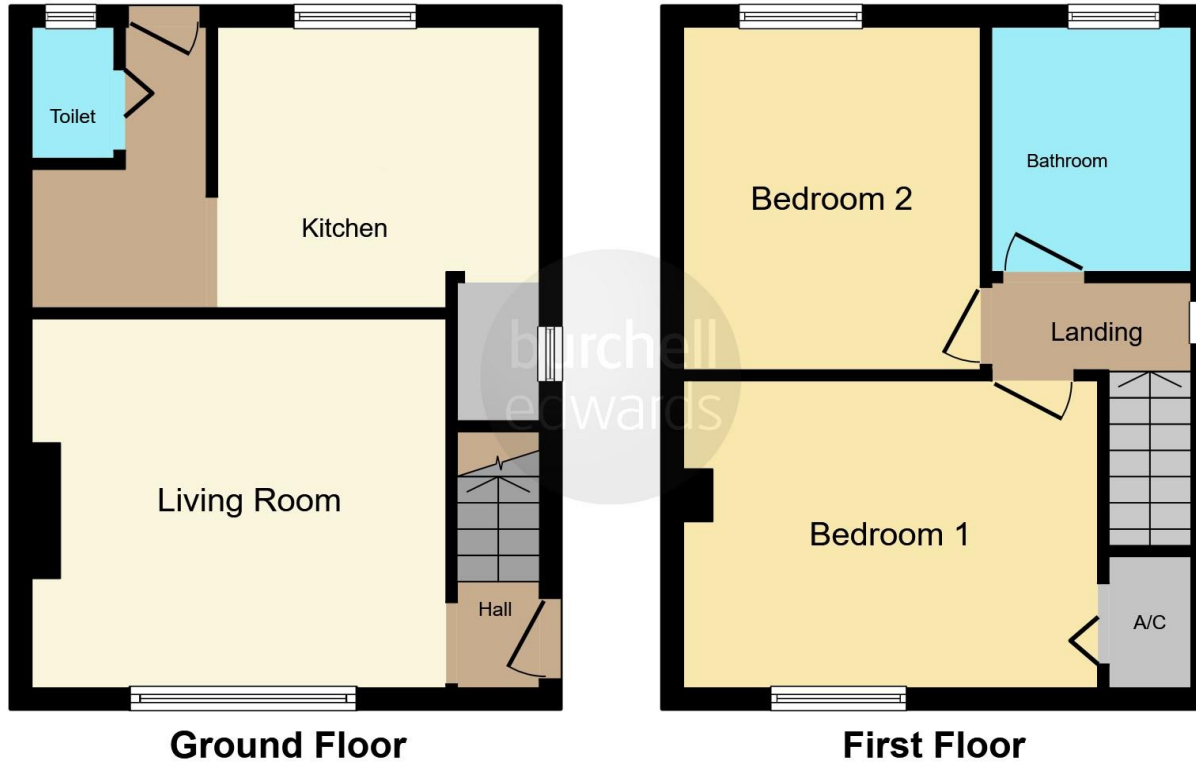
The front of the property is blocked paved providing off road parking and path with side gate leading to the rear garden.

The generous enclosed rear garden is mainly laid to lawn with paved patio area, purpose built covered pond with power and connections, further decked seating area, path, wood store, garden shed and fenced boundaries.









This floor plan is for illustrative purposes only. It is not drawn to scale. Any measurements, floor areas (including any total floor area), openings and orientation are approximate. No details are guaranteed, they cannot be relied upon for any purpose and they do not form part of any agreement. No liability is taken for any error, omission or misstatement. A party must rely upon its own inspection(s). Powered by www.focalagent.com

To view this property please contact Burchell Edwards on

T 0115 968 0528
E hucknall@burchelledwards.co.uk

64 High Street Hucknall
 NOTTINGHAM NG15 7AX

EPC Rating: D

Tenure: Freehold

check out more properties at burchelledwards.co.uk



1. MONEY LAUNDERING REGULATIONS Intending purchasers will be asked to produce identification documentation at a later stage and we would ask for your co-operation in order that there will be no delay in agreeing the sale. 2. These particulars do not constitute part or all of an offer or contract. 3. The measurements indicated are supplied for guidance only and as such must be considered incorrect. Potential buyers are advised to recheck measurements before committing to any expense. 4. We have not tested any apparatus, equipment, fixtures, fittings or services and it is in the buyers interest to check the working condition of any appliances.

Burchell Edwards is a trading name of Connells Residential which is registered in England and Wales under company number 1489613, Registered Office is Cumbria House, 16-20 Hockliffe Street, Leighton Buzzard, Bedfordshire, LU7 1GN. VAT Registration Number is 500 2481 05.

See all our properties at www.burchelledwards.co.uk | www.rightmove.co.uk | www.zoopla.co.uk

Property Ref: HUK103023 - 0001