



Oxford Street
Kirkby-In-Ashfield Nottingham



Oxford Street Kirkby-In-Ashfield Nottingham NG17 7ED

for sale offers over
£150,000



Property Description

Located with easy access to Kirkby town centre, this traditional style semi detached home has lots of original features and character.

The accommodation comprises of Hallway, Spacious Lounge with bay window, Dining Room, Kitchen & Utility which has French doors leading out to the enclosed rear garden. On the first floor there are two spacious bedrooms and bathroom with four piece suite.

Outside there is an enclosed rear garden and two brick outbuildings.

Hall

Accessed via door to the side elevation with stairs off to the first floor and doors off to the lounge and dining room.

Lounge

13' 7" x 12' 4" (4.14m x 3.76m)

Having a bay window to the front elevation, a radiator and laminate flooring.

Dining Room

12' 3" x 12' 4" (3.73m x 3.76m)

Having a radiator, original cast iron fireplace, window to the rear and side elevations and understairs storage cupboard.

Kitchen

6' 9" x 10' (2.06m x 3.05m)

Having a range of matching wall and base units with work surfaces over, inset gas hob and electric oven, window to the side elevation, plumbing and space for washing machine, space for fridge, tiled flooring and open arch to a utility area.

Utility Area

8' x 7' 3" (2.44m x 2.21m)

Having a wall mounted boiler, tile flooring and double doors leading out to the rear garden.

First Floor Landing

Having loft access, a radiator and doors off to the bedrooms and bathroom.

Bedroom One

12' 4" x 11' 6" (3.76m x 3.51m)

Having window to the front elevation, wooden flooring and a radiator.

Bedroom Two

12' 4" x 9' 4" (3.76m x 2.84m)

Having wooden flooring, a wardrobe, window to the rear elevation and a radiator.

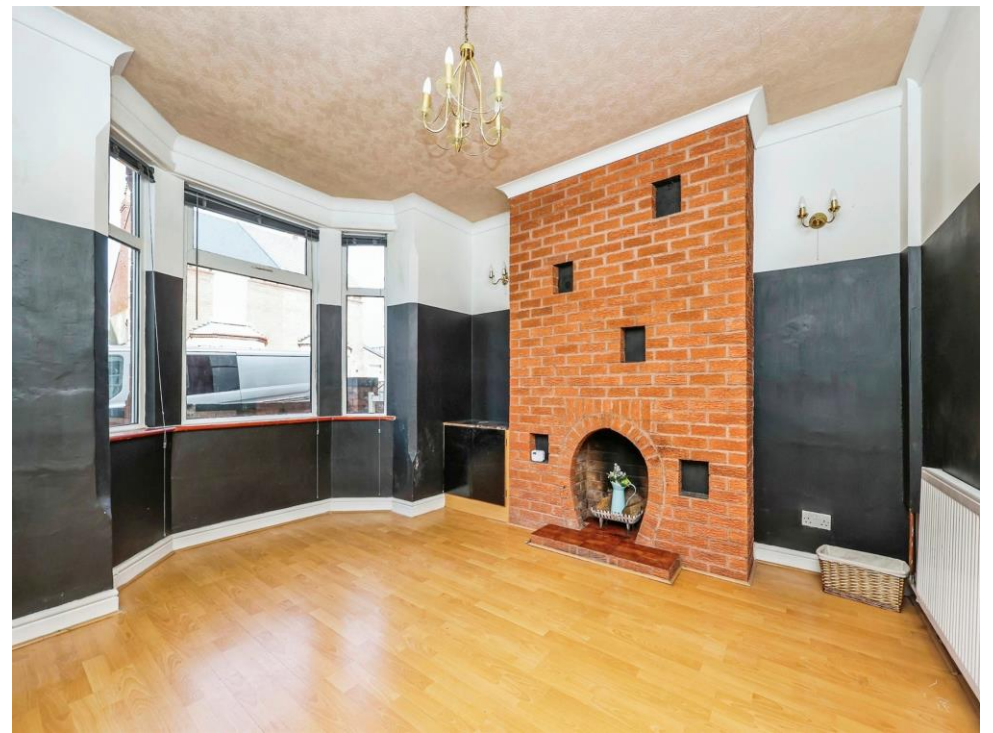
Bathroom

Having a corner sunken bath, a shower, window to the rear elevation, pedestal wash hand basin, a radiator and low level W.C.

Outside

To the rear the garden is mainly laid to lawn, an outside tap, stepping stones leading to two brick outbuildings, flower borders and concrete seating area.









This floor plan is for illustrative purposes only. It is not drawn to scale. Any measurements, floor areas (including any total floor area), openings and orientation are approximate. No details are guaranteed, they cannot be relied upon for any purpose and they do not form part of any agreement. No liability is taken for any error, omission or misstatement. A party must rely upon its own inspection(s). Powered by www.focalagent.com

To view this property please contact Burchell Edwards on

T 0115 968 0528
E hucknall@burchelledwards.co.uk

64 High Street Hucknall
 NOTTINGHAM NG15 7AX

EPC Rating: E

Tenure: Freehold

view this property online burchelledwards.co.uk/Property/HUK103834



1. MONEY LAUNDERING REGULATIONS Intending purchasers will be asked to produce identification documentation at a later stage and we would ask for your co-operation in order that there will be no delay in agreeing the sale. 2. These particulars do not constitute part or all of an offer or contract. 3. The measurements indicated are supplied for guidance only and as such must be considered incorrect. Potential buyers are advised to recheck measurements before committing to any expense. 4. We have not tested any apparatus, equipment, fixtures, fittings or services and it is in the buyers interest to check the working condition of any appliances.

Burchell Edwards is a trading name of Connells Residential which is registered in England and Wales under company number 1489613, Registered Office is Cumbria House, 16-20 Hockliffe Street, Leighton Buzzard, Bedfordshire, LU7 1GN. VAT Registration Number is 500 2481 05.

See all our properties at www.burchelledwards.co.uk | www.rightmove.co.uk | www.zoopla.co.uk

Property Ref: HUK103834 - 0002