



7 Common Road, Claygate

£1,195,000 Freehold

Four Well Proportioned Bedrooms • Detached Home • Driveway, Garage & Car Port • Beautifully Arranged Rear Garden • Well Maintained Throughout • EPC Rating - TBC • Two Reception Rooms & Study

newton
huxley.

Common Road, Claygate, Esher
Total Area: 180.3 m² ... 1941 ft² (excluding carport)

FOR ILLUSTRATIVE PURPOSES ONLY.

Whilst every attempt has been made to ensure the accuracy of the floor plan shown, all measurements, positioning, fixtures, features, fittings and any other data shown are an approximate interpretation for illustrative purposes only and are not to scale.

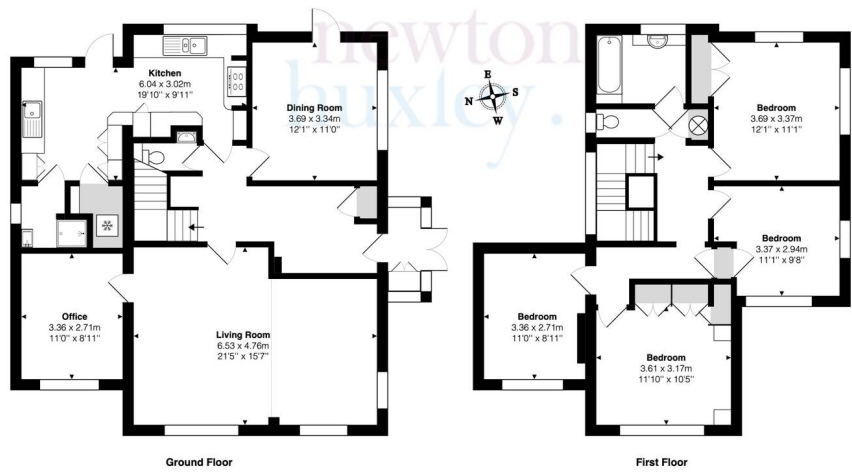
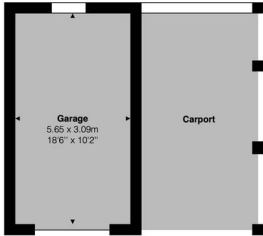
No responsibility is taken for any error, omission, mis-statement or use of data shown.

The above statement applies to both Still Moving London LTD and the Company or individual displaying this floor plan.

Unauthorised reproduction prohibited.

Å&S Still Moving London LTD (www.stillmoving.london)

**newton
huxley.**



Ground Floor

First Floor