



Flat 51a, Kingfisher Court Bridge Road, East Molesey
East Molesey

Offers Over **£425,000**

newton
huxley.

Flat 51a

Kingfisher Court Bridge Road, East Molesey

Kingfisher Court, an Art Deco gem from the 1930s, offers a fully refurbished two-bedroom apartment with modern amenities, a central location near Hampton Court Village, exclusive community features including a pool and tennis courts, and secure gated entry, making it an inviting and convenient home.

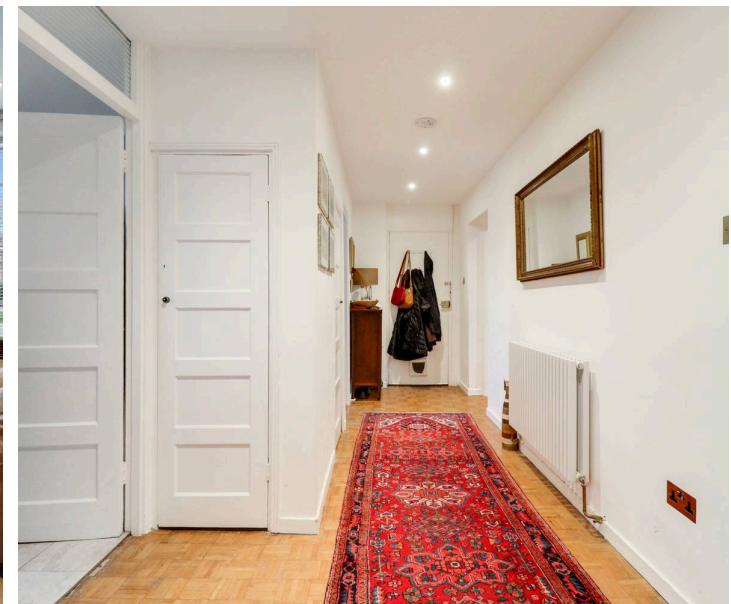
Council Tax band: TBD

Tenure: Leasehold

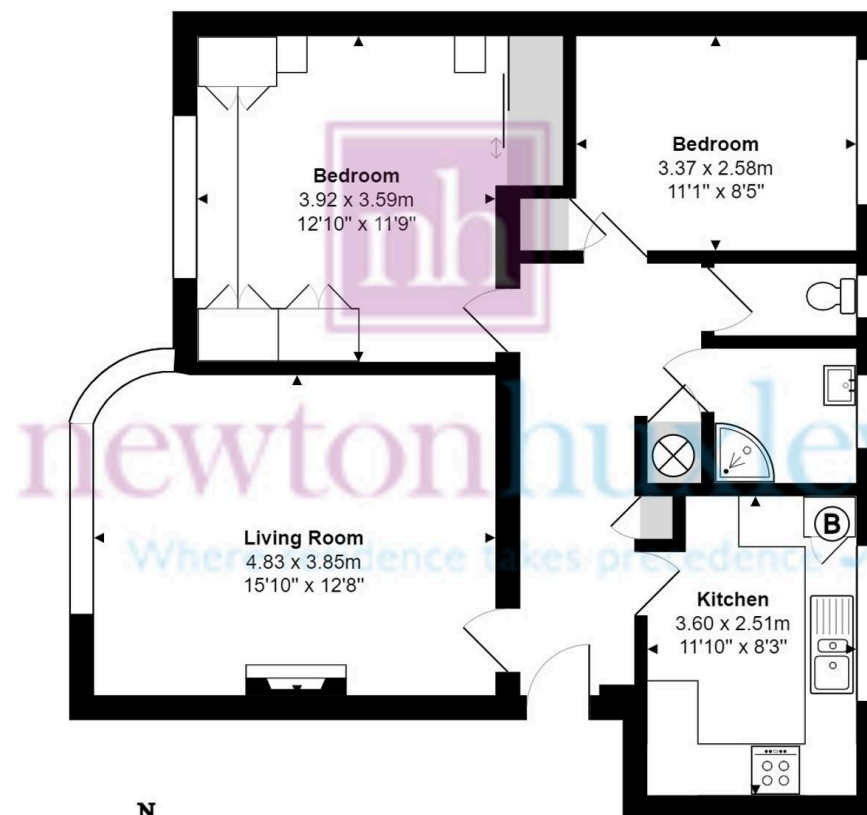
EPC Energy Efficiency Rating: E

EPC Environmental Impact Rating: E

- Moments From Hampton Court Village & Station
- Ground Floor Apartment
- Fully Refurbished
- Spacious lounge/ diner
- Views of the River Mole
- Allocated Parking Space
- Gated Development
- Beautifully maintained communal gardens
- Swimming Pool







Ground Floor Flat

Kingfisher Court, Bridge Road, East Molesey

Total Area: 70.5 m² ... 759 ft²

FOR ILLUSTRATIVE PURPOSES ONLY.

Whilst every attempt has been made to ensure the accuracy of the floor plan shown, all measurements, positioning, fixtures, features, fittings and any other data shown are an approximate interpretation for illustrative purposes only and are not to scale.

No responsibility is taken for any error, omission, miss-statement or use of data shown.

The above statement applies to both 'Still Moving London LTD' and the Company or individual displaying this floor plan.

Unauthorised reproduction prohibited.

© Still Moving London LTD (www.stillmoving.london)



newton
huxley.

