



**£1,400 PCM**    *Unfurnished*

\*\* AVAILABLE NOW \*\*

This well presented, extremely large two bedroom ground floor apartment is situated just a short walk of Prestwood Village that has an array of different shops. This property provides good transport links into London via the Great Missenden train station so would be ideal for those who commute on a daily basis in to and out of London. The accommodation includes; large living room with fireplace, separate kitchen, contemporary family bathroom, guest cloakroom and two double bedrooms, the master bedroom has built in wardrobes. The property further benefits from; off street parking, gas central heating, private garage, scenic woodland walks.

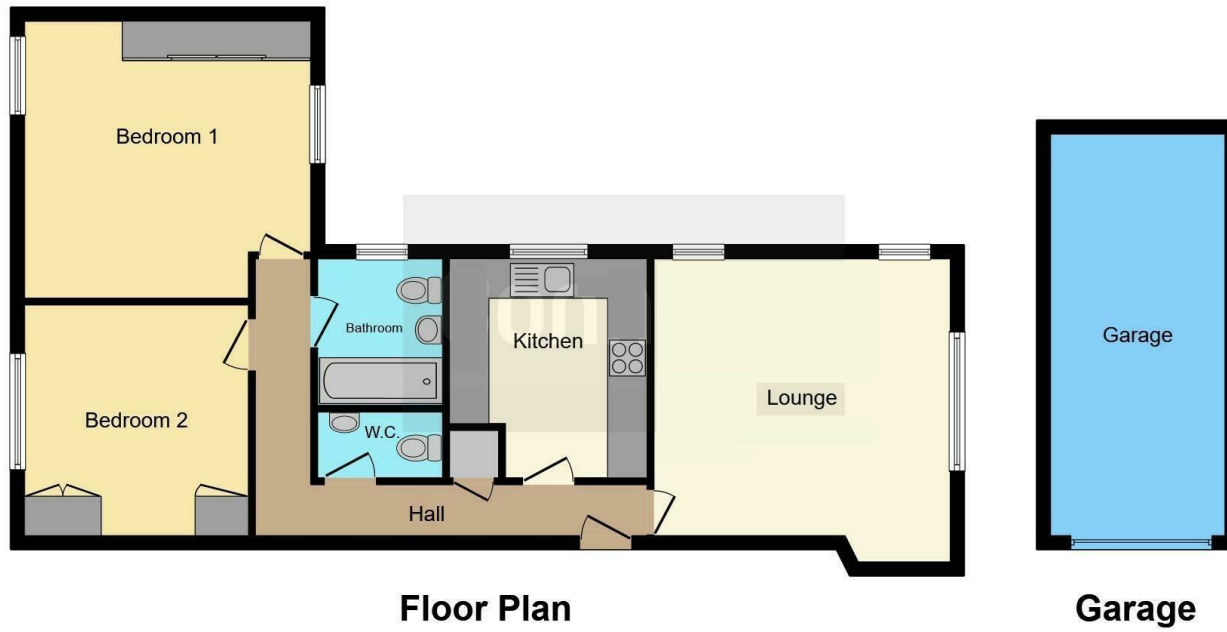
HOLDING FEE: £323

- TWO LARGE BEDROOMS
- AVAILABLE NOW
- GARAGE & PARKING
- PERIOD PROPERTY
- SCENIC WALKS
- FIREPLACE IN LOUNGE
- VILLAGE LOCATION
- GAS CENTRAL HEATING
- GUEST CLOAKROOM
- CLOSE TO SHOPS



**4 Prestwood Park House, 138 Wycombe Road, Prestwood, Bucks, HP16**

Estate Agents ~ Lettings Agents ~ Valuers ~ Independent Mortgage Advisors



This floorplan is for illustrative purposes only and is not drawn to scale. Measurements, floor-areas, openings and orientations are approximate. They should not be relied upon for any purpose and do not form any part of an agreement. No liability is taken for any error or mis-statement. All parties must rely on their own inspections.

