





Large Impressive detached family home in a non estate position in the popular area of Red Lodge. Incredibly spacious and finished to the highest standard with impressive galleried landing. The property comprises kitchen, utility, living room, dining room, four bedrooms, ensuite plus the family bathroom. Externally there is a private driveway with garage, fully enclosed rear garden with shed.

Tenure: Freehold

Council Tax Band: E

EPC: C

Property Type : Detached

Property Construction: Brick and tile

Number & Types of Room: Please refer to the floorplan

Square Footage: 1606

Parking: Garage & Driveway

Electric Supply: Mains

Heating: Oil

Water Supply: Mains

Sewerage: Mains

Broadband Connected: Yes

Rights of Way – None that the vendor is aware of  
Listed – N/A

Conservation Area – No

#### HALLWAY

Laminate flooring, stairs to first floor, under stairs cupboard.

#### KITCHEN

Tiled flooring, white shaker style base and wall units, kitchen island, quartz work surface, double oven, ceramic hob with extractor over, integrated dishwasher, space for American size fridge/freezer, stainless steel



sink with mixer tap, window to front.

#### UTILITY ROOM

Tiled flooring, shaker style base and wall units, granite effect work surface, space for washing machine and dryer, door to garden.

#### LIVING ROOM

Carpet flooring, window to side.

#### DINING ROOM

Carpet flooring, vaulted ceiling, french doors to side and rear.

#### CLOAKROOM

Laminate flooring, pedestal sink, tiled splash back, toilet.

#### BEDROOM 4/ STUDY

Carpet flooring, window to rear.

#### LANDING

Carpet flooring, vaulted ceiling.

#### MASTER BEDROOM

Carpet flooring, built in wardrobes window to front, ensuite.

#### ENSUITE

Vinyl flooring, double shower, toilet, sink, tiled splash back, heated towel rail, velux windows.

#### BATHROOM

Laminate flooring, shower, corner bath, tiled splash back, velux windows.



#### BEDROOM 2

Carpet flooring, window to rear.

#### BEDROOM 3

Carpet flooring, window to rear.

#### OUTSIDE

Front: Single garage with ample parking, mature shrubs.

Rear: Patio area, lawn, shed, electric points.





**Henleys**  
Independent Estate Agent



**Henleys**  
Independent Estate Agent



**Henleys**  
Independent Estate Agent



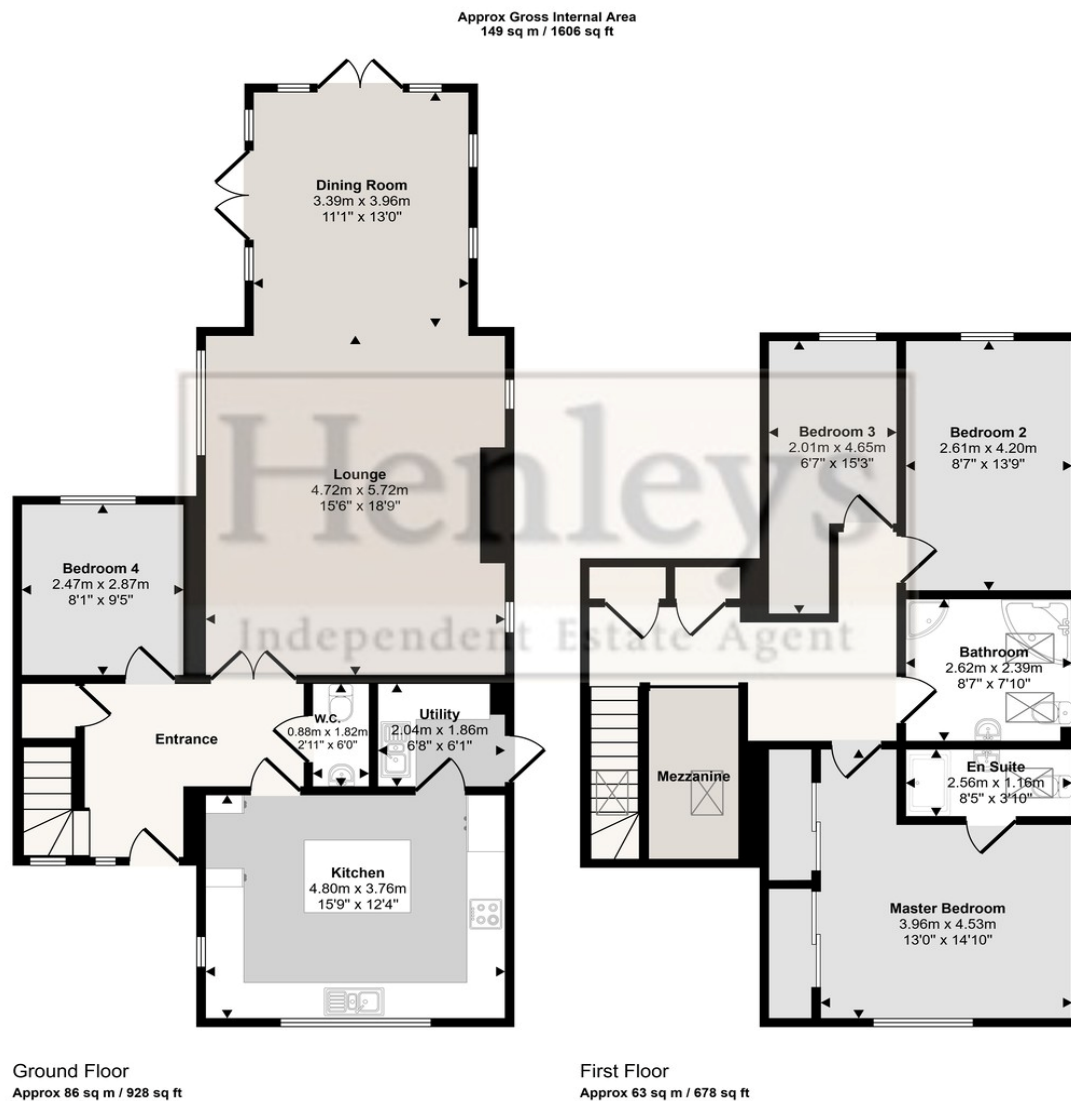
**Henleys**  
Independent Estate Agent



**Henleys**  
Independent Estate Agent



**Henleys**  
Independent Estate Agent



This floorplan is only for illustrative purposes and is not to scale. Measurements of rooms, doors, windows, and any items are approximate and no responsibility is taken for any error, omission or mis-statement. Icons of items such as bathroom suites are representations only and may not look like the real items. Made with Made Snappy 360.



Score	Energy rating	Current	Potential
92+	A		
81-91	B		83 B
69-80	C	71 C	
55-68	D		
39-54	E		
21-38	F		
1-20	G		