





This extended three bedroom semi detached property occupies a quiet cul de sac location. The property benefits from a spacious living area, conservatory and study, a single garage and ample parking.

Tenure: Freehold

Council Tax Band: C

EPC: TBA

Property Type : Semi-Detached

Property Construction: Brick and tile

Number & Types of Room: Please refer to the floorplan

Square Footage: 1055

Parking: Single Garage & Driveway

Electric Supply: Mains

Heating: Oil

Water Supply: Mains

Sewerage: Mains

Broadband Connected: Yes

Rights of Way – None that the vendor is aware of
Listed – N/A

Conservation Area – No

HALLWAY

Laminate flooring.

LIVING ROOM

Carpet flooring, window to front, patio doors to conservatory.

CONSERVATORY

Laminate flooring, doors to garden.

DINING AREA

Laminate flooring, cupboard, window to rear.

KITCHEN



Tiled flooring, gloss finish base and eye level units, wood effect work surface, ceramic hob, extractor, double oven, tiled splash back, sink with mixer tap, window to front.

UTILITY ROOM

Tiled flooring, boiler, base units, with work surface over, space for washing machine and fridge/freezer, door to garden.

STUDY

Carpet flooring, window to rear.

CLOAKROOM

Tiled flooring, toilet, sink with vanity, window to side.

BEDROOM 1

Carpet flooring, window to front.

BEDROOM 2

Carpet flooring, built in cupboard, window to front.

BEDROOM 3

Carpet flooring, built in wardrobe, window to rear.

BATHROOM

LVT flooring, bath with shower over and screen, toilet, sink with vanity, tiled splash back, heated towel rail, window to rear.

OUTSIDE

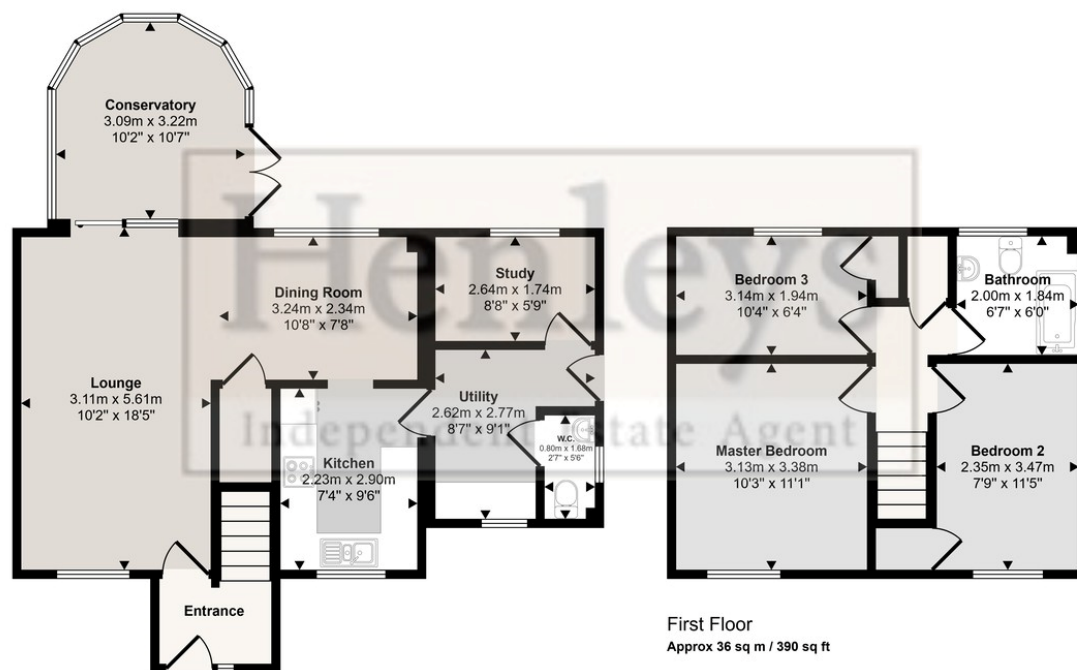
Front: Single garage with power and light, side access to garage, side gate to garden, parking for several vehicles.

Rear: Patio area, garden laid mostly to lawn.





Approx Gross Internal Area
98 sq m / 1055 sq ft



Ground Floor
Approx 62 sq m / 665 sq ft

This floorplan is only for illustrative purposes and is not to scale. Measurements of rooms, doors, windows, and any items are approximate and no responsibility is taken for any error, omission or mis-statement. Icons of items such as bathroom suites are representations only and may not look like the real items. Made with Made Snappy 360.



TBA