





**** A FANTASTIC FAMILY HOME WITH SPACIOUS LIVING **** Henley's are delighted to bring to the market, this SIX bedroom DETACHED family home located in the village of Beck Row. The home itself is bright, spacious and modern and boasts ample space for family living. The home is set over 3 floors, and has a living room, kitchen/diner, UTILITY ROOM and downstairs cloakroom. There are 6 bedrooms over the two floors, with ENSUITE, and two family bath/shower rooms. Outside, the property faces a lawned area, has a fully enclosed rear garden and DOUBLE GARAGE with driveway.

Property Info:

Tenure: Freehold

Parking: Double Garage to side

Heating: Electric Heating

Doors/windows: UPVC Double Glazed

Council tax band: E

EPC rating band: C

ENTRANCE HALL

Carpeted, W/C to right, radiator

W/C

Lino flooring, sink with mixer tap, splashback tiles, radiator, extractor fan

LOUNGE

10' 2" x 20' 4" (3.1m x 6.2m) Carpeted, Window to front, french doors to rear garden, radiator to front and back



KITCHEN/DINER

8' 1" x 20' 3" (2.46m x 6.17m) Lino tile effect flooring, bay window to front, radiator to front and back, wood affect worktops with units, integrated oven and electric hob, extractor hood, stainless steel sink with mixer tap.

UTILITY ROOM

5' 3" x 4' 9" (1.6m x 1.45m) Lino tile effect flooring, stainless steel sink with mixer tap. Space for washer/dryer, wood affect worktops and units, radiator, backdoor to rear garden.

LANDING

Stairs and landing carpeted, radiator.

BEDROOM ONE

10' 4" x 10' 8" (3.15m x 3.25m) Carpeted, built in wardrobe, window to rear, radiator, en suite.

ENSUITE

6' 4" x 4' 11" (1.93m x 1.5m) Lino tiled effect flooring, shower cubical, sink mixer tap, toilet, radiator, window to rear, extractor fan.

BEDROOM THREE

8' 4" x 12' 9" (2.54m x 3.89m) Carpeted, window to rear, radiator.

BEDROOM FIVE

10' 4" x 5' 10" (3.15m x 1.78m) Carpeted, window to front, radiator.

BEDROOM SIX/STUDY

8' 5" x 7' 0" (2.57m x 2.13m) Carpeted, window to front, radiator.







BATHROOM

6' 1" x 5' 11" (1.85m x 1.8m) Lino tiled effect flooring, toilet, bath with shower over, sink with mixer tap, radiator, window to front, extractor fan.

LANDING

Carpeted, skylight

BEDROOM FOUR

10' 8" x 6' 5" (3.25m x 1.96m) Carpeted, radiator, skylight, window to rear.



BATHROOM

7' 3" x 5' 4" (2.21m x 1.63m) Shower cubical, toilet, sink with mixer tap, radiator, window to front, lino tiled effect flooring.

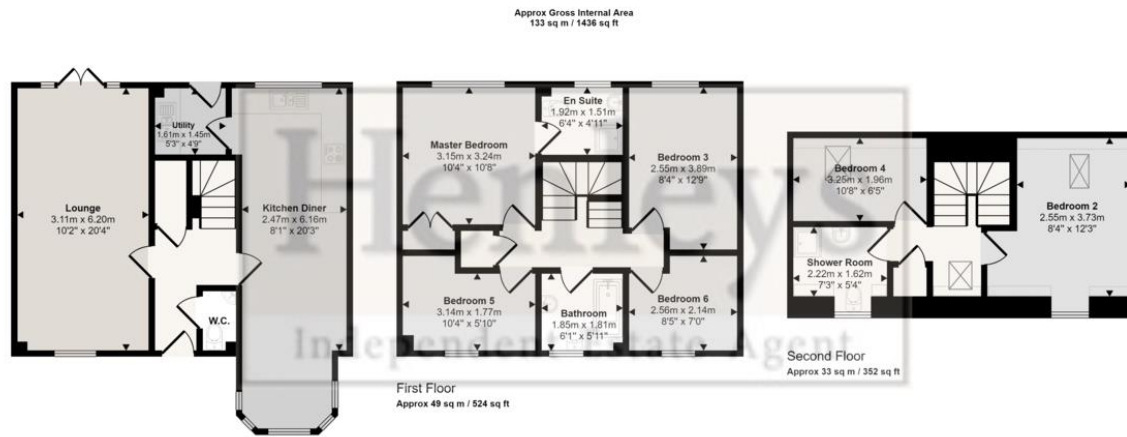
BEDROOM TWO

8' 4" x 12' 3" (2.54m x 3.73m) Carpeted, radiator, window to front, skylight to rear, loft access.

GARDEN

The rear garden is fully enclosed with brick wall surrounds, laid to lawn with patio area and back gate leading onto driveway and double garage.





Ground Floor
Approx 52 sq m / 560 sq ft

Denotes head height below 1.5m

This floorplan is only for illustrative purposes and is not to scale. Measurements of rooms, doors, windows, and any items are approximate and no responsibility is taken for any error, omission or mis-statement. Icons of items such as bathroom suites are representations only and may not look like the real items. Made with Made Snappy 360.

Score	Energy rating	Current	Potential
92+	A		
81-91	B		91 B
69-80	C	79 C	
55-68	D		
39-54	E		
21-38	F		
1-20	G		