



Derby Road, SW19

£995,000

3 1 1 E

- Mid Terrace Victorian
- Contemporary Design

- Double Glazed Throughout
- Excellent Condition

- Extended Kitchen And Loft
- Popular Street





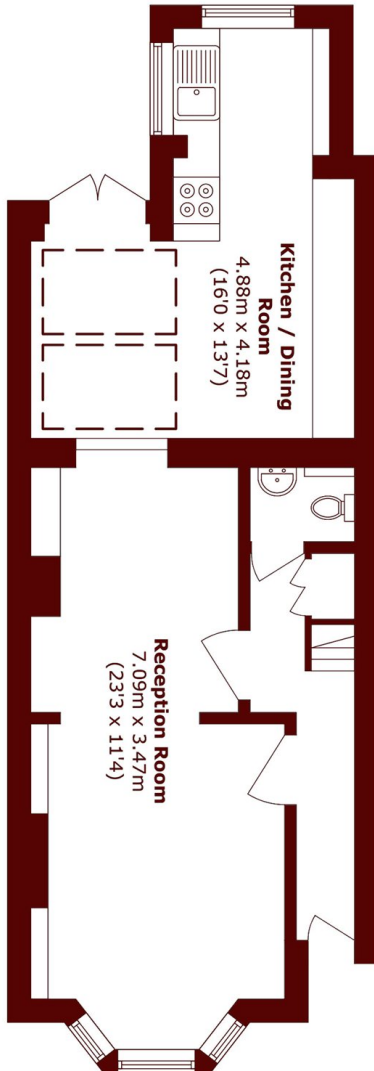
ABOUT THE PROPERTY

This stylishly-designed house conceals more square footage than many other similar-looking properties. Its excellent kitchen extension creates a great family living space and its sizeable loft has been converted into a large and bright 3rd double bedroom. It's close to Wimbledon Broadway for excellent tube and train links to the City and West End and popular primary schools.

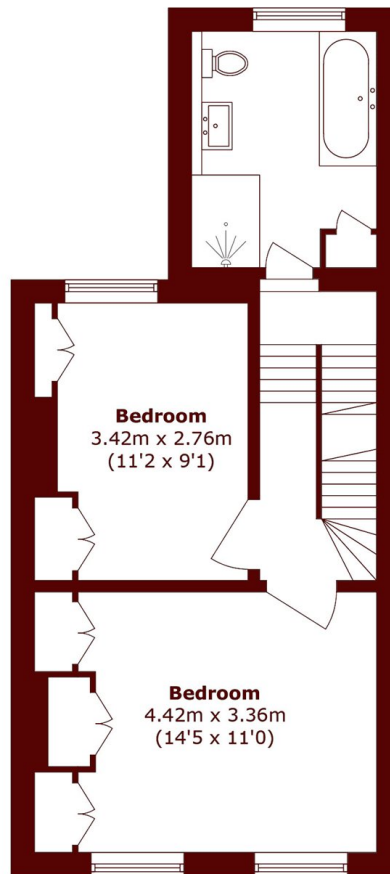
This extended, Victorian, terraced house has been tastefully modernised inside and out. The double reception room features a fireplace and high ceilings, angle bay and wood floors which run through into the hall. A contemporary kitchen extension has transformed the rear space on the ground floor into a light kitchen/family/dining room opening out through french doors to the garden. It is fitted with an extensive range of modern units, granite worktops and built-in appliances whilst still allowing ample dining space for a family. The garden is attractively landscaped with a patio for outside dining. Additionally, there is a handy downstairs WC.

Over the upper floors the attractive, light neutrally decorated feel continues. There are three double bedrooms in total, including a lovely spacious main bedroom to the front. These rooms are well served by a family bathroom with separate shower on the first floor.

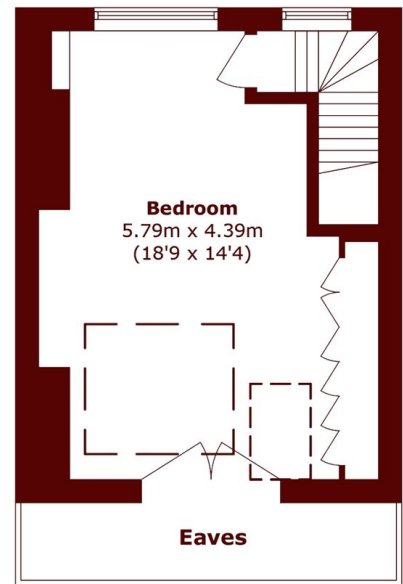




Ground Floor



First Floor



Second Floor

Total area (approx.): 112.5 sq. m (1210.9 sq. ft)
(Excluding Eaves)

Marsh & Parsons Wimbledon

24 High Street, Wimbledon
Village, SW19 5DX
020 8879 6660

We aim to make our particulars both accurate and reliable. However, they are not guaranteed; nor do they form part of an offer or contract. If you require clarification on any points then please contact us, especially if you're traveling some distance to view. Please note that appliances and heating systems have not been tested and therefore no warranties can be given as to their good working order.