

## Penthouse Apartment, Somerset House, Somerset Road, Wimbledon SW19 5JA



### Offers In Excess Of £899,000 Share of Freehold

An exceptional apartment with breath-taking views situated on the tenth floor of the prestigious Somerset House within the exclusive Oakfield Development, this two-bedroom apartment offers uninterrupted panoramic views across central London and the iconic All England Lawn Tennis Club. The spacious double-aspect living room is a standout feature, with an entire wall of picture windows flooding the space with natural light and showcasing the stunning outlook. The kitchen is bright and airy and includes a dedicated dining area. The principal bedroom enjoys direct views over the tennis club and benefits from built-in wardrobes and a newly refurbished en-suite shower room. A second double bedroom is served by a newly renovated modern family bathroom, and the apartment is further enhanced by a large hallway. Somerset House is set within acres of immaculately maintained communal gardens, featuring manicured lawns and mature trees. The development offers sophisticated amenities, including an elegant entrance hall, high-specification lifts, porter service and secure underground parking. The property also includes a share of the freehold, long lease and is chain free. Council tax band G (Merton).

- Tenth floor (penthouse) apartment with far reaching views
- Two double bedrooms with fitted wardrobes
- Reception/dining/kitchen with panoramic views
- Two bath/shower rooms (one en-suite)
- Amazing views of The All England Club
- Secure underground parking, close lift proximity
- Communal gardens and portage
- Chain free
- Long lease - approx 961 years
- Service charge £6,543 pa

020 8971 6780

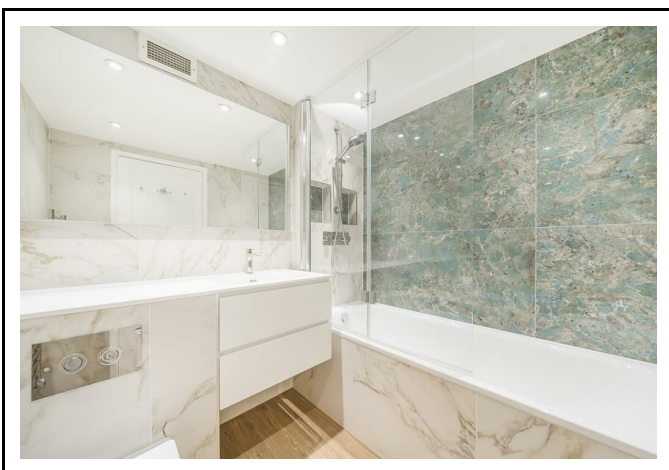
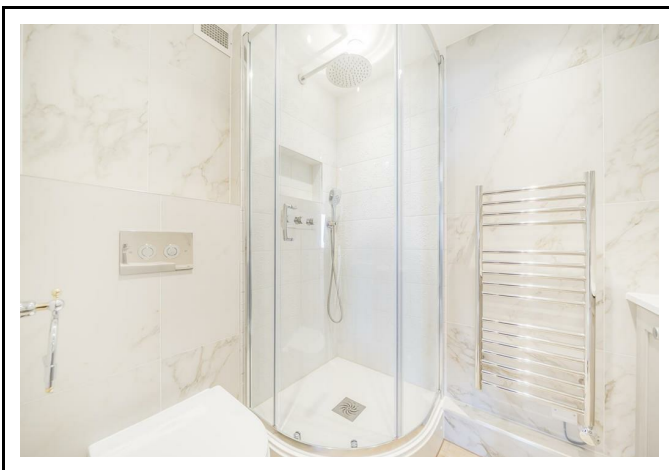
24 High Street, Wimbledon Village, SW19 5DX



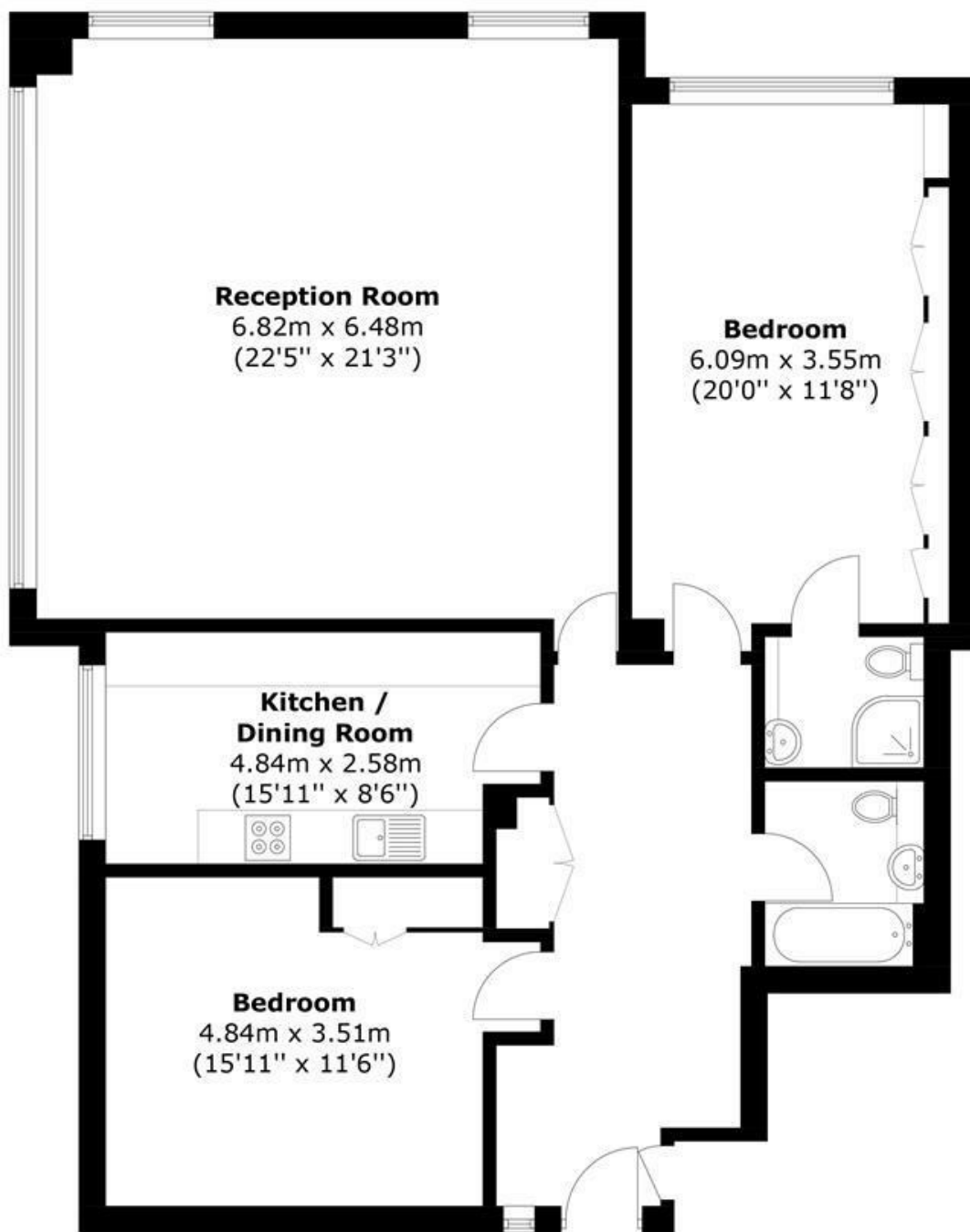
**Location:**

Somerset House located on a private estate on Somerset Road in a prime location within walking distance of the fashionable shops, boutiques and restaurants of Wimbledon Village as well as Wimbledon Windmill and Wimbledon Common which offers a variety of delightful walks and recreational facilities. The many amenities of Wimbledon Town centre are easily accessible including the Mainline/District line station.









## Tenth Floor

Total area: Approx. 116.4 sq. meters (1,252.9 sq. feet)

**EPC Rating D**

**Council Tax: G**

**Lease: Approx 961 years with share of freehold**

**Service Charge: £6,543 pa**



**Viewing Strictly By Appointment Through Sole Selling Agents Andrew Scott Robertson**

Note: andrew scott robertson for itself and for the vendors or lessors of this property whose agents they are give notice that:

- (i) the particulars are set out as a general outline only for the guidance of intending purchasers or lessees, and do not constitute, nor constitute part of, an offer or contract
- (ii) all descriptions, dimensions, references to condition and necessary permissions for use and occupation, and other details are given in good faith and are believed to be correct but any intending purchasers or tenants should not rely on them as statements or representations of fact but must satisfy themselves by inspection or otherwise as to the correctness of each of them;
- (iii) no person in the employment of andrew scott robertson has any authority to make or give any representation or warranty whatsoever in relation to this property.

We are here to help you find your next home. Prior to viewing we recommend that you discuss any particular points which are likely to affect your interest in the property with a member of staff who has seen the property in order that you do not make a wasted journey. If you would like to view the property or require further information please call: 020 8971 6780