

Merton Hall Road, Wimbledon SW19 3PP



Guide Price £525,000 Share Of Freehold

A well presented split-level two-bedroom, two-bathroom apartment (including one en-suite), offering a share of freehold, a long lease, and low running costs. Ideally situated within easy reach of the vibrant amenities and excellent transport links of Wimbledon Town Centre. Located near the highly regarded Dundonald and Wimbledon Chase primary schools, this bright and spacious maisonette spans the first and second floors and features its own private entrance. Designed for modern living, the property boasts a stylish open-plan kitchen and living area with a small utility space off the kitchen. Additional highlights include, plenty of storage, off-street parking and access to a communal outdoor space. Council tax band D (Merton).

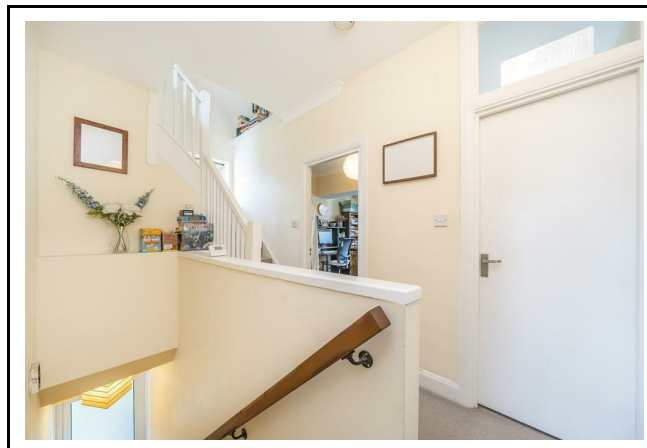
- Split level apartment
- Two bedrooms
- Open plan reception / kitchen
- Two bathrooms (one en-suite)
- Light and bright
- Convenient location
- Close to local shops
- Long lease of 980 years
- Share of freehold
- Service charge £2000 pa

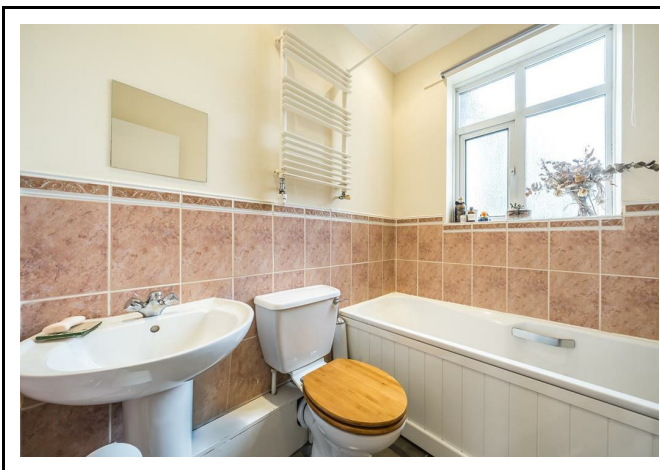
020 8971 6780

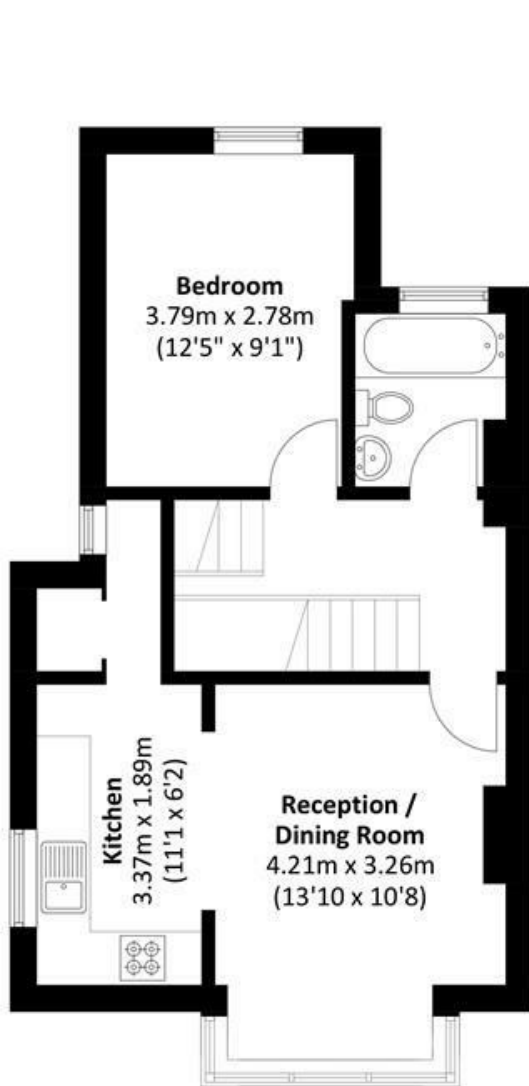
24 High Street, Wimbledon Village, SW19 5DX

Location:

Merton Hall Road is a wide tree-lined road close to Dundonald Park. The property is well located for both Wimbledon Chase Station (overground) and Dundonald Road Tramlink Station. There is a selection of local shops nearby as well as good local schools. Wimbledon Town Centre with its Mainline/District Line Station and many shops, bars, restaurants and entertainment amenities is less than a mile away.



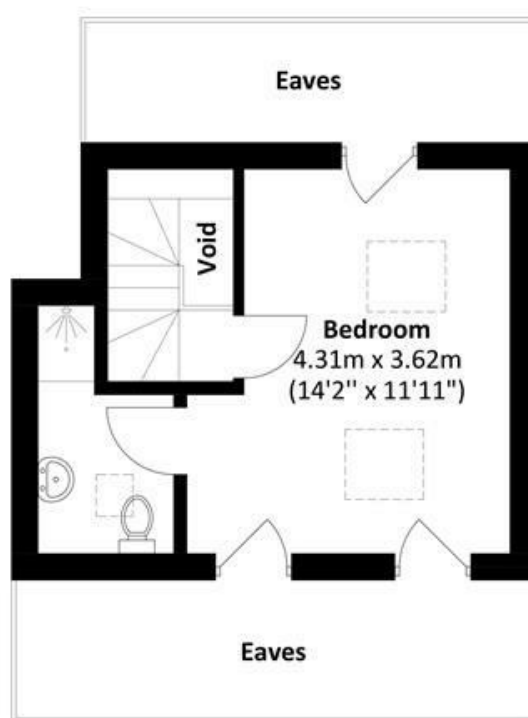




First Floor



Ground Floor



Second Floor

Total area: Approx. 67.0 sq. meters (721.2 sq. feet)
(Excluding Eaves / Void)

EPC Rating C

Council Tax: D

Lease: 980 years - Share Of Freehold

Service Charge: £2000 pa



Viewing Strictly By Appointment Through Sole Selling Agents Andrew Scott Robertson

Note: andrew scott robertson for itself and for the vendors or lessors of this property whose agents they are give notice that:

- (i) the particulars are set out as a general outline only for the guidance of intending purchasers or lessees, and do not constitute, nor constitute part of, an offer or contract
- (ii) all descriptions, dimensions, references to condition and necessary permissions for use and occupation, and other details are given in good faith and are believed to be correct but any intending purchasers or tenants should not rely on them as statements or representations of fact but must satisfy themselves by inspection or otherwise as to the correctness of each of them;
- (iii) no person in the employment of andrew scott robertson has any authority to make or give any representation or warranty whatsoever in relation to this property.

We are here to help you find your next home. Prior to viewing we recommend that you discuss any particular points which are likely to affect your interest in the property with a member of staff who has seen the property in order that you do not make a wasted journey. If you would like to view the property or require further information please call: 020 8971 6780