

Belvedere Square, Wimbledon SW19 5DJ



Offers In Excess Of £700,000 Freehold

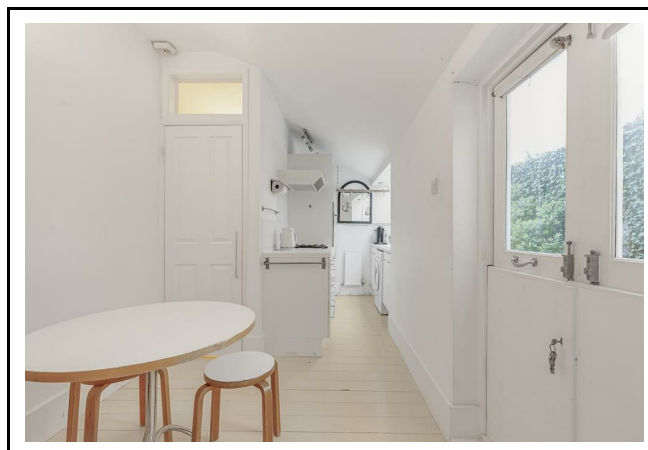
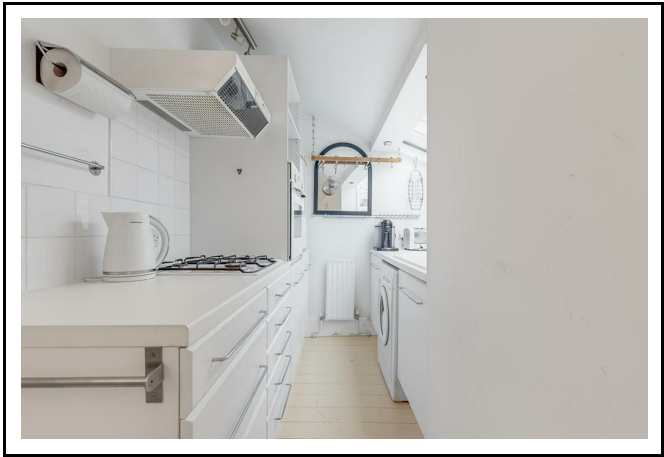
A well-presented, Grade II listed end-of-terrace period cottage nestled in a charming and tranquil cul-de-sac just off Church Road in the heart of Wimbledon Village. This delightful and naturally bright home showcases characterful period features, an enclosed porch, and a south-westerly facing rear courtyard garden with direct access to Courthope Road. The property includes a lovely sitting room, a galley kitchen, and a convenient downstairs WC. Upstairs, there is a light and airy bedroom with an ensuite bathroom, as well as a mezzanine level that offers useful storage space. With scope for modernisation, this attractive cottage presents an excellent opportunity to create a stylish pied-à-terre. Ideally situated just moments from the boutiques, restaurants, and amenities of Wimbledon Village. Council tax band D (Merton).

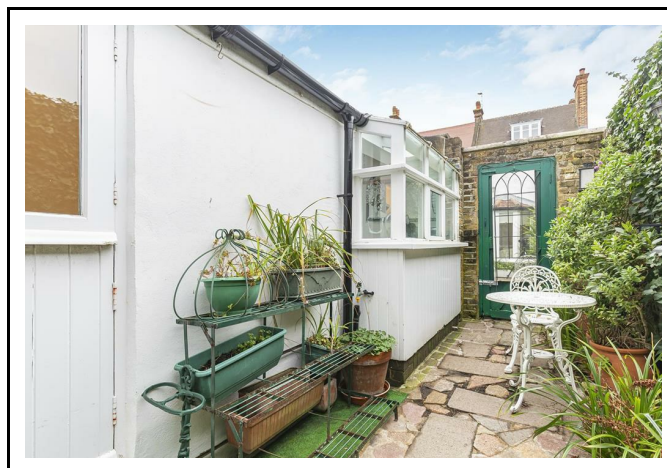
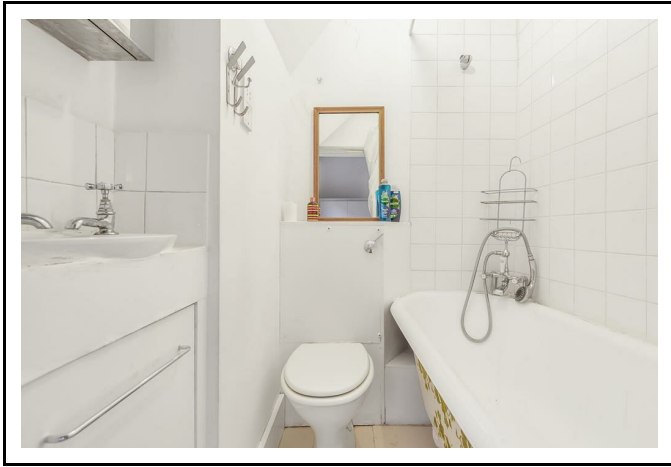
- Grade II listed period cottage
- One bedroom
- Bathroom (en-suite)
- Mezzanine storage area
- Guest cloakroom
- Galley kitchen
- South Westerly facing courtyard garden
- Scope for modernisation
- Quiet cul-de-sac
- In the heart of Wimbledon Village

020 8971 6780
24 High Street, Wimbledon Village, SW19 5DX

Location:

Belvedere Square is located off Church Road is one of Wimbledon's most sought after addresses and is in a prime location within walking distance of the fashionable shops, boutiques and restaurants of Wimbledon Village and is less than a quarter of a mile from Wimbledon Common which offers a variety of delightful walks and recreational facilities.





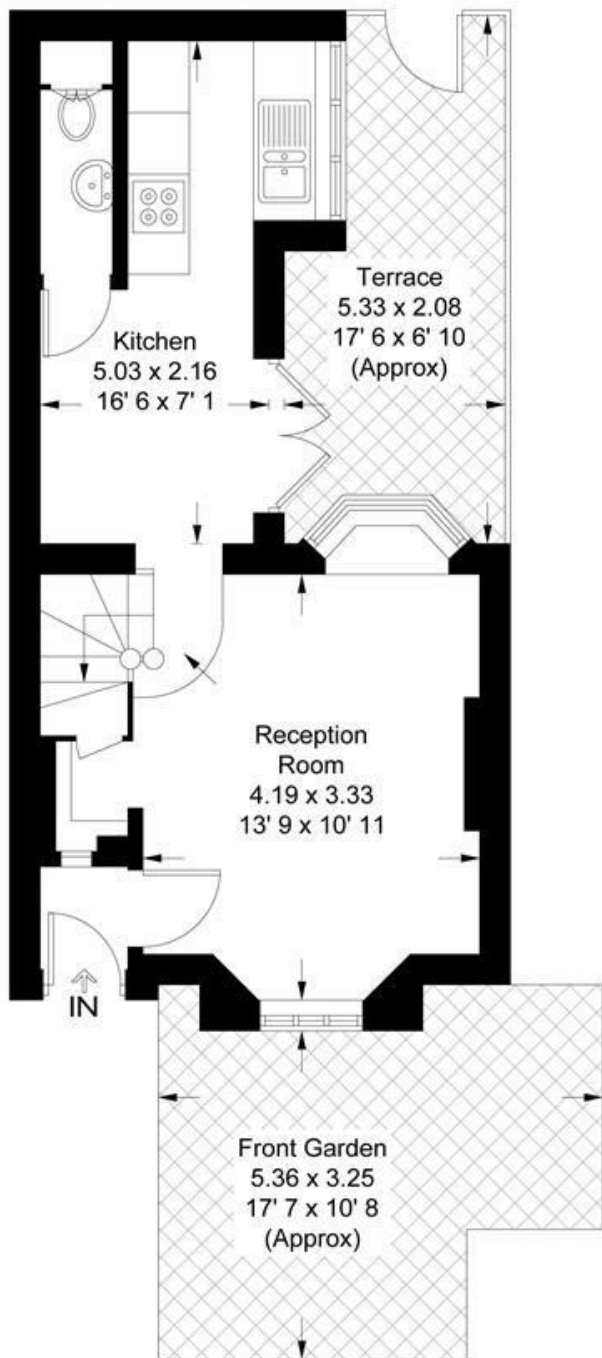
Belvedere Square


Approximate Gross Internal Area = 506 sq ft / 46.9 sq m

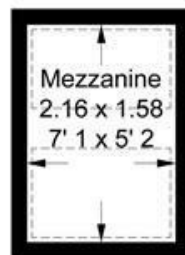
(Excluding Reduced Headroom)

Reduced Headroom = 24 sq ft / 2.2 sq m

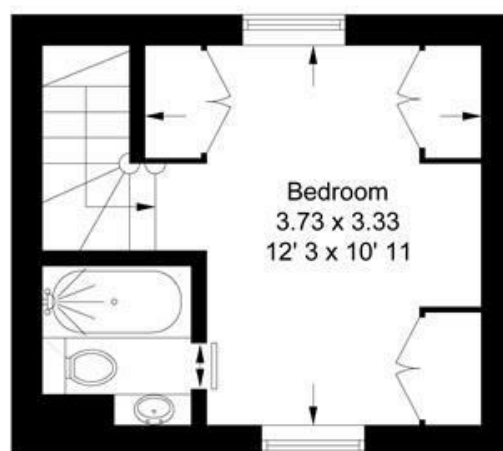
Total = 530 sq ft / 49.1 sq m



 = Reduced headroom below 1.5m / 5'0



Mezzanine
34 sq ft / 3.1 sq m
(Including Reduced Headroom)



First Floor
176 sq ft / 16.3 sq m

Ground Floor
320 sq ft / 29.7 sq m

This plan is not to scale and must be used as layout guidance only. All measurements and areas are approximate and should not be relied upon to provide accurate information. This plan must not be relied upon when making property valuations, design considerations or any other such relevant decisions. We accept no responsibility or liability (whether in contract, tort or otherwise) in relation to any loss whatsoever arising from or in connection with any use of this plan or the adequacy, accuracy or completeness of it or any information within it.



EPC Rating E
Council Tax: D



Viewing Strictly By Appointment Through Sole Selling Agents Andrew Scott Robertson

Note: andrew scott robertson for itself and for the vendors or lessors of this property whose agents they are give notice that:

- (i) the particulars are set out as a general outline only for the guidance of intending purchasers or lessees, and do not constitute, nor constitute part of, an offer or contract
- (ii) all descriptions, dimensions, references to condition and necessary permissions for use and occupation, and other details are given in good faith and are believed to be correct but any intending purchasers or tenants should not rely on them as statements or representations of fact but must satisfy themselves by inspection or otherwise as to the correctness of each of them;
- (iii) no person in the employment of andrew scott robertson has any authority to make or give any representation or warranty whatsoever in relation to this property.

We are here to help you find your next home. Prior to viewing we recommend that you discuss any particular points which are likely to affect your interest in the property with a member of staff who has seen the property in order that you do not make a wasted journey. If you would like to view the property or require further information please call: 020 8971 6780