

## Hightrees, Queensmere Road, Wimbledon SW19 5PD



### Offers In Excess Of £600,000 Leasehold

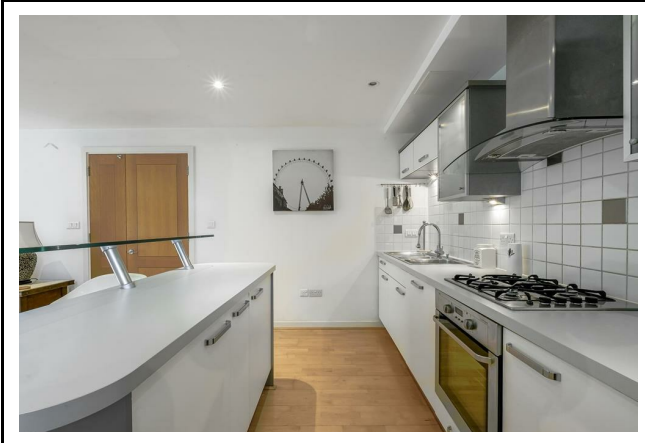
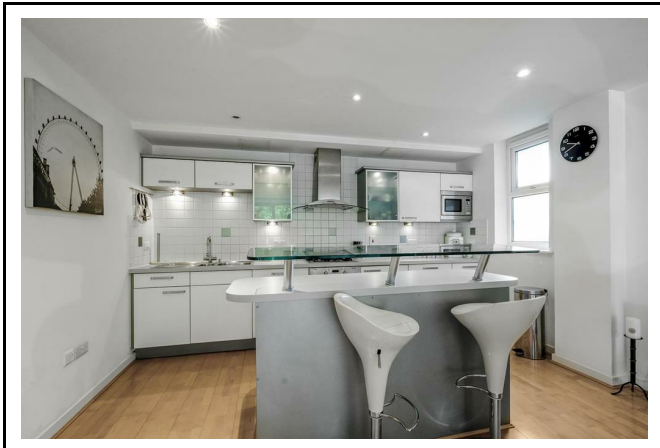
Situated on the first floor of this architecturally striking, compact luxury gated development, adjacent to Wimbledon Common and close to the All England Lawn Tennis Club, a superb contemporary two bedroom apartment with two bathrooms and allocated parking. Hightrees has the feel and ambiance of a luxury hotel, there is a lift with very smart communal areas and the gardens are neat and well maintained. The apartment has ample storage and would make a fantastic lock up and leave and is located in Wandsworth Borough Council, which helps to reduce monthly outgoings. Council tax band F (Wandsworth).

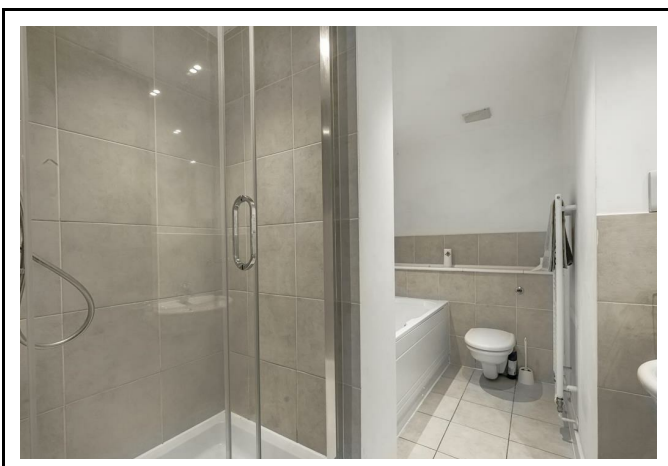
020 8971 6780  
24 High Street, Wimbledon Village, SW19 5DX

- Superb luxury two bedroom apartment
- Spacious hallway
- Open plan living room
- Luxurious kitchen area
- Two bathrooms
- Lift service
- Allocated parking
- Secure gated development
- Leasehold - 102 years (owners have shares in Hightrees Property RTM Co Ltd - Freeholder)
- Service Charge: £4333.80 pa (incl ground rent and water)

**Location:**

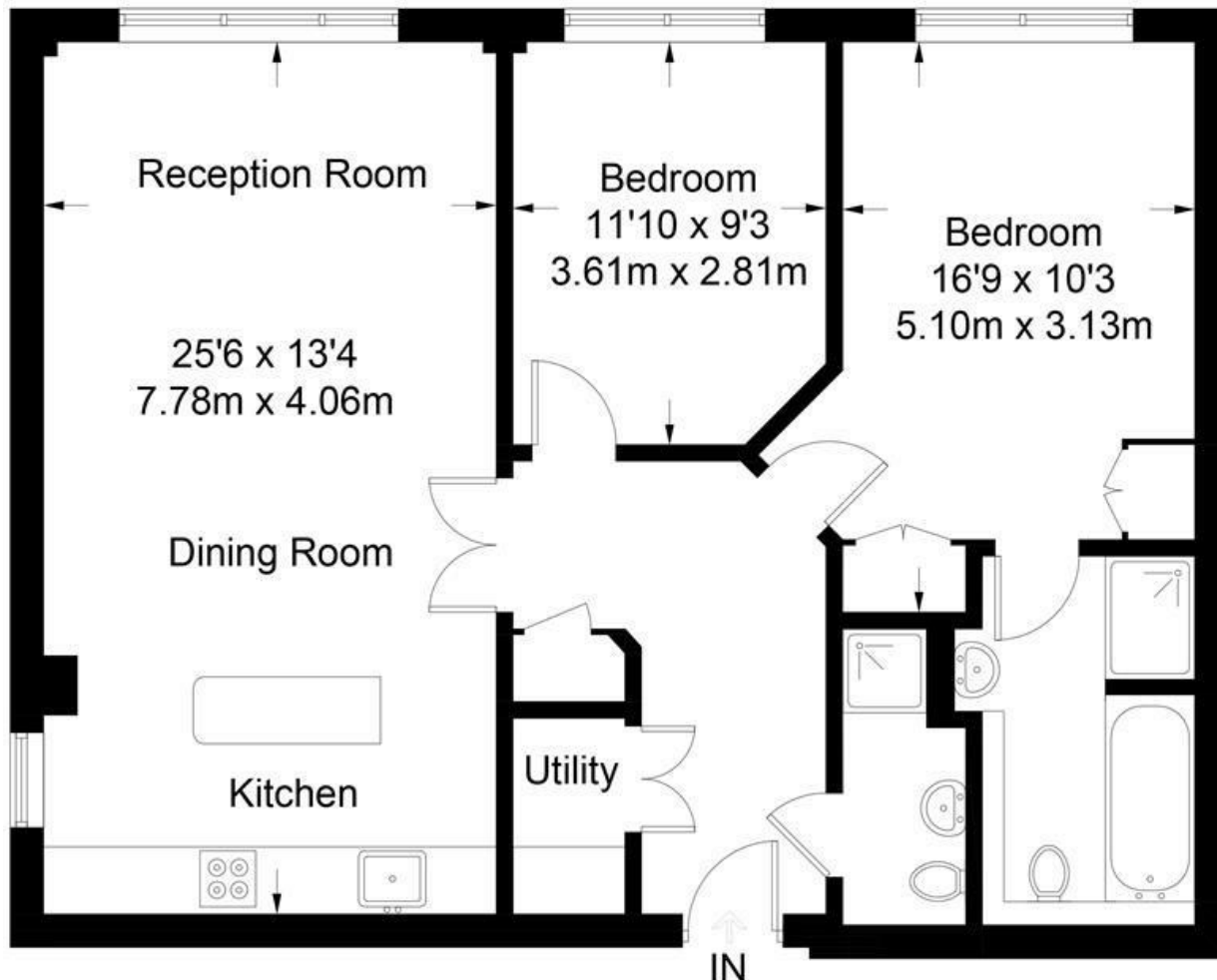
Queensmere Road is situated moments from Wimbledon Common which offers a variety of delightful walks and recreational facilities. Wimbledon Village itself is less than a mile away and is renowned as one of the most desirable residential locations south of the River Thames. Wimbledon offers exceptional transport facilities both by rail and underground whilst Southfields tube station is one mile away. The A3 offers easy access to the M25 and other major road networks.





# High Trees

Approximate Gross Internal Area = 870 sq ft / 80.8 sq m



Not to scale, for guidance only and must not be relied upon as a statement of fact.  
All measurements and areas are approximate only and have been prepared in accordance with the current edition of the RICS Code of Measuring Practice.

**EPC Rating B**

**Council Tax: F (Wandsworth)**

**Lease: 102 years (each flat owner has shares in Hightrees Prop RTM Co Ltd who is the Freeholder)**

**Service Charge £4333.80 p.a. (includes Ground Rent + water)**



**Viewing Strictly By Appointment Through Sole Selling Agents Andrew Scott Robertson**

Note: andrew scott robertson for itself and for the vendors or lessors of this property whose agents they are give notice that:

- (i) the particulars are set out as a general outline only for the guidance of intending purchasers or lessees, and do not constitute, nor constitute part of, an offer or contract
- (ii) all descriptions, dimensions, references to condition and necessary permissions for use and occupation, and other details are given in good faith and are believed to be correct but any intending purchasers or tenants should not rely on them as statements or representations of fact but must satisfy themselves by inspection or otherwise as to the correctness of each of them;
- (iii) no person in the employment of andrew scott robertson has any authority to make or give any representation or warranty whatsoever in relation to this property.

We are here to help you find your next home. Prior to viewing we recommend that you discuss any particular points which are likely to affect your interest in the property with a member of staff who has seen the property in order that you do not make a wasted journey. If you would like to view the property or require further information please call: 020 8971 6780