



TO LET

WELFORD PLACE

LONDON, SW19 5AJ



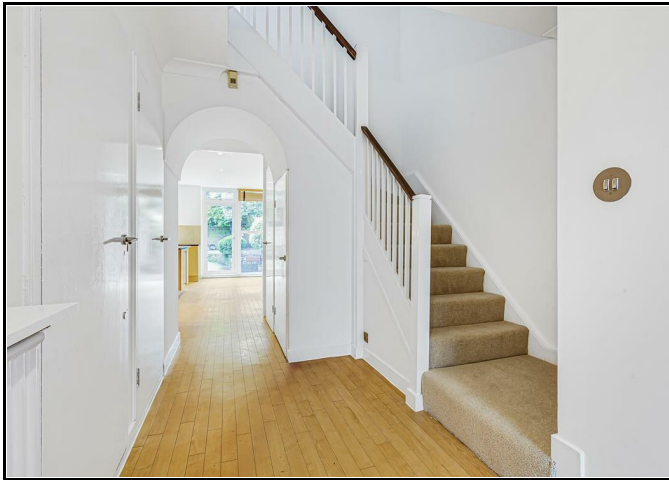
Recently redecorated throughout with new carpets, fantastic five double bedroom house in prestigious development with residents indoor pool complex and children's play area very close to Wimbledon Village. Set over four floors the spacious and versatile accommodation comprises, to the ground floor, a bright and airy open plan kitchen/family room with doors to an attractive rear garden, separate utility room, cloakroom and access to garage. On the first floor is a well proportioned sitting room and a bedroom with en-suite shower room. The second floor has three further bedrooms and two bath/shower rooms. On the third floor is a wonderful family room/ fifth bedroom with doors to large roof terrace affording far reaching views. Available 20th July - Unfurnished - EPC rating D - Council Tax Band G - Holding Deposit £1,269.00 - Total Deposit £6,345.00

£5,500 PCM Per Calendar Month

020 8971 6780

24 High Street, Wimbledon Village, Wimbledon Village Lettings, London, SW19 5DX





5 Bedrooms
3 Bathrooms
2 Reception rooms

EPC Rating: D

Available From: 20th July 2024

Note: andrew scott robertson for itself and for the lessors of this property whose agents they are give notice that:

- (i) the particulars are set out as a general outline only for the guidance of intending lessees, and do not constitute, nor constitute part of, an offer or contract
- (ii) all descriptions, dimensions, references to condition and necessary permissions for use and occupation, and other details are given in good faith and are believed to be correct but any intending tenants should not rely on them as statements or representations of fact but must satisfy themselves by inspection or otherwise as to the correctness of each of them;
- (iii) no person in the employment of andrew scott robertson has any authority to make or give any representation or warranty whatsoever in relation to this property.

We are here to help you find your next home. Prior to viewing we recommend that you discuss any particular points which are likely to affect your interest in the property with a member of staff who has seen the property in order that you do not make a wasted journey. If you would like to view the property or require further information please call: 020 8971 6780