



TO LET DOWNINGS HOUSE , SW19 1ND



Stylish and extremely spacious two double bedroom, two bathroom apartment in this imposing Victorian school conversion with lift service conveniently situated for both Wimbledon town centre, station and South Wimbledon tube station (Northern line). Accommodation comprises; large reception room with staircase leading to a mezzanine reception/ study area with fitted cupboards, modern kitchen, good size master bedroom with range of fitted wardrobes and en-suite bathroom, second double bedroom and family bathroom. The development also benefits from a communal gym, off street parking, lift service and on-site caretaker. Available now - Unfurnished - EPC rating C - Council Tax Band F - Holding Deposit £611.00 - Total Deposit £3,055.00

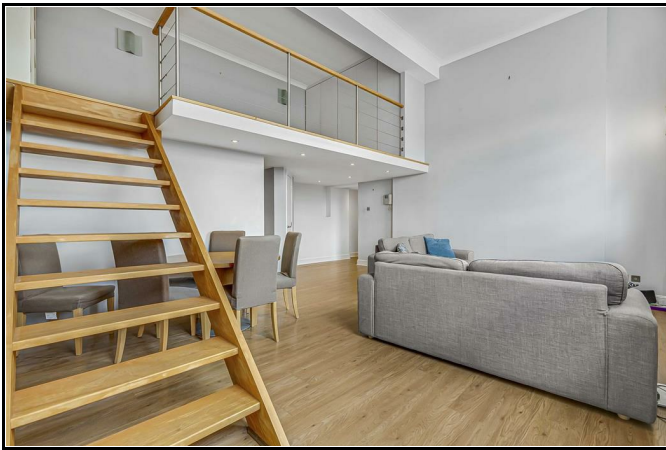
£2,650 PCM Per Calendar Month

020 8971 6780

24 High Street, Wimbledon Village, Wimbledon Village Lettings, London, SW19 5DX

PROFESSIONAL PROPERTY PEOPLE





2 Bedrooms
2 Bathrooms
2 Reception rooms

EPC Rating: C

Available From: 15th April 2024

Note: andrew scott robertson for itself and for the lessors of this property whose agents they are give notice that:

- (i) the particulars are set out as a general outline only for the guidance of intending lessees, and do not constitute, nor constitute part of, an offer or contract
- (ii) all descriptions, dimensions, references to condition and necessary permissions for use and occupation, and other details are given in good faith and are believed to be correct but any intending tenants should not rely on them as statements or representations of fact but must satisfy themselves by inspection or otherwise as to the correctness of each of them;
- (iii) no person in the employment of andrew scott robertson has any authority to make or give any representation or warranty whatsoever in relation to this property.

We are here to help you find your next home. Prior to viewing we recommend that you discuss any particular points which are likely to affect your interest in the property with a member of staff who has seen the property in order that you do not make a wasted journey. If you would like to view the property or require further information please call: 020 8971 6780