

Headley Court, Worple Road, Wimbledon SW19 4HY



Offers In Excess Of £500,000 Leasehold

A delightful first floor apartment within a highly coveted development near Wimbledon town centre. This charming residence offers two spacious double bedrooms, a bright and airy living room, a separate contemporary kitchen featuring integrated appliances, and a modern, well-appointed bathroom. Enjoying picturesque southerly views, the property benefits from a peaceful location at the rear of the development, away from the main road. There is also rear access to pretty communal gardens. Ideally situated for Wimbledon town centre with its excellent transport links and shopping facilities as well as being within easy reach of Wimbledon Village with its boutique shops, bars, restaurants and green spaces. The apartment also benefits from being chain free and permit parking is available. Council tax band D (Merton).

- First floor apartment
- Two double bedrooms
- Spacious bright living room
- Fully fitted kitchen
- Modern Bathroom
- Southerly views
- Chain free
- Excellent location
- Leasehold - approx 109 years
- Service charge £2675 pa - Ground Rent £100 pa

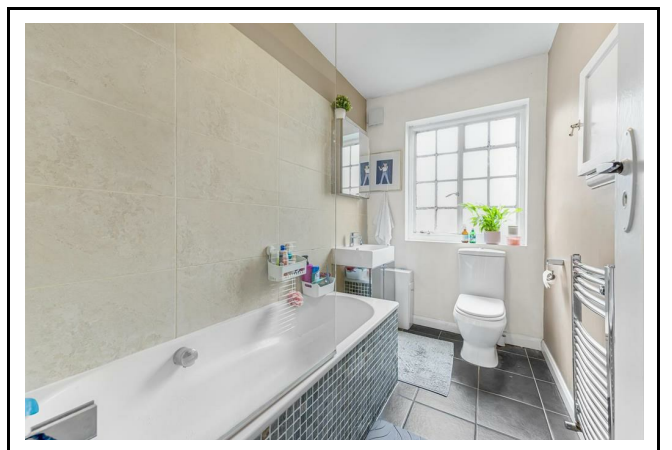
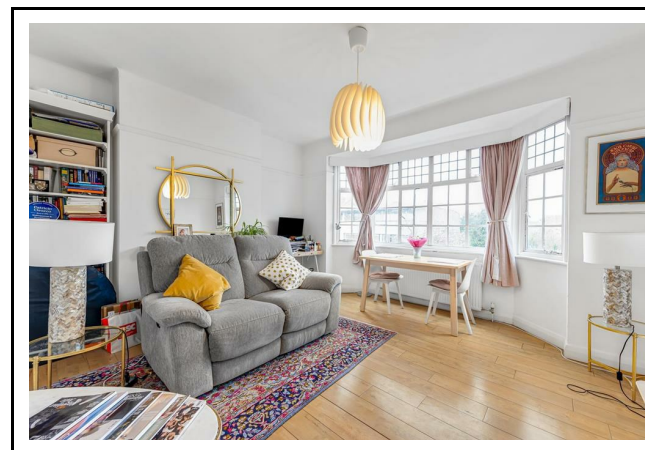
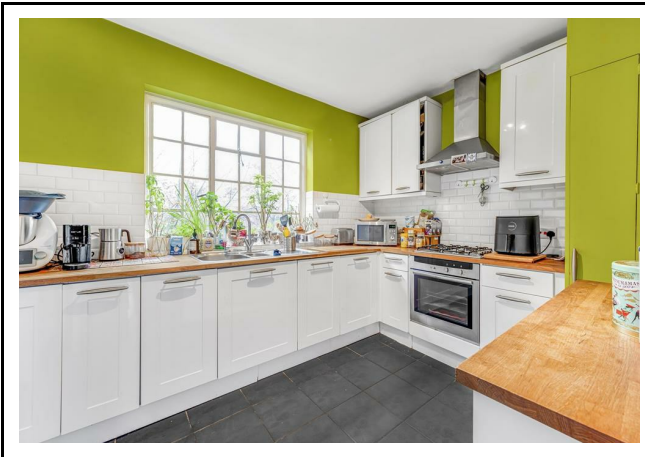
020 8971 6780

24 High Street, Wimbledon Village, SW19 5DX

PROFESSIONAL PROPERTY PEOPLE

Location:

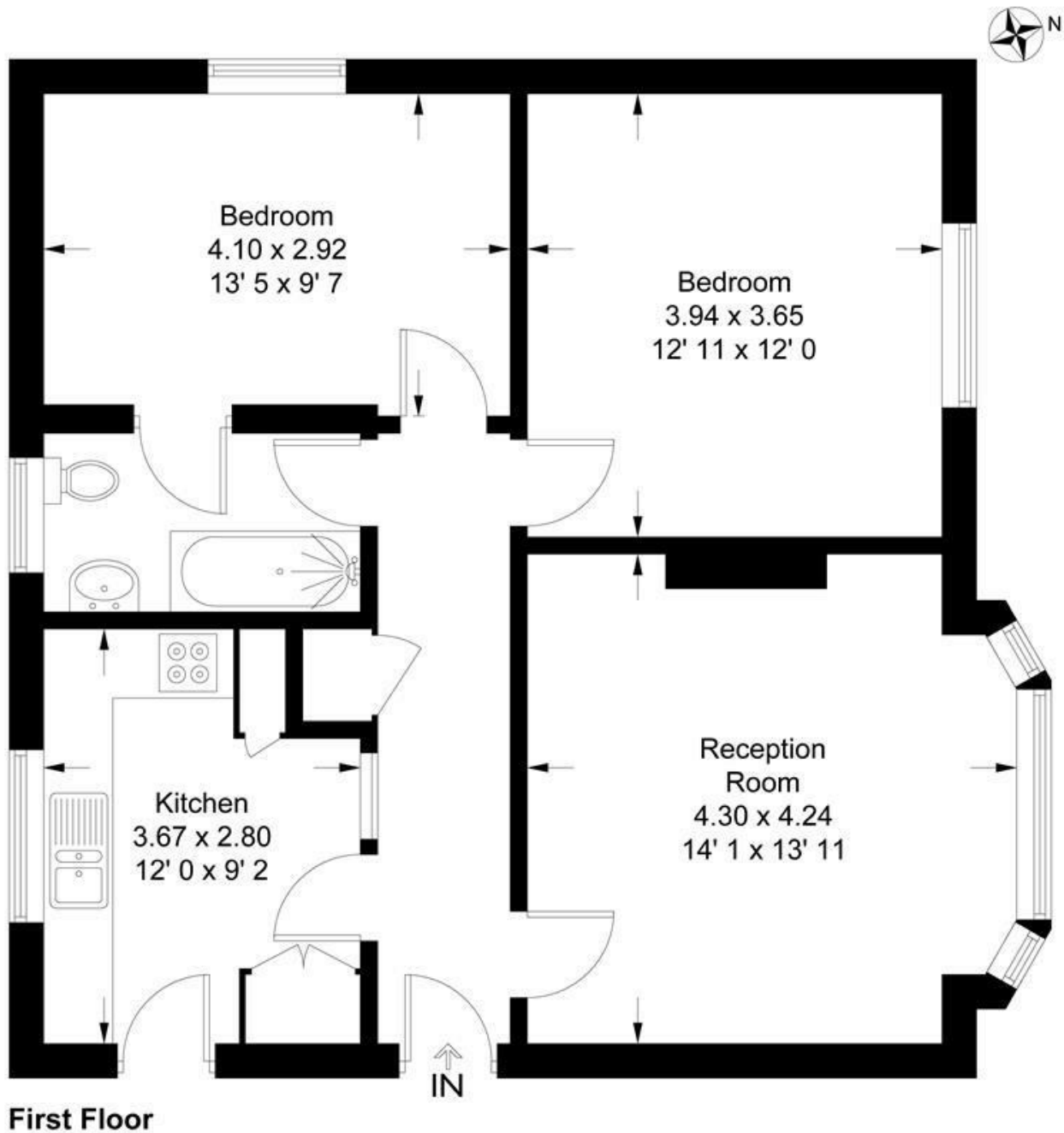
Headley Court is on Worple Road and is conveniently placed within half a mile of Wimbledon Town Centre with its Mainline/District line station, Centre Court Shopping Centre, and numerous bars, restaurants and entertainment facilities. Wimbledon Village and Common are also easily accessible.





Headley Court

Approximate Gross Internal Area = 715 sq ft / 66.4 sq m



This plan is not to scale and must be used as layout guidance only. All measurements and areas are approximate and should not be relied upon to provide accurate information. This plan must not be relied upon when making property valuations, design considerations or any other such relevant decisions. We accept no responsibility or liability (whether in contract, tort or otherwise) in relation to any loss whatsoever arising from or in connection with any use of this plan or the adequacy, accuracy or completeness of it or any information within it.



EPC Rating C

Council Tax: D

Lease: Approx 109 years - Leasehold

Service Charge: £2675.00 pa

Ground Floor: £100.00 pa

Note: andrew scott robertson for itself and for the vendors or lessors of this property whose agents they are give notice that:

- (i) the particulars are set out as a general outline only for the guidance of intending purchasers or lessees, and do not constitute, nor constitute part of, an offer or contract
- (ii) all descriptions, dimensions, references to condition and necessary permissions for use and occupation, and other details are given in good faith and are believed to be correct but any intending purchasers or tenants should not rely on them as statements or representations of fact but must satisfy themselves by inspection or otherwise as to the correctness of each of them;
- (iii) no person in the employment of andrew scott robertson has any authority to make or give any representation or warranty whatsoever in relation to this property.

We are here to help you find your next home. Prior to viewing we recommend that you discuss any particular points which are likely to affect your interest in the property with a member of staff who has seen the property in order that you do not make a wasted journey. If you would like to view the property or require further information please call: 020 8971 6780

