



Wallasea Gardens

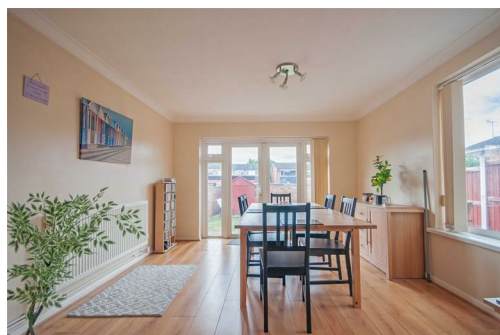
Chelmsford, CM1 6JY

£425,000

Freehold
Tax Band:



Offered for sale is this EXTENDED semi detached home, boasting an IMPRESSIVE SIZED 23' LOUNGE with adjoining dining area and a STUDY / PLAY ROOM (which be used as a FOURTH BEDROOM, if required). Also offering an entrance hall, fitted kitchen, THREE DOUBLE BEDROOMS, family bathroom, , private rear garden and driveway parking to front. Ideally located within a short walk to local schools & highly regarded schooling. Contact Hamilton Piers of Springfield to view!



Wallasea Gardens, Chelmsford, CM1 6JY

Ground Floor:

Entrance Porch:

UPVC entrance door to side, door to entrance hall, cupboard (formerly a cloakroom), wood effect flooring.

Entrance Hall:

Doors to kitchen, lounge diner, study / play room, stairs to first floor, radiator, wood effect flooring.

Kitchen:

12' x 7'9" (3.66m x 2.36m)

Double glazed window to front, range of wall and base units with stainless steel sink inset, integrated low level oven, gas hob with extractor over, space for fridge freezer, washing machine, tumble dryer, cupboard, part tiled walls, tiled flooring.

Lounge Diner:

23'5" x 11'7" x 19'11" (7.14m x 3.53m x 6.07m)

Large L-Shaped and Dual aspect room with double glazed windows to rear and side, French doors to rear, three radiators, wood effect flooring.

Study / Play Room or Bedroom Four:

15'1" x 7'8" (4.60m x 2.34m)

Double glazed window to front, radiator, wood effect flooring. Could possibly be used as fourth bedroom, if required.

First Floor:

Landing:

Doors to bedroom one, bedroom two, bedroom three, family bathroom, cupboard, loft access.

Bedroom One:

11'9" x 11'8" (3.58m x 3.56m)

Double glazed window to rear, fitted wardrobes, radiator, wood effect flooring.

Bedroom Two:

11'8" x 7'11" (3.56m x 2.41m)

Double glazed window to rear, cupboard, radiator, wood effect flooring.

Bedroom Three:

11'9" x 7'11" x 8'10" (3.58m x 2.41m x 2.69m)

Two double glazed windows to front, radiator, wood effect flooring.

Family Bathroom:

7'11" x 5'8" (2.41m x 1.73m)

Obscure double glazed window to front, panel bath with shower over, pedestal hand wash basin, low level W/C, radiator, part tiled walls.

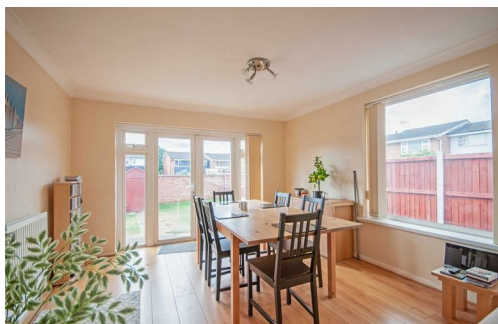
Exterior:

Rear Garden:

Paved patio to immediate rear, gated side access, door to shed, rest laid to lawn.

Frontage & Parking:

Driveway parking to front, rest laid to lawn.



At Hamilton Piers we aim to ensure our particulars are accurate and reliable. However, they do not constitute any offer or contract, nor are they to be taken as statements or representations of fact. No tests have been carried out by us in respect of services, systems or appliances contained in the specification and no guarantee as to their operating ability or efficiency is given (unless stated otherwise).

All measurements are a guide only and, therefore, can be approximated in some cases. If purchasing, fixtures and fittings, apart from those mentioned in the particulars, are to be agreed with the seller. Some particulars, please note, may also be awaiting the seller's approval. If clarification or further information is required, please contact us.

AWARD WINNING SALES AND LETTINGS ACROSS ESSEX

01376 341 141 | 01245 269 777 | 01621 212 450 | 01371 809 500 | 0207 079 1510

