



Wood Street

Chelmsford, CM2 9AU

Freehold
Tax Band: C

Guide Price £325,000



Being sold with NO ONWARD CHAIN is this well presented end terraced home, boasting TWO DOUBLE BEDROOMS, SPACIOUS LOUNGE, separate dining room, re-fitted kitchen, MODERN FAMILY BATHROOM, porch, PRIVATE REAR GARDEN, with potential to extend STP, ideally located within easy access to Chelmsford city centre and mainline train station, contact Hamilton Piers to view.



Wood Street, Chelmsford, CM2 9AU

Ground Floor:

Entrance Porch:

Composite entrance door to front, double glazed window to side, door to lounge, tiled flooring.

Lounge:

13' x 11' (3.96m x 3.35m)

Double glazed sash windows to front, log burner, door to inner hall, radiator, wood effect flooring.

Inner Hall:

Stairs to first floor, door to dining room, wood effect flooring.

Dining Room:

13' x 11' (3.96m x 3.35m)

Double glazed sash window to rear, obscure double glazed window to side, fireplace, door to kitchen, cupboard, radiator, wood effect flooring.

Kitchen:

9'9" x 7'9" (2.97m x 2.36m)

Double glazed window to rear, composite entrance door to side, range of wall and base units, square edge work surfaces with sink inset, integrated dishwasher, space for fridge freezer, washing machine, tumble dryer, part tiled walls, tiled walls.

First Floor:

Landing:

Double glazed window to side, doors to bedroom one, bedroom two, family bathroom.

Bedroom One:

13' x 11' (3.96m x 3.35m)

Double glazed sash window to front, fireplace, radiator, cupboard.

Bedroom Two:

11' x 9'10" (3.35m x 3.00m)

Double glazed sash window to rear, fireplace, cupboard, radiator, wood effect flooring.

Family Bathroom:

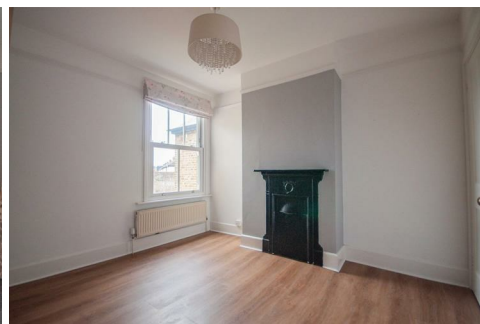
9'10" x 7'6" (3.00m x 2.29m)

Obscure double glazed sash window to rear, free standing bath with shower mixer tap, fully tiled shower cubicle, low level W/C, vanity hand wash basin, tiled walls and flooring.

Exterior:

Rear Garden:

Paved patio to immediate rear, gated side access, path to rear patio area and shed, mature shrubs, rest laid to lawn.



At Hamilton Piers we aim to ensure our particulars are accurate and reliable. However, they do not constitute any offer or contract, nor are they to be taken as statements or representations of fact. No tests have been carried out by us in respect of services, systems or appliances contained in the specification and no guarantee as to their operating ability or efficiency is given (unless stated otherwise).

All measurements are a guide only and, therefore, can be approximated in some cases. If purchasing, fixtures and fittings, apart from those mentioned in the particulars, are to be agreed with the seller. Some particulars, please note, may also be awaiting the seller's approval. If clarification or further information is required, please contact us.

AWARD WINNING SALES AND LETTINGS ACROSS ESSEX

01376 341 141 | 01245 269 777 | 01621 212 450 | 01371 809 500 | 0207 079 1510

