



Stanley Court Stanley Park Road, Carshalton SM5 3JF

Not for marketing purposes INTERNAL USE ONLY

welcome to

Stanley Court Stanley Park Road, Carshalton

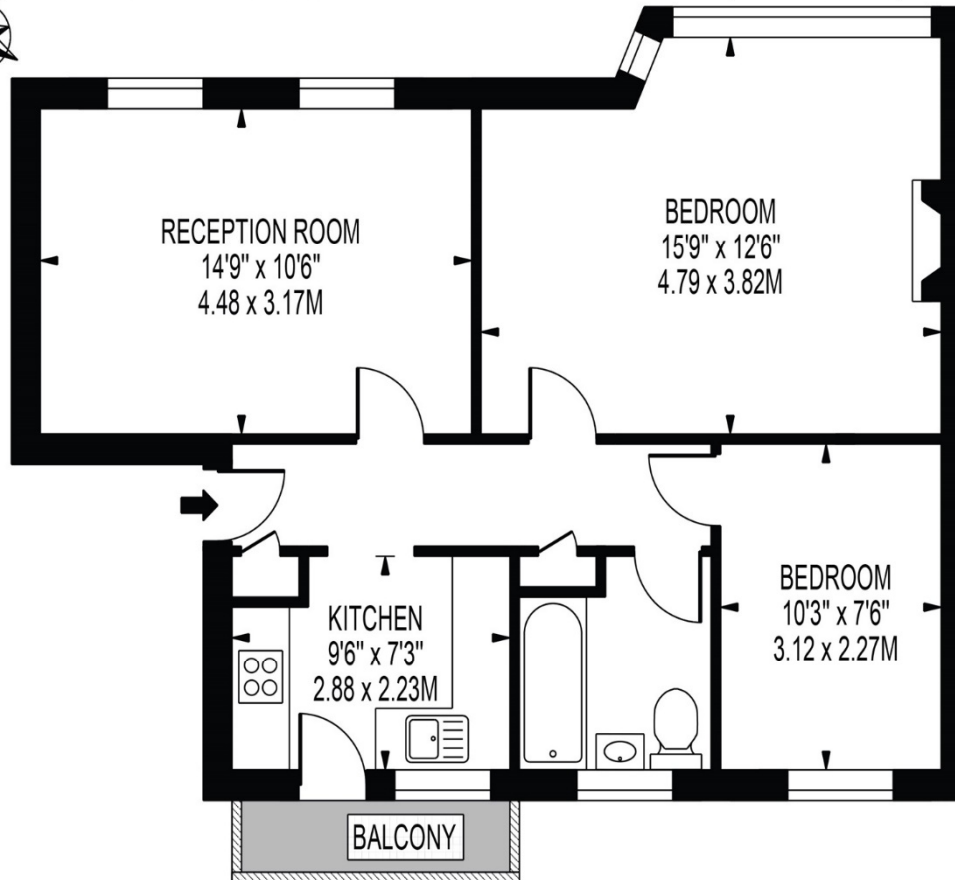
Located within the popular Stanley Court development on Stanley Park Road, this well-presented two-bedroom first floor apartment offers bright, spacious accommodation in a desirable and well-connected part of Carshalton. Benefitting from a separate fully fitted kitchen leading to a balcony overlooking a communal garden and rear stairs, modern bathroom, and a fully insulated loft with standing height that spans the entire footprint of the apartment, this is an ideal property for first-time buyers, downsizers, or investors. The apartment comprises a welcoming entrance hall, a generous reception room with plenty of natural light, a modern, fully fitted kitchen, two well-proportioned bedrooms, and a stylish bathroom. The standout feature is the large, insulated loft space- perfect for storage, with excellent potential for further use (subject to any necessary consents).



STANLEY COURT



APPROXIMATE GROSS INTERNAL FLOOR AREA: 607 SQ FT - 56.64 SQ M



FIRST FLOOR

FOR ILLUSTRATION PURPOSES ONLY

THIS FLOOR PLAN SHOULD BE USED AS A GENERAL OUTLINE FOR GUIDANCE ONLY AND DOES NOT CONSTITUTE IN WHOLE OR IN PART AN OFFER OR CONTRACT.
ANY INTENDING PURCHASER OR LESSEE SHOULD SATISFY THEMSELVES BY INSPECTION, SEARCHES, ENQUIRIES AND FULL SURVEY AS TO THE CORRECTNESS OF EACH STATEMENT.
ANY AREAS, MEASUREMENTS OR DISTANCES QUOTED ARE APPROXIMATE AND SHOULD NOT BE USED TO VALUE A PROPERTY OR BE THE BASIS OF ANY SALE OR LET.