



Coda Residences
6 York Place, SW11

CHESTERTONS





A truly stunning two-bedroom, two-bathroom apartment with gorgeous views of the Thames from the 11th floor. The apartment comes with underfloor heating, a beautiful open plan kitchen, residents gym and 24hr concierge service.

The apartment boasts a Poggenpohl kitchen with Corian worktop and integrated Siemens appliances, bathrooms with porcelain tiles and custom timber veneer vanity units, engineered timber flooring to living areas, Poliform free-standing wardrobes to all master bedrooms and floor to ceiling double-glazed windows.

Further specification includes video door entry system, underfloor heating throughout, comfort cooling to living rooms and master bedrooms and TV points, provision for Sky+ and high-speed broadband and fibre-optic connection to living rooms and master bedrooms.

Coda Residences' prime riverside location offers proximity to charming neighbourhoods, lush green spaces and easy transport connections. Nearby areas include the bustling Northcote Road, Battersea Power Station, Battersea Arts Centre, historic Battersea Park and the pedestrianised Battersea Square. Less than 500m away is Clapham Junction, one of the best connected stations in the city, with easy access to the City, Gatwick airport and other parts of central London.

- River Views
- 11th Floor
- Private Balcony
- High End Furniture
- 24 Hour Concierge
- Resident Gym

£3,900 pcm

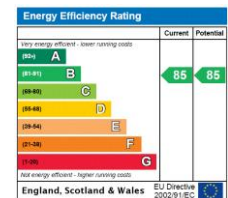
Additional tenant charges apply (fees apply to non-AST tenancies only)

Tenancy Agreement Fee: £300

References per Tenant/Guarantor: £60

Inventory check (approx. £100 – £250 inc. VAT)

chestertons.co.uk/property-to-rent/applicable-fees



Minimum Term: 12 months
Deposit Required: £4,500.00
Local Authority: London Borough of Wandsworth
Council Tax Band: F
EPC Rating: B
Furnished

Chestertons Battersea Park & Nine Elms Lettings

59 Battersea Bridge Road
 London
 SW11 3AU

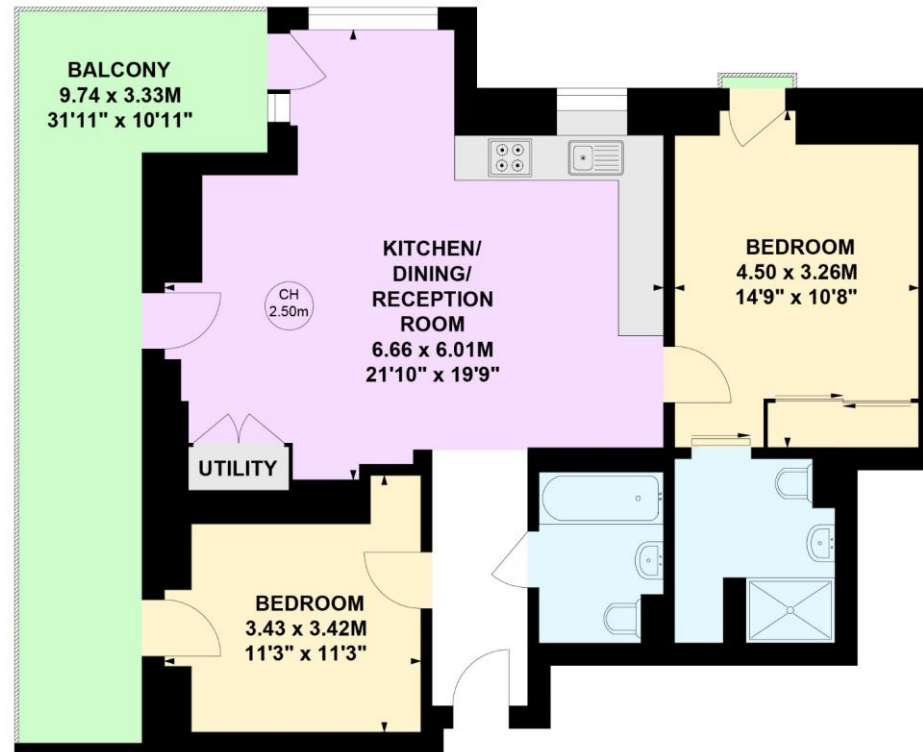
batterseapark@chestertons.co.uk
 02030408269
chestertons.co.uk

Coda Residence, SW11

Approximate gross internal area

72.96 sq m / 785 sq ft

Key :
CH - Ceiling Height



Eleventh Floor

Not to scale, for guidance only and must not be relied upon as a statement of fact.

All measurements and areas are approximate only

Chesterton Global Ltd trading as Chestertons for themselves and for the vendor of this property whose agents they are, give notice that (i) these particulars do not constitute any part of an offer or contract, (ii) all statements contained within these particulars are made without responsibility on the part of Chestertons or the vendor, (iii) whilst made in good faith, none of the statements contained within these particulars are to be relied upon as a statement or representation of fact, (iv) any intending purchasers must satisfy themselves by inspection or otherwise as to the correctness of each of the statements contained within these particulars, (v) the vendor does not make or give either Chestertons or any person in their employment any authority to make or give representation or warranty whatsoever in relation to this property. Wide angle lenses may be used. ©Copyright Chestertons | Chesterton Global Ltd | Registered Office 40 Connaught Street, Hyde Park, London W2 2AB Registered Company Number 05334580.



This paper is
100% recyclable