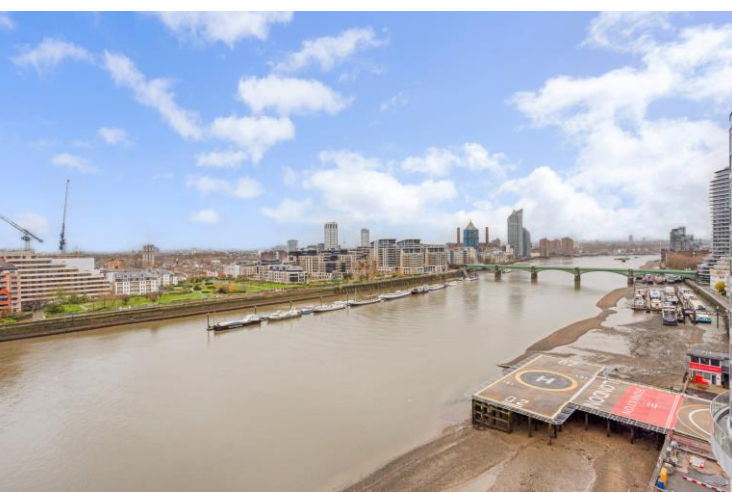




Vicentia Court
Bridges Court Road, SW11





A unique duplex Penthouse apartment with over 1,800sq.ft of internal living space split over the 10th and 11th floor of Vicentia Court. Comprising a semi open-plan reception with a hi-spec, fully integrated kitchen leading onto a substantial wrap around river facing terrace.

Furthermore there are 3 large double bedrooms, all with an en-suite and storage. There is a beautiful feature staircase and a further guest WC.

Vicentia Court is ideally located on the south bank of the River Thames. Nearby, you will find an array of local amenities including cafes, restaurants, shops, and grocery stores, making daily life convenient and accessible. The area is also home to green spaces, including Battersea Park. The nearby Battersea Power Station offers an even more dining, shopping, and entertainment options.

- Penthouse
- River Views
- Concierge
- Secure Building
- Duplex
- 2,000sqft

£6,500 pcm

Additional tenant charges apply (fees apply to non-AST tenancies only)

Tenancy Agreement Fee: £300

References per Tenant/Guarantor: £60

Inventory check (approx. £100 – £250 inc. VAT)

chestertons.co.uk/property-to-rent/applicable-fees

Energy Efficiency Rating		Current	Potential
100-92	A		
81-91	B		
69-80	C	82	82
55-68	D		
39-54	E		
21-38	F		
1-20	G		

Not energy efficient - higher running costs

EU Directive 2002/91/EC

England, Scotland & Wales

Minimum Term: 12 months
Deposit Required: £9,000.00
Local Authority: London Borough of Wandsworth
Council Tax Band: H
EPC Rating: B
Furnished

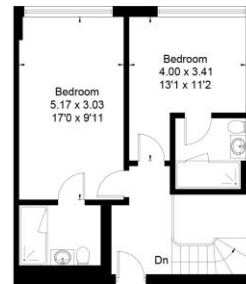
Chestertons Battersea Park & Nine Elms Lettings

59 Battersea Bridge Road
 London
 SW11 3AU

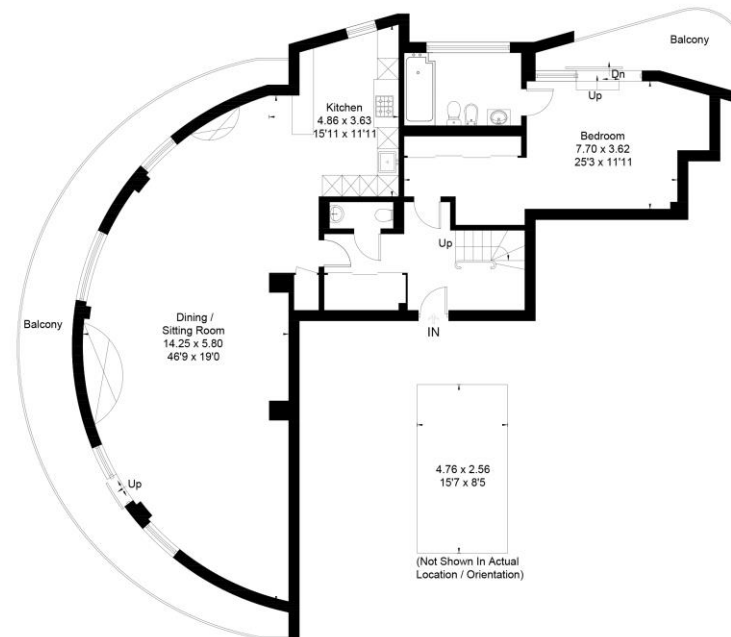
batterseapark@chestertons.co.uk
 02030408269
chestertons.co.uk

VICENTIA COURT, BRIDGES COURT ROAD , SW11

Approximate Floor Area = 175.2 sq m / 1886 sq ft



First Floor



Ground Floor



This floor plan has been drawn in accordance with RICS Property Measurement 2nd edition.
All measurements, including the floor area, are approximate and for illustrative purposes only @djd.london #83161

Chesterton UK Services Limited trading as Chestertons for themselves and for the vendor of this property whose agents they are, give notice that (i) these particulars do not constitute any part of an offer or contract, (ii) all statements contained within these particulars are made without responsibility on the part of Chestertons or the vendor, (iii) whilst made in good faith, none of the statements contained within these particulars are to be relied upon as a statement or representation of fact, (iv) any intending purchasers must satisfy themselves by inspection or otherwise as to the correctness of each of the statements contained within these particulars, (v) the vendor does not make or give either Chestertons or any person in their employment any authority to make or give representation or warranty whatsoever in relation to this property. Wide angle lenses may be used. ©Copyright Chestertons | Chesterton Global Ltd | Registered Office 40 Connaught Street, Hyde Park, London W2 2AB Registered Company Number 05334580.



This paper is
100% recyclable