



Candlemakers Apartments
112 York Road, SW11





Arranged over two floors this stunning apartment has an open plan reception and dining room area with modern integrated kitchen and modern appliances. Further benefiting from a private balcony, there are two spacious double bedrooms, spacious master with en suite bathroom including bath and shower. The development has allocated parking.

Candlemakers is situated on York Road and close to Clapham Junction and both Wandsworth and Battersea Bridge which offer easy access to Fulham and Chelsea.

- 2 Double Bedrooms
- Modern finish throughout
- Split Level
- Allocated Parking

£3,300 pcm

Additional tenant charges apply (fees apply to non-AST tenancies only)

Tenancy Agreement Fee: £300

References per Tenant/Guarantor: £60

Inventory check (approx. £100 – £250 inc. VAT)

chestertons.co.uk/property-to-rent/applicable-fees

Energy Efficiency Rating		
Energy efficient - lower running costs	Current	Potential
A (94-100)		
B (81-93)		
C (69-80)	78	79
D (55-68)		
E (39-54)		
F (21-38)		
G (1-20)		
Not energy efficient - higher running costs		
England, Scotland & Wales EU Directive 2002/91/EC		

Minimum Term: 12 months
Deposit Required: £3,807.69
Local Authority: London Borough of Wandsworth
Council Tax Band: F
EPC Rating: C
Furnished

Chestertons Battersea Park & Nine Elms Lettings

59 Battersea Bridge Road
 London
 SW11 3AU

batterseapark@chestertons.co.uk
 02030408269
chestertons.co.uk

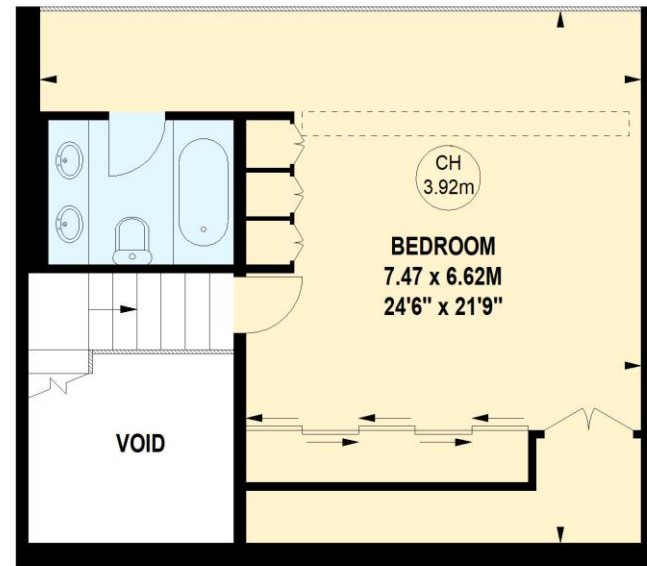


Third Floor

Candlemakers Apartments, SW11

Approximate gross internal area
121.14 sq m / 1304 sq ft
 (Including Void)
Void
5.67 sq m / 61 sq ft

Key :
 CH - Ceiling Height



Fourth Floor

Not to scale, for guidance only and must not be relied upon as a statement of fact.
All measurements and areas are approximate only