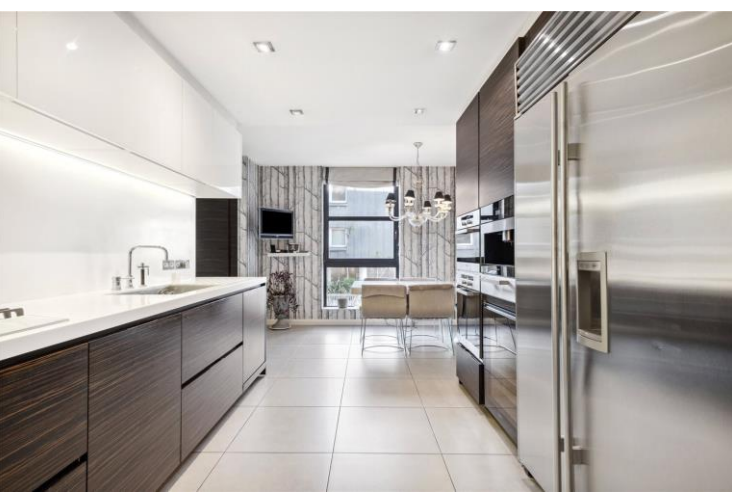




Waterside Point
2 Anhalt Road, SW11

CHESTERTONS





A unique lateral apartment in one of Battersea's most imposing Riverside developments. Comprising 5 bedrooms and 5 bathrooms and 3300 square feet of internal living space and with unparalleled views of the river Thames and Albert Bridge.

Comprising of a large reception room with a large terrace facing the River and Albert Bridge, a separate kitchen with utility room, a vast master bedroom with large en-suite, walk in wardrobes and spacious private terrace, four further double bedrooms and a two further private terraces.

The property further also includes four underground secured parking spaces plus visitors parking, bespoke furniture, LED Lighting and is complete with Bang and Olufsen TV and sound system. Waterside point benefits from a 24 hour concierge service and is moments from both Battersea Park and Chelsea.

- Located in the exclusive Waterside Point Development.
- High Specification 5 bedroom, 6 bedroom lateral apartment.
- Unparalleled views of the river Thames.
- Walking distance to The Kings Road, Battersea Park Station and Queenstown Road Main Line Stations

£17,500 pcm

Additional tenant charges apply (fees apply to non-AST tenancies only)

Tenancy Agreement Fee: £300

References per Tenant/Guarantor: £60

Inventory check (approx. £100 – £250 inc. VAT)

chestertons.co.uk/property-to-rent/applicable-fees

Energy Efficiency Rating		Current	Potential
90-100	A		
81-89	B	84	86
69-80	C		
55-68	D		
39-54	E		
21-38	F		
1-20	G		

Not energy efficient - higher running costs

England, Scotland & Wales EU Directive 2002/91/EC

Minimum Term: 6 months
Deposit Required: £24,230.77
Local Authority: London Borough of Wandsworth
Council Tax Band: H
EPC Rating: B
Furnished

Chestertons Battersea Park & Nine Elms Lettings

59 Battersea Bridge Road

London

SW11 3AU

batterseapark@chestertons.co.uk

02030408269

chestertons.co.uk

Waterside Point

Approximate Gross Internal Area = 3365 sq ft / 312.6 sq m



Not to scale, for guidance only and must not be relied upon as a statement of fact.
All measurements and areas are approximate only and have been prepared in accordance with the current edition of the RICS Code of Measuring Practice.

Chesterton UK Services Limited trading as Chestertons for themselves and for the vendor of this property whose agents they are, give notice that (i) these particulars do not constitute any part of an offer or contract, (ii) all statements contained within these particulars are made without responsibility on the part of Chestertons or the vendor, (iii) whilst made in good faith, none of the statements contained within these particulars are to be relied upon as a statement or representation of fact, (iv) any intending purchasers must satisfy themselves by inspection or otherwise as to the correctness of each of the statements contained within these particulars, (v) the vendor does not make or give either Chestertons or any person in their employment any authority to make or give representation or warranty whatsoever in relation to this property. Wide angle lenses may be used. ©Copyright Chestertons | Chesterton Global Ltd | Registered Office 40 Connaught Street, Hyde Park, London W2 2AB Registered Company Number 05334580.



This paper is 100% recyclable