



# Keybridge Tower

## 1 Exchange Gardens, SW8

£2,990 pcm

A luxurious two bed apartment in a brand new development close to Vauxhall which has recently been finished to the highest of standards, benefits from a 24 hour concierge and includes access to a resident's gym, club lounge and swimming pool and spa.

CHESTERTONS



# Keybridge Tower

## 1 Exchange Gardens, SW8

- Two bedrooms
- Brand new development
- 24 hour concierge
- Swimming pool and gym



A luxurious two bedroom, two bathroom apartment arranged on the 12th floor in a brand new development which has recently been finished to the highest of standards. This stunning property boasts great views of the London skyline, two double bedrooms with fitted storage, two modern bathrooms and open plan kitchen/reception.

Residents of Keybridge Tower will benefit from a 24 hour concierge and access to an onsite gym, club lounge and 15-meter swimming pool and spa.

Located in a new development close to Vauxhall which offers access to National Rail train services to Waterloo and Clapham Junction as

**Tenure:** To be advised  
**Furnished, Part Furnished,**  
 . . . . .

Additional tenant charges apply (fees apply to non-AST tenancies only)  
 Tenancy Agreement Fee: £300  
 References per Tenant/Guarantor: £60  
 Inventory check (approx. £100 – £250 inc. VAT)  
[chestertons.com/property-to-rent/applicable-fees](https://www.chestertons.com/property-to-rent/applicable-fees)

Energy Efficiency Rating		
	Current	Potential
Very energy efficient - lower running costs		
(92+) <b>A</b>		
(81-91) <b>B</b>	87	87
(69-80) <b>C</b>		
(55-68) <b>D</b>		
(39-54) <b>E</b>		
(21-38) <b>F</b>		
(1-20) <b>G</b>		
Not energy efficient - higher running costs		
England, Scotland & Wales	EU Directive 2002/91/EC	

**Chestertons Battersea & Clapham Lettings**

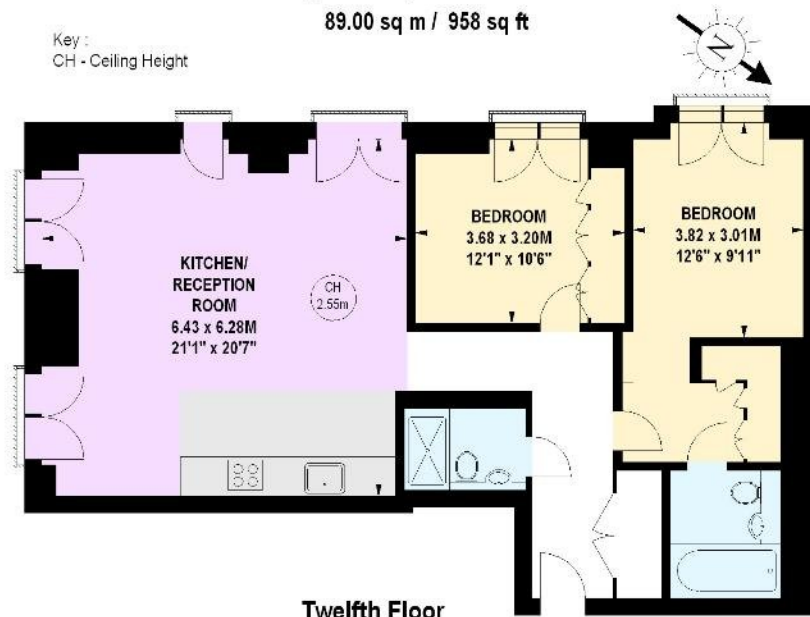
6 Battersea Rise  
 London  
 SW11 1ED  
[lettings.battersearise@chestertons.com](mailto:lettings.battersearise@chestertons.com)  
 02072985630  
[chestertons.com](https://www.chestertons.com)

# Keybridge Tower, SW8

Approximate gross internal area

89.00 sq m / 958 sq ft

Key :  
CH - Ceiling Height



Twelfth Floor

The floor plan is not to scale and measurements and areas shown are approximate and therefore should be used for illustrative purposes only. The plan has been prepared in accordance with the RICS code of Measuring Practice and whilst we have confidence in the information produced, it must not be relied on. If there is any aspect of particular importance, you should carry out or commission your own inspection of the property.  
Copyright of FeaturePRO.