



Damac Tower  
67 Bondway, SW8

CHESTERTONS







A stunning two-bedroom apartment on the 9th floor of this iconic new building in Nine Elms.

Boasting unrivalled dual aspect views from the 9th floor, this property is a real gem. The property has been furnished to an impeccable high standard as seen on the photos. It benefits from a large open plan kitchen living room, two double bedrooms, two bathrooms (one en-suite) and a winter garden.

Residents in Damac Tower benefits from exceptional amenities including a 24 hour concierge, gym, spa, swimming pool, cinema room, games room, kids play area, residents lounge and a large rooftop garden on the 24th floor with near 360 views of London.

Damac Tower is in a superb location with transport links including Vauxhall tube and over-ground station and 24-hour bus routes from Vauxhall bus station. Located moments from the River Thames provides you with easy access to the Thames River walk and the tranquil it provides. Please contact Chestertons for more information and to book a viewing.

- Stunning Views
- Two Bathrooms
- Great Transport Links
- Furnished
- Swimming Pool
- Sauna & Steam room

**£4,500 pcm**

Additional tenant charges apply (fees apply to non-AST tenancies only)

Tenancy Agreement Fee: £300

References per Tenant/Guarantor: £60

Inventory check (approx. £100 – £250 inc. VAT)

[chestertons.co.uk/property-to-rent/applicable-fees](http://chestertons.co.uk/property-to-rent/applicable-fees)

Energy Efficiency Rating		Current	Potential
100-109	A		
81-100	B		
62-81	C	82	82
43-61	D		
25-42	E		
10-24	F		
1-9	G		

Not energy efficient - higher running costs

England, Scotland & Wales EU Directive 2002/91/EC

**Minimum Term:** 12 months  
**Deposit Required:** £6,230.77  
**Local Authority:** Lambeth  
**Council Tax Band:** F  
**EPC Rating:** B  
**Furnished**

**Chestertons Battersea Park & Nine Elms Lettings**

59 Battersea Bridge Road  
 London  
 SW11 3AU

batterseapark@chestertons.co.uk  
 02030408269  
[chestertons.co.uk](http://chestertons.co.uk)

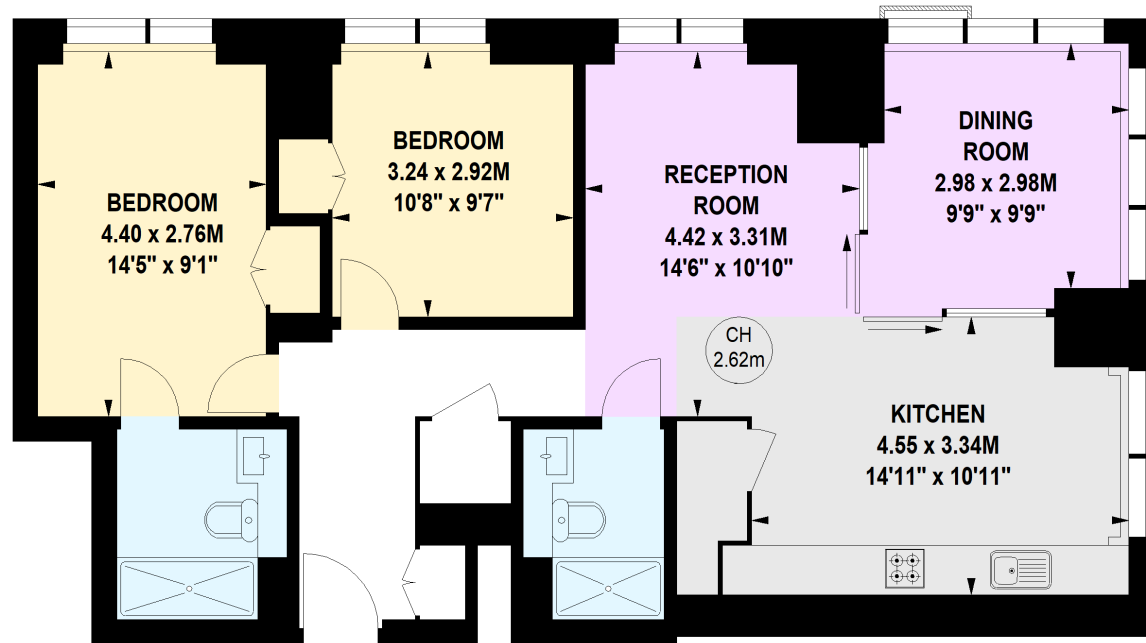
# Damac Tower, Bondway, SW8

Approximate gross internal area

83.89 sq m / 903 sq ft



Key :  
CH - Ceiling Height



## Ninth Floor

**Not to scale, for guidance only and must not be relied upon as a statement of fact.  
All measurements and areas are approximate only**

Chesterton Global Ltd trading as Chestertons for themselves and for the vendor of this property whose agents they are, give notice that (i) these particulars do not constitute any part of an offer or contract, (ii) all statements contained within these particulars are made without responsibility on the part of Chestertons or the vendor, (iii) whilst made in good faith, none of the statements contained within these particulars are to be relied upon as a statement or representation of fact, (iv) any intending purchasers must satisfy themselves by inspection or otherwise as to the correctness of each of the statements contained within these particulars, (v) the vendor does not make or give either Chestertons or any person in their employment any authority to make or give representation or warranty whatsoever in relation to this property. Wide angle lenses may be used. ©Copyright Chestertons | Chesterton Global Ltd | Registered Office 40 Connaught Street, Hyde Park, London W2 2AB Registered Company Number 05334580.



This paper is  
100% recyclable