



# Coda Residences

6 York Place, SW11

£10,833.33 per month  
(£2,500 per week)

SHORT LET. Exquisite sub penthouse apartment encompassing half of the 22nd floor in Coda Residences. The property is excellently furnished to the highest standard and enjoys river views from one of its two balconies.



# Coda Residences

6 York Place, SW11

- 24 Hour Concierge
- Resident Gym
- Meeting Room
- Private Terrace
- River Views
- Sub Penthouse
- Underground Parking
- Exquisitely Furnished



The open plan kitchen / reception room offers striking views of the River Thames through floor to ceiling windows that open up onto a generous secluded balcony. The property contains two double bedrooms with the 3rd bedroom being the perfect spot for a dressing room or office.

The principal bedroom has stunning double aspect views across London with direct access to a large private terrace which is the ultimate sun trap. Stepping back inside the bedroom you can make the most of the elegant en suite bathroom with built in wardrobes before you enter. The apartment also benefits from a modern family bathroom, utility cupboard, and beautifully designed entrance walkway which could be interchangeable as a work space or viewing point.

The apartment comes with a large parking spot with EV charging, a 24 hour concierge, a resident gym, and a residents meeting room.

**Minimum Term:** 1 months  
**Deposit Required:** Dependant on term  
**Local Authority:** London Borough of Wandsworth  
**Council Tax Band:** Covered in rent  
**EPC Rating:** B  
**Furnished**

Energy Efficiency Rating		Current	Potential
Very energy efficient - lower running costs			
(92-100)	A		
(81-91)	B	85	85
(69-80)	C		
(55-68)	D		
(39-54)	E		
(21-38)	F		
(1-20)	G		
Not energy efficient - higher running costs			
England, Scotland & Wales		EU Directive 2002/91/EC	

### Chestertons Battersea Park & Nine Elms Lettings

59 Battersea Bridge Road  
 London  
 SW11 3AU  
 batterseapark@chestertons.co.uk  
 02030408269  
 chestertons.co.uk

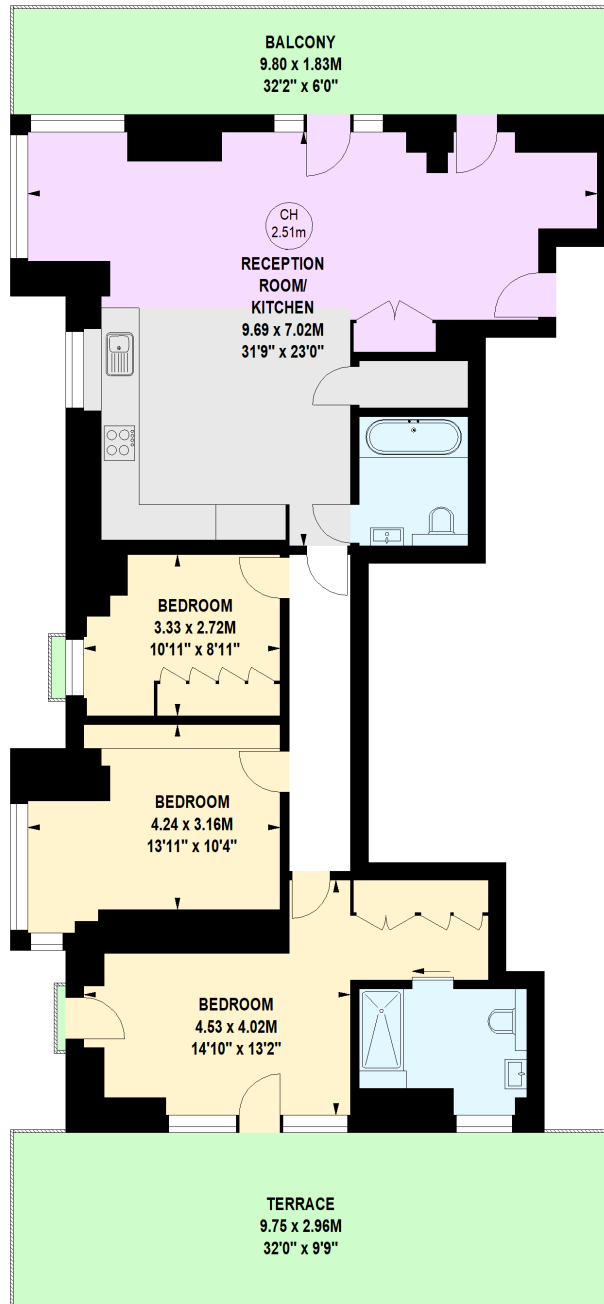
Additional tenant charges apply (fees apply to non-AST tenancies only)  
 Tenancy Agreement Fee: £300  
 References per Tenant/Guarantor: £60  
 Inventory check (approx. £100 – £250 inc. VAT)  
 chestertons.co.uk/property-to-rent/applicable-fees

# Coda Residences, York Place, SW11

Approximate gross internal area

106.56 sq m / 1147 sq ft

Key :  
CH - Ceiling Height



## Second Floor

Not to scale, for guidance only and must not be relied upon as a statement of fact.  
All measurements and areas are approximate only

