



Darwin House  
8 Palmer Road, SW11

CHESTERTONS





A fantastic brand new two bedroom, two bathroom apartment in the sought after Prince Of Wales Development in Battersea.

Darwin House is the newest building to be completed in the Prince of Wales Development and offers luxury living close to Battersea Park and Battersea Power station.

The property is beautifully finished boasting two bedrooms with built in storage, two luxurious bathroom (one is en-suite), and modern fully integrated kitchen with open plan living room.

The property further benefits from a large private balcony, 24 concierge, business lounges, resident sky bar and swimming pool.

- Brand New Apartment
- Two Bathrooms
- Large Balcony
- Swimming Pool
- Resident Lounges
- 24 Hour Concierge

**£4,500 pcm**

Additional tenant charges apply (fees apply to non-AST tenancies only)

Tenancy Agreement Fee: £300

References per Tenant/Guarantor: £60

Inventory check (approx. £100 – £250 inc. VAT)

[chestertons.co.uk/property-to-rent/applicable-fees](http://chestertons.co.uk/property-to-rent/applicable-fees)

Energy Efficiency Rating		Current	Potential
92-100	A		
81-91	B	86	86
69-80	C		
55-68	D		
39-54	E		
21-38	F		
1-20	G		

Not energy efficient - higher running costs

EU Directive 2002/91/EC

England, Scotland & Wales

**Minimum Term:** 12 months  
**Deposit Required:** £6,230.77  
**Local Authority:** London Borough of Wandsworth  
**Council Tax Band:** TBC  
**EPC Rating:** B  
**Furnished**

*Chestertons Battersea Park & Nine Elms Lettings*

59 Battersea Bridge Road

London

SW11 3AU

batterseapark@chestertons.co.uk

02030408269

[chestertons.co.uk](http://chestertons.co.uk)

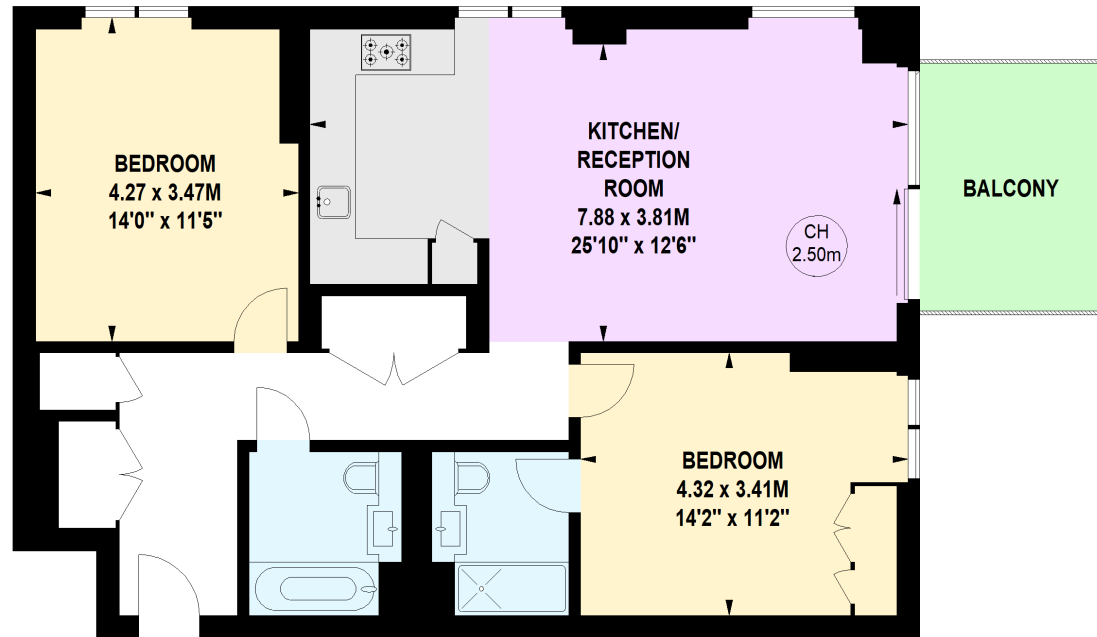
# Darwin House, Palmer Road, SW11

Approximate gross internal area

86.40 sq m / 930 sq ft



Key :  
CH - Ceiling Height



## Seventh Floor

Not to scale, for guidance only and must not be relied upon as a statement of fact.  
All measurements and areas are approximate only

Chesterton Global Ltd trading as Chestertons for themselves and for the vendor of this property whose agents they are, give notice that (i) these particulars do not constitute any part of an offer or contract, (ii) all statements contained within these particulars are made without responsibility on the part of Chestertons or the vendor, (iii) whilst made in good faith, none of the statements contained within these particulars are to be relied upon as a statement or representation of fact, (iv) any intending purchasers must satisfy themselves by inspection or otherwise as to the correctness of each of the statements contained within these particulars, (v) the vendor does not make or give either Chestertons or any person in their employment any authority to make or give representation or warranty whatsoever in relation to this property. Wide angle lenses may be used. ©Copyright Chestertons | Chesterton Global Ltd | Registered Office 40 Connaught Street, Hyde Park, London W2 2AB Registered Company Number 05334580.



This paper is  
100% recyclable