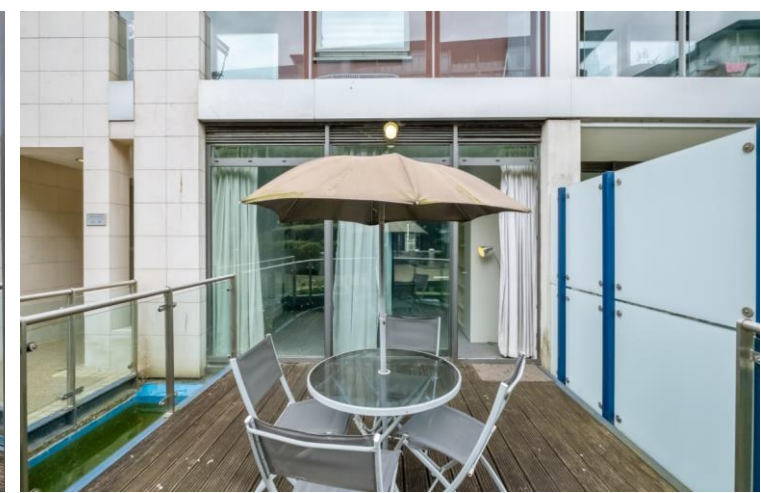




Howard Building
368 Queenstown Road, SW11

CHESTERTONS





A fantastic studio apartment on the ground floor in Chelsea Bridge Wharf with a large private outside space.

This apartment benefits from the peaceful location of this beautiful riverside development, a stone's throw from Battersea Park and the buzz of Battersea Power Station.

The property is located directly opposite Battersea Park and is a short walk away from Queenstown Road and Battersea Park rail stations, running into Waterloo and London Victoria, as well as being within walking distance to the new Northern Line extension at Battersea Power Station.

This area also proves popular due to its' proximity to the King's Road, Sloane Square and Victoria, either on foot or by the regular bus services serving the area.

- Private Terrace on the water
- 24hr Concierge
- Available Now

£1,750 pcm

Additional tenant charges apply (fees apply to non-AST tenancies only)

Tenancy Agreement Fee: £300

References per Tenant/Guarantor: £60

Inventory check (approx. £100 – £250 inc. VAT)

[chestertons.co.uk/property-to-rent/applicable-fees](https://www.chestertons.co.uk/property-to-rent/applicable-fees)

Energy Efficiency Rating		Current	Potential
90-100	A		
81-89	B		
72-80	C	75	82
63-71	D		
54-62	E		
45-53	F		
35-44	G		

Not energy efficient - higher running costs

England, Scotland & Wales EU Directive 2002/91/EC

Minimum Term: 12 months
Deposit Required: £2,019.23
Local Authority: London Borough of Wandsworth
Council Tax Band: E
EPC Rating: C
Furnished, Part Furnished

Chestertons Battersea Park & Nine Elms Lettings

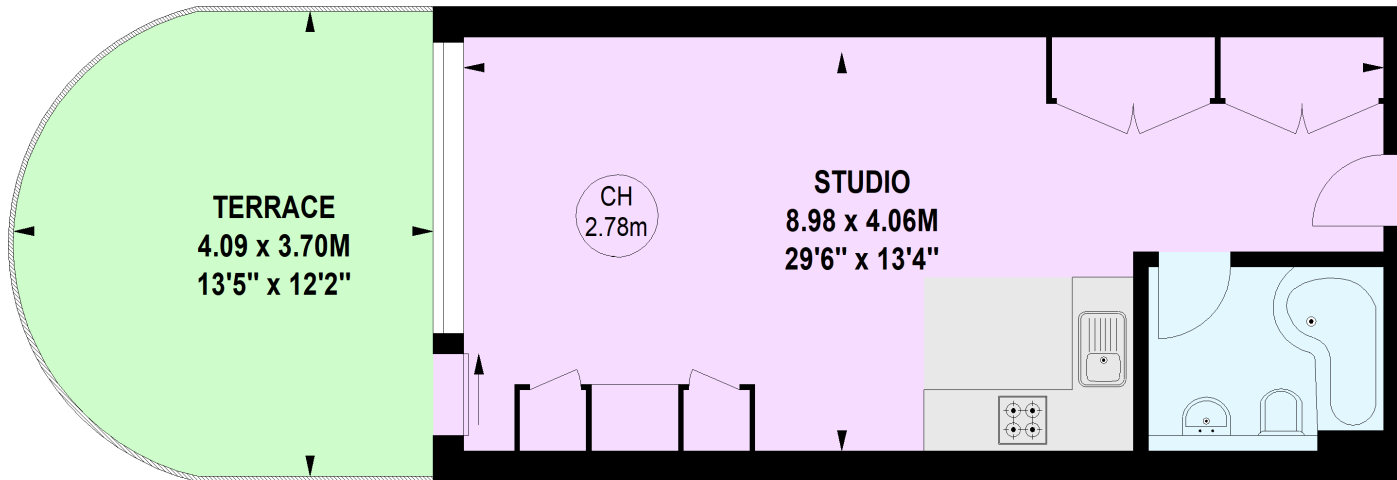
59 Battersea Bridge Road
 London
 SW11 3AU
batterseapark@chestertons.co.uk
 02030408269
[chestertons.co.uk](https://www.chestertons.co.uk)

Howard Building, Queenstown Road, SW11

Approximate gross internal area

36.42 sq m / 392 sq ft

Key :
CH - Ceiling Height



Ground Floor

**Not to scale, for guidance only and must not be relied upon as a statement of fact.
All measurements and areas are approximate only**

