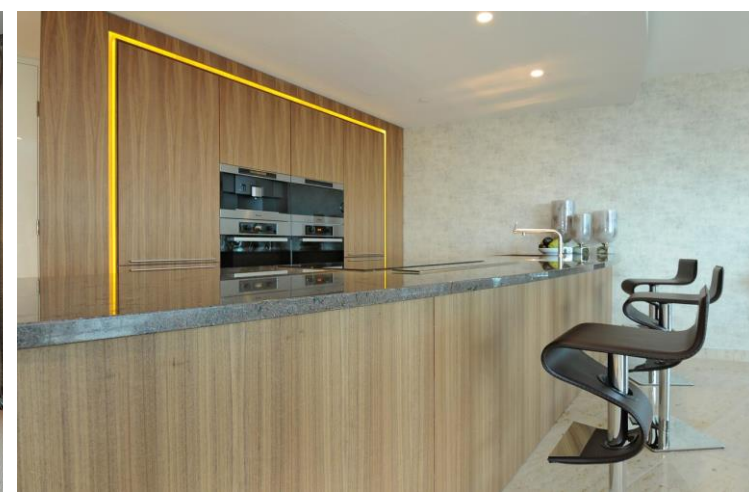




The Tower
1 George Wharf, SW8

CHESTERTONS





A stunning 2 bedroom apartment on the 14th floor of this prestigious building, The Tower.

Accommodation comprises 2 double bedrooms, 1 with en suite and a further luxury bathroom with separate shower. An open plan reception room and kitchen with views across the River Thames and towards Battersea Power Station. The kitchen has fully integrated state of the art Miele appliances including a temperature controlled wine cooler and coffee machine. The apartments media and atmosphere is touch screen controlled and also benefits from floor to ceiling windows, comfort cooling and under floor heating.

Residents of The Tower have access to the on-site facilities which include a cinema room, swimming pool, sauna and spa treatment rooms, gym, business lounge, valet parking and 24 hour concierge.

- A stunning one off building on the banks of the River Thames
- 2 Bed, 2 Bath, 1 Reception
- Stunning City Views
- 24 concierge, swimming pool, gym, sauna etc

£6,716 pcm

Additional tenant charges apply (fees apply to non-AST tenancies only)

Tenancy Agreement Fee: £300

References per Tenant/Guarantor: £60

Inventory check (approx. £100 – £250 inc. VAT)

chestertons.co.uk/property-to-rent/applicable-fees

Energy Efficiency Rating		Current	Potential
90-100	A		
81-89	B		
72-80	C		
63-71	D		
54-62	E		
45-53	F		
35-44	G		
Not energy efficient - higher running costs			
England, Scotland & Wales		82	83
EU Directive 2002/91/EC			

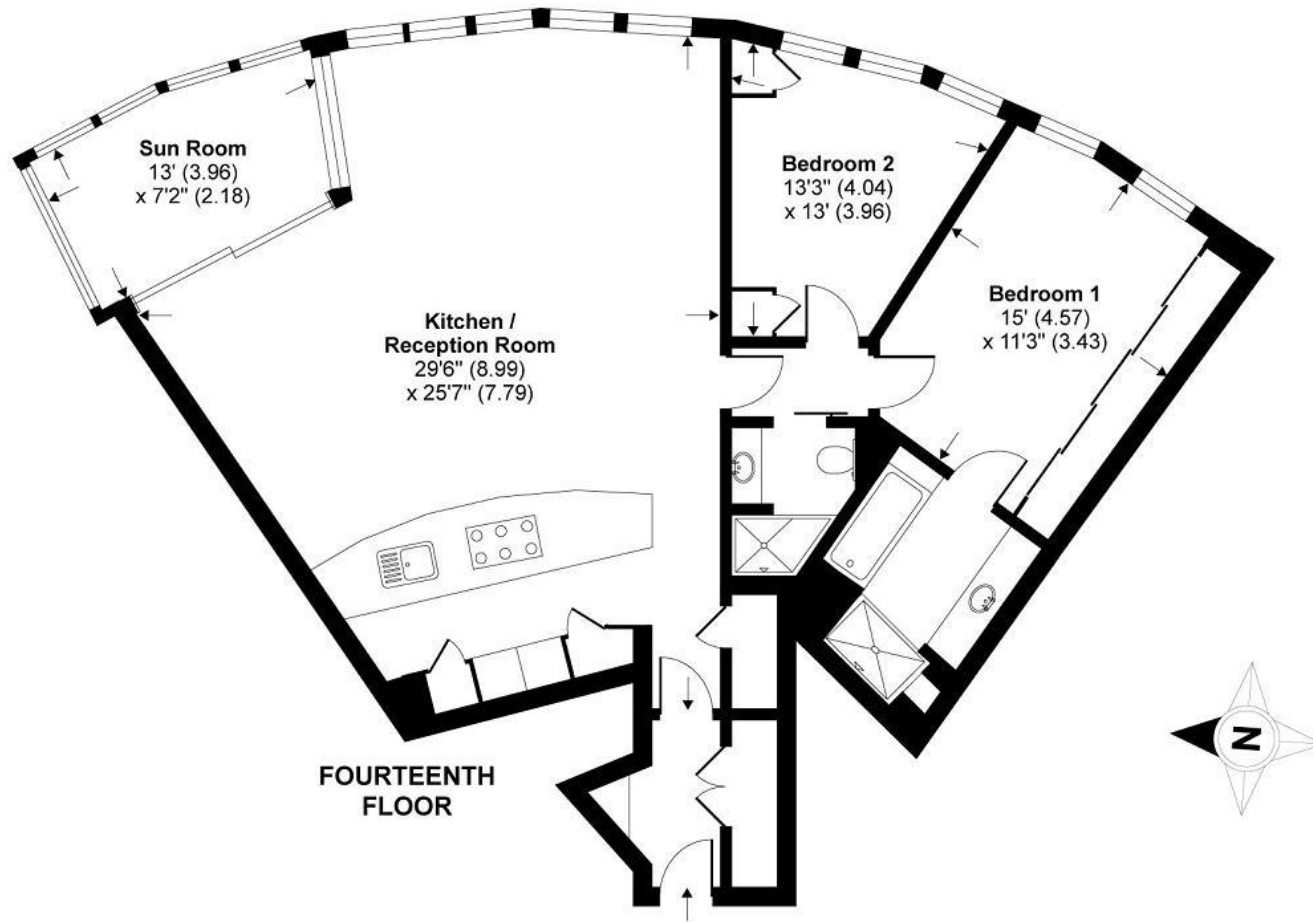
Minimum Term: 12 months
Deposit Required: £9,299.08
Local Authority: London Borough Of Lambeth
Council Tax Band: H
EPC Rating: B
Furnished

Chestertons Battersea Park & Nine Elms Lettings

59 Battersea Bridge Road
 London
 SW11 3AU

batterseapark@chestertons.co.uk
 02030408269
chestertons.co.uk

The Tower, St George Wharf, Wandsworth Road, London, SW8



TOTAL GROSS INTERNAL FLOOR AREA 1052 SQ FT 97.7 SQ METRES

Whilst every attempt has been made to ensure the accuracy of the floor plan contained here, measurements of doors, windows and rooms are approximate and no responsibility is taken for any error, omission or misstatement. These plans are for representation purposes only as defined by RICS Code of Measuring Practice and should be used as such by any prospective purchaser. Specifically no guarantee is given on the total square footage of the property if quoted on this plan. Any figure given is for initial guidance only and should not be relied on as a basis of valuation.

Copyright nichecom.co.uk 2014 Produced for Chesterton Humberts REF : 507898

Chesterton Global Ltd trading as Chestertons for themselves and for the vendor of this property whose agents they are, give notice that (i) these particulars do not constitute any part of an offer or contract, (ii) all statements contained within these particulars are made without responsibility on the part of Chestertons or the vendor, (iii) whilst made in good faith, none of the statements contained within these particulars are to be relied upon as a statement or representation of fact, (iv) any intending purchasers must satisfy themselves by inspection or otherwise as to the correctness of each of the statements contained within these particulars, (v) the vendor does not make or give either Chestertons or any person in their employment any authority to make or give representation or warranty whatsoever in relation to this property. Wide angle lenses may be used. ©Copyright Chestertons | Chesterton Global Ltd | Registered Office 40 Connaught Street, Hyde Park, London W2 2AB Registered Company Number 05334580.



This paper is 100% recyclable