



Molasses House
Clove Hitch Quay, SW11





Spacious and bright two double bedroom apartment with two bathrooms and stunning river views, set within the popular "Plantation Wharf" development.

Boasting two double bedrooms, two bathrooms (one is en-suite) and an open plan living room with a fitted kitchen. Also benefits from wooden flooring, offers unobstructed river views, a lift, concierge and comes on a furnished basis.

Superb riverside location, Clapham Junction train (BR Mainline) is only a short walking distance away and you have Thames Clippers services available. The large green spaces of Battersea Park is only a short walk away.

- Riverside Apartment
- Stunning River Views
- Concierge
- Two Bathrooms

£2,250 pcm

Additional tenant charges apply (fees apply to non-AST tenancies only)

Tenancy Agreement Fee: £300

References per Tenant/Guarantor: £60

Inventory check (approx. £100 – £250 inc. VAT)

chestertons.co.uk/property-to-rent/applicable-fees

Energy Efficiency Rating		Current	Potential
Very energy efficient - lower running costs	A		
(94-100)	B		
(81-93)	C		
(69-80)	D		
(55-68)	E		
(39-54)	F		
(13-38)	G		
Not energy efficient - higher running costs			
EU Directive 2002/91/EC			
England, Scotland & Wales			

Minimum Term: 12 months
Deposit Required: £2,596.15
Local Authority: Wandsworth
Council Tax Band: F
EPC Rating: D
Furnished

Chestertons Battersea Park & Nine Elms Lettings

59 Battersea Bridge Road
 London
 SW11 3AU

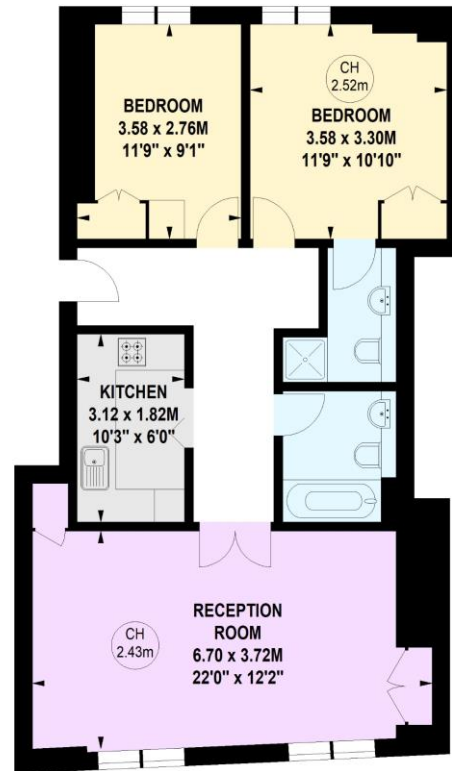
batterseapark@chestertons.co.uk
 02030408269
chestertons.co.uk

Molasses House, SW11

Approximate gross internal area

71.90 sq m / 774 sq ft

Key :
CH - Ceiling Height



Third Floor

Not to scale, for guidance only and must not be relied upon as a statement of fact.
All measurements and areas are approximate only

Chesterton Global Ltd trading as Chestertons for themselves and for the vendor of this property whose agents they are, give notice that (i) these particulars do not constitute any part of an offer or contract, (ii) all statements contained within these particulars are made without responsibility on the part of Chestertons or the vendor, (iii) whilst made in good faith, none of the statements contained within these particulars are to be relied upon as a statement or representation of fact, (iv) any intending purchasers must satisfy themselves by inspection or otherwise as to the correctness of each of the statements contained within these particulars, (v) the vendor does not make or give either Chestertons or any person in their employment any authority to make or give representation or warranty whatsoever in relation to this property. Wide angle lenses may be used. ©Copyright Chestertons | Chesterton Global Ltd | Registered Office 40 Connaught Street, Hyde Park, London W2 2AB Registered Company Number 05334580.



This paper is
100% recyclable