



Altenburg Gardens
London, SW11





(SHORT LET) A spacious and bright studio apartment located on a popular tree-lined residential road moments from Clapham Common boasting a fully fitted open plan kitchen, mezzanine sleeping area, modern bathroom and wooden floors throughout.

- Large Studio
- Communal Garden
- Open Plan Kitchen
- Close to Clapham Common
- All Bills Included
- SHORT LET

£2,750 pcm

Additional tenant charges apply (fees apply to non-AST tenancies only)

Tenancy Agreement Fee: £300

References per Tenant/Guarantor: £60

Inventory check (approx. £100 – £250 inc. VAT)

chestertons.co.uk/property-to-rent/applicable-fees

Minimum Term: 3 months
Deposit Required: £3,173.08
Local Authority: London Borough of Wandsworth
Council Tax Band: C
EPC Rating: D
Furnished

Chestertons Battersea Park & Nine Elms Lettings

59 Battersea Bridge Road
London
SW11 3AU

batterseapark@chestertons.co.uk

02030408269

chestertons.co.uk

Altenburg Gardens, SW11

Approximate gross internal area

41.99 sq m / 452 sq ft

(Including Mezzanine & Storage)

Approximate Storage area

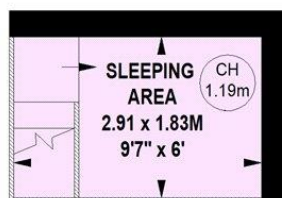
3.07 sq m / 33 sq ft

Approximate Mezzanine area

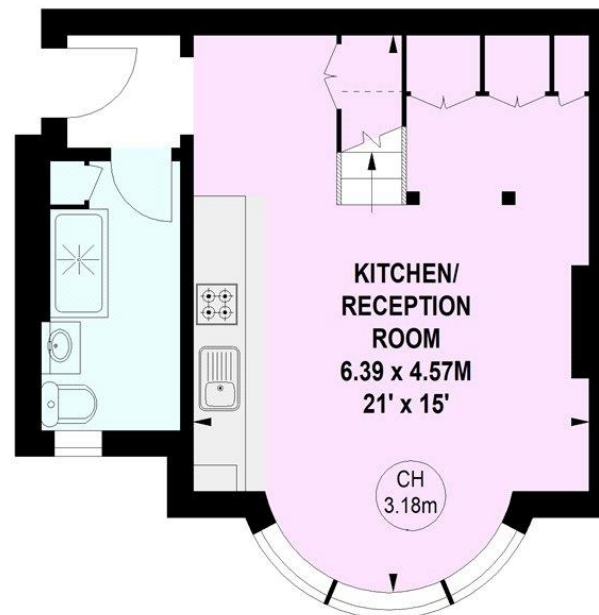
5.30 sq m / 57 sq ft

Key :

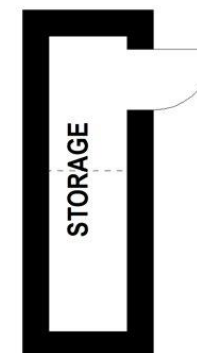
CH - Ceiling Height



Mezzanine



Raised Ground Floor



Not to scale, for guidance only and must not be relied upon as a statement of fact.
All measurements and areas are approximate only

