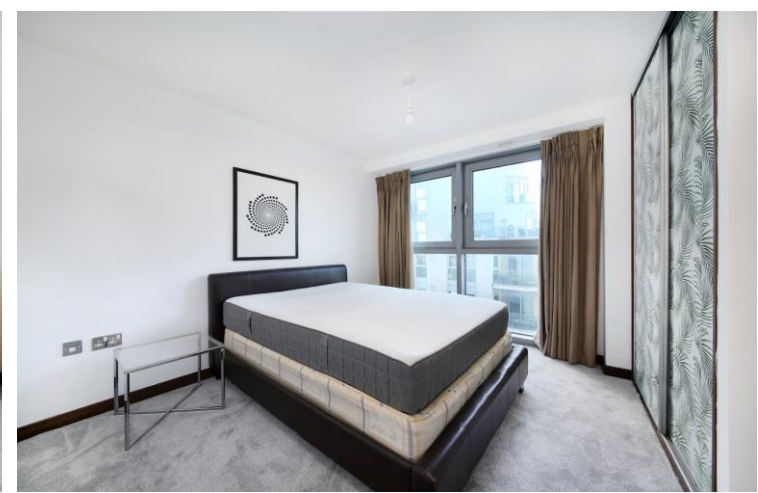




Altura Tower  
Bridges Court Road, SW11







This bright and airy two bedroom, two-bathroom apartment is located on the 8th floor of the award-winning Bridges Wharf development.

The accommodation comprises of an open plan living room and kitchen that has built in appliances, great storage and worktop space. The two bedrooms are both double rooms, the master benefits from built in storage and en-suite shower room. The apartment is completed with a modern family bathroom and storage cupboard in the hallway. floor to ceiling windows flood the apartment with huge amounts of natural light, residents can also enjoy views of the river Thames from the well-appointed private balcony.

A rare addition that this apartment can boast is having two private parking spaces in the underground carpark. The development also benefits from having a secure entry system, 24-hour concierge and well-maintained communal gardens.

Location of the development is fantastic, with the Thames path just on your doorstep, Wandsworth and Battersea Bridges are close to hand for access over the river. Transport is also close at hand with the river taxi a short walk away at St Mary's Pier providing waterborne access to the city. Clapham Junction is just 0.6 miles away also providing mainline access to the centre of London and the wider country.

- Two bedrooms
- Riverside views
- Private Balcony
- Two Parking Spaces
- Chain Free

Asking Price £525,000

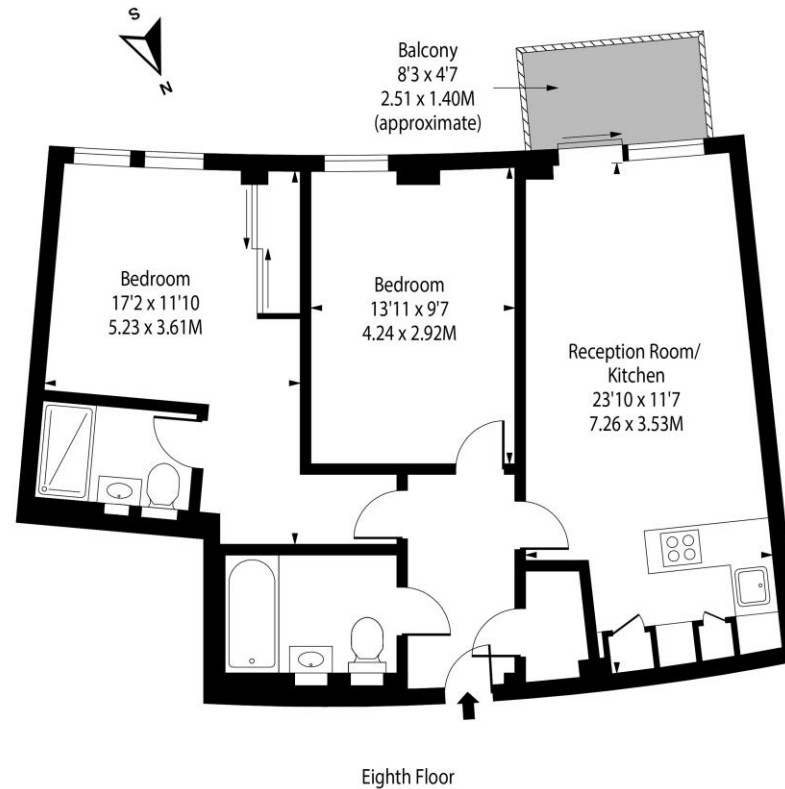
Score	Energy rating	Current	Potential
92+	A		
81-91	B		
69-80	C	73 C	76 C
55-68	D		
39-54	E		
21-38	F		
1-20	G		

**Tenure:** Leasehold 131 years  
**Service Charge:** £5790  
**Ground Rent:** £300  
**Local Authority:** Wandsworth Council  
**Council Tax Band:** E

*Chestertons Battersea Park & Nine Elms Sales*

62-64 Battersea Bridge Road  
 London  
 SW11 3AG  
 batterseapark@chestertons.co.uk  
 0203 040 8700  
 chestertons.co.uk

## Altura Court, SW11



Approx Gross Internal Area **716 Sq Ft - 66.52 Sq M**

Includes Limited Use Area - 14 Sq Ft  
 Drawn in Accordance with IPMS 3B: Residential  
 Illustration For Identification Purposes Only - Not to Scale  
[www.homespacestudio.co.uk](http://www.homespacestudio.co.uk) - Ref. No. 53819



Chesterton UK Services Limited trading as Chestertons for themselves and for the vendor of this property whose agents they are, give notice that (i) these particulars do not constitute any part of an offer or contract, (ii) all statements contained within these particulars are made without responsibility on the part of Chestertons or the vendor, (iii) whilst made in good faith, none of the statements contained within these particulars are to be relied upon as a statement or representation of fact, (iv) any intending purchasers must satisfy themselves by inspection or otherwise as to the correctness of each of the statements contained within these particulars, (v) the vendor does not make or give either Chestertons or any person in their employment any authority to make or give representation or warranty whatsoever in relation to this property. Wide angle lenses may be used. ©Copyright Chestertons | Chesterton UK Services Limited | Registered Office 40 Connaught Street, Hyde Park, London W2 2AB Registered Company Number 05334580.



This paper is  
100% recyclable