



Viridian Apartments
75 Battersea Park Road, SW8

CHESTERTONS





Chestertons are delighted to offer to market a modern two bedroom two bathroom apartment. Set across 619 sq ft on the first floor, located within the Viridian Apartments development and moments from Battersea Power Station and the riverside.

This generous apartment is bright and airy, with a large private balcony set off the open plan reception space and fully fitted kitchen. Both bedrooms comfortably fit double beds, the main bedroom also benefits from an ensuite shower. Off the corridor is a modern family bathroom and ample storage spaces.

The property also includes 24hour concierge, access to a residents gym, communal gardens and roof terraces with city skyline views.

- Two bedroom apartment
- Large private balcony
- Good condition throughout
- 24-Hour Concierge and residents Gym
- Communal gardens and roof terrace with city skyline views

Asking Price £600,000

Energy Efficiency Rating		Current	Potential
Very energy efficient - lower running costs			
(92-100) A		82	82
(81-91) B			
(69-80) C			
(55-68) D			
(49-54) E			
(35-39) F			
(1-28) G			
Not energy efficient - higher running costs			
England, Scotland & Wales		EU Directive 2002/91/EC	

Tenure: Leasehold 137 years 10 months

Service Charge: £0

Ground Rent: £0

Local Authority: London Borough of Wandsworth

Council Tax Band: E

Chestertons Battersea Park & Nine Elms Sales

59 Battersea Bridge Road

London

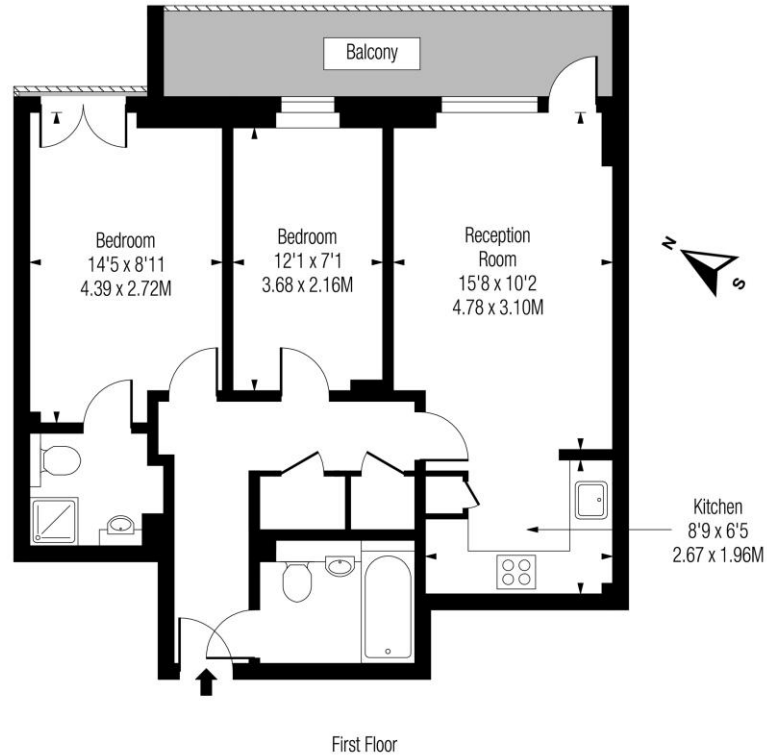
SW11 3AU

batterseapark@chestertons.co.uk

0203 040 8700

chestertons.co.uk

Viridian Apartments, SW8



Approx Gross Internal Area

619 Sq Ft - 57.51 Sq M

Includes Limited Use Area - 12 Sq Ft
 Drawn in accordance with IPMS 3B: Residential
 Illustration For Identification Purposes Only - Not to Scale
www.homespacestudio.co.uk - Ref. No. 51757



Chesterton UK Services Limited trading as Chestertons for themselves and for the vendor of this property whose agents they are, give notice that (i) these particulars do not constitute any part of an offer or contract, (ii) all statements contained within these particulars are made without responsibility on the part of Chestertons or the vendor, (iii) whilst made in good faith, none of the statements contained within these particulars are to be relied upon as a statement or representation of fact, (iv) any intending purchasers must satisfy themselves by inspection or otherwise as to the correctness of each of the statements contained within these particulars, (v) the vendor does not make or give either Chestertons or any person in their employment any authority to make or give representation or warranty whatsoever in relation to this property. Wide angle lenses may be used. ©Copyright Chestertons | Chesterton UK Services Limited | Registered Office 40 Connaught Street, Hyde Park, London W2 2AB Registered Company Number 05334580.



This paper is
100% recyclable