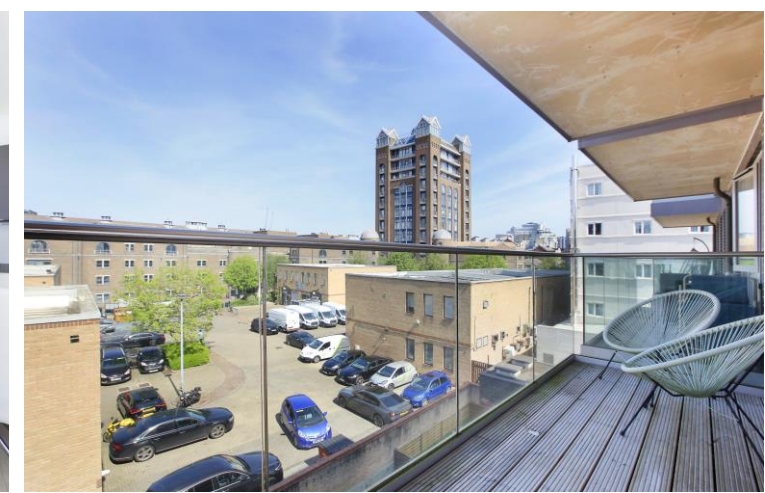




Constance Court
10 Chatfield Road, SW11

CHESTERTONS





We are proud to introduce to the market a modern third floor two-bedroom, two-bathroom apartment located in a recently built secure development within moments of the River Thames.

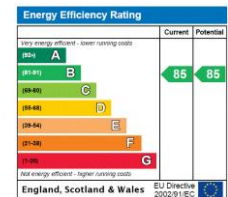
The immaculately presented and well-balanced accommodation of 845 Sq. Ft benefits from generously proportioned rooms and a large west-facing balcony.

Enjoying a bright open plan reception space featuring a modern fitted kitchen with under cabinet LED lighting, beautiful flooring, and ample space to relax and dine. The principal bedroom is of a good size with fitted storage and en-suite shower room, with a further good sized-double bedroom and family bathroom suite, along with additional storage accessed from the entrance hallway.

Constance Court is a modern recently build development benefiting from secure entrance, bike storage, lift access, communal area and within a short walk of far-reaching transport links at Clapham Junction mainline station and Wandsworth Town station.

- Within moments of the River Thames
- Open plan reception room with large windows and stylish kitchen
- Master bedroom with en-suite and access to balcony
- Second bedroom and modern bathroom suite
- Good sized west facing balcony
- Secure entrance, bike storage, lift access and communal areas

Guide Price £600,000

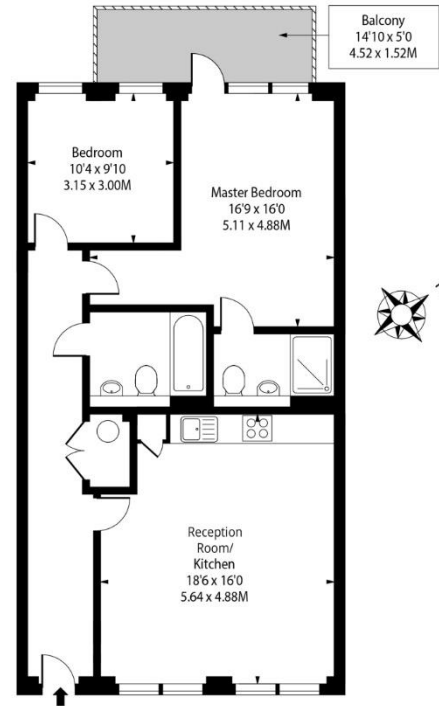


Tenure: Leasehold 993 years 11 months
Service Charge: £2810.62 includes Reserve Fund contribution
Ground Rent: £450
Local Authority: London Borough of Wandsworth
Council Tax Band: E

Chestertons Battersea Park & Nine Elms Sales

59 Battersea Bridge Road
 London
 SW11 3AU
 batterseapark@chestertons.co.uk
 0203 040 8700
 chestertons.co.uk

Constance Court, SW11



Third Floor

Approx Gross Internal Area **845 Sq Ft - 78.50 Sq M**

Drawn in accordance with IPMS 3B: Residential

For Illustration Purposes Only - Not to Scale

Ref. No. 49787

