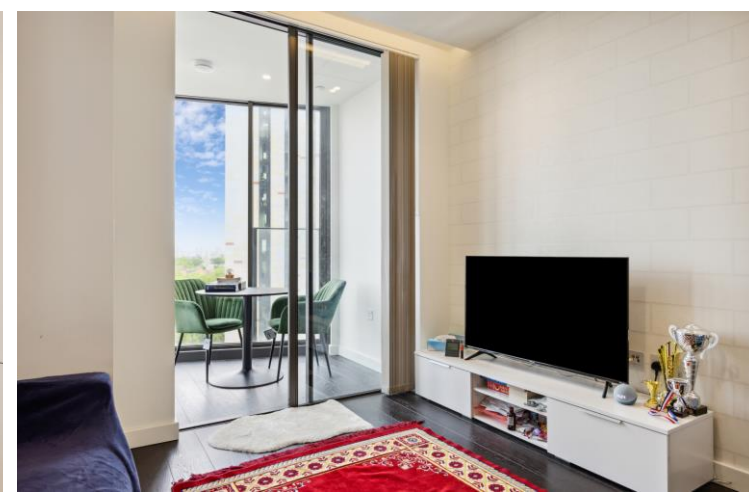




Damac Tower  
Bond Way, SW8

CHESTERTONS







DAMAC Tower Nine Elms London is nestled between Vauxhall and Battersea, where a multi-billion pound investment is dramatically transforming the area into an ultra-modern residential and internationally significant business district, set to become a new centre for arts and culture in the capital.

Asking Price £710,000

Energy Efficiency Rating		Current	Potential
100-90	A		
81-90	B	81	81
69-80	C		
55-68	D		
39-54	E		
21-38	F		
1-20	G		

Not energy efficient - higher running costs

EU Directive 2002/91/EC

England, Scotland & Wales

**Tenure:** Leasehold  
**Service Charge:** £0  
**Ground Rent:** £0  
**Local Authority:** London Borough Of Lambeth  
**Council Tax Band:** E

*Chestertons Battersea Park & Nine Elms Sales*

59 Battersea Bridge Road  
London  
SW11 3AU  
batterseapark@chestertons.co.uk  
0203 040 8700  
chestertons.co.uk

Chesterton UK Services Limited trading as Chestertons for themselves and for the vendor of this property whose agents they are, give notice that (i) these particulars do not constitute any part of an offer or contract, (ii) all statements contained within these particulars are made without responsibility on the part of Chestertons or the vendor, (iii) whilst made in good faith, none of the statements contained within these particulars are to be relied upon as a statement or representation of fact, (iv) any intending purchasers must satisfy themselves by inspection or otherwise as to the correctness of each of the statements contained within these particulars, (v) the vendor does not make or give either Chestertons or any person in their employment any authority to make or give representation or warranty whatsoever in relation to this property. Wide angle lenses may be used. ©Copyright Chestertons | Chesterton UK Services Limited | Registered Office 40 Connaught Street, Hyde Park, London W2 2AB Registered Company Number 05334580.



This paper is  
100% recyclable