



Damac Tower
Bond Way, SW8

CHESTERTONS





DAMAC Tower Nine Elms London is nestled between Vauxhall and Battersea, where a multi-billion-pound investment is dramatically transforming the area into an ultra-modern residential and internationally significant business district, set to become a new centre for arts and culture in the capital.

Asking Price £1,127,000

Energy Efficiency Rating		Current	Potential
Very energy efficient - lower running costs			
90-100	A		
81-90	B	83	83
69-80	C		
55-68	D		
49-54	E		
41-48	F		
31-40	G		
Not energy efficient - higher running costs			
England, Scotland & Wales		EU Directive 2002/91/EC	

Tenure: Leasehold
Service Charge: TBC
Ground Rent: TBC
Local Authority: London Borough Of Lambeth
Council Tax Band: F

Chestertons Battersea Park & Nine Elms Sales

59 Battersea Bridge Road
 London
 SW11 3AU

batterseapark@chestertons.co.uk

0203 040 8700

chestertons.co.uk

Damac Tower, SW8

Approximate gross internal area

85.00 sq m / 915 sq ft

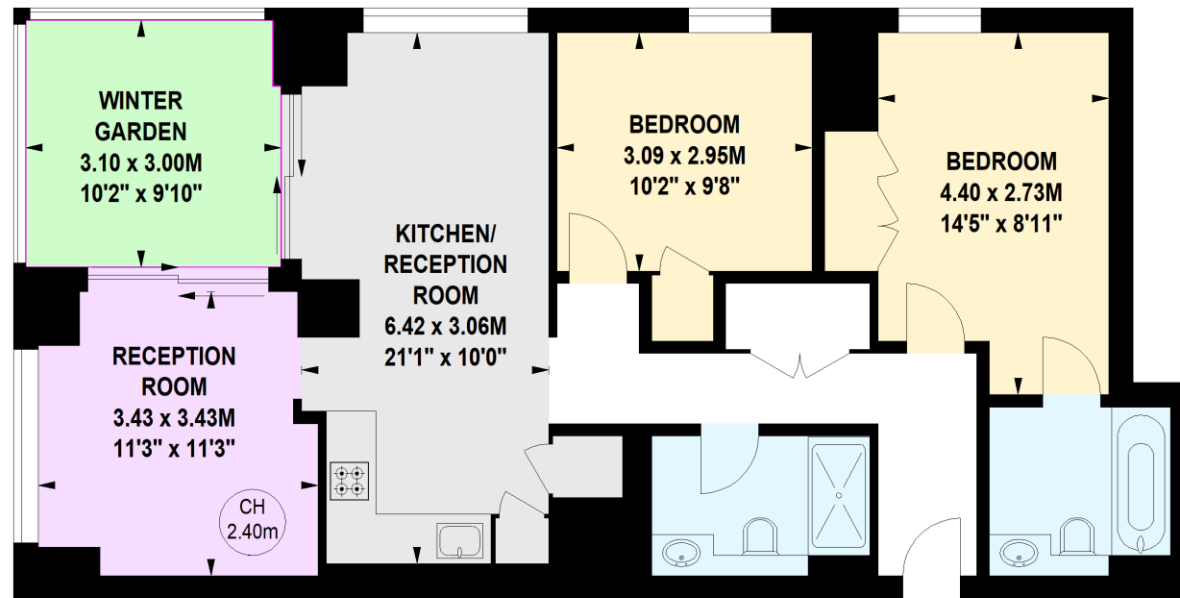
(Including Winter Garden)

Winter Garden

9.20 sq m / 99 sq ft

Key :

CH - Ceiling Height



Ninth Floor

Not to scale, for guidance only and must not be relied upon as a statement of fact.

All measurements and areas are approximate only

Chesterton UK Services Limited trading as Chestertons for themselves and for the vendor of this property whose agents they are, give notice that (i) these particulars do not constitute any part of an offer or contract, (ii) all statements contained within these particulars are made without responsibility on the part of Chestertons or the vendor, (iii) whilst made in good faith, none of the statements contained within these particulars are to be relied upon as a statement or representation of fact, (iv) any intending purchasers must satisfy themselves by inspection or otherwise as to the correctness of each of the statements contained within these particulars, (v) the vendor does not make or give either Chestertons or any person in their employment any authority to make or give representation or warranty whatsoever in relation to this property. Wide angle lenses may be used. ©Copyright Chestertons | Chesterton UK Services Limited | Registered Office 40 Connaught Street, Hyde Park, London W2 2AB Registered Company Number 05334580.



This paper is
100% recyclable