



Dorset Road
London, SW8

CHESTERTONS





Nestled on the tranquil Dorset Road in Stockwell, SW8, this charming one-bedroom garden flat offers a peaceful retreat in the heart of the city. Step inside to discover a welcoming living space flooded with natural light, creating an inviting ambiance for relaxation or entertaining.

The open-plan layout seamlessly integrates the living area with the well-appointed kitchen, providing a functional and stylish space for everyday living. The kitchen features modern amenities and ample storage, making meal preparation a joy.

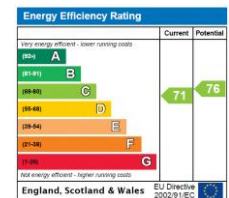
The bedroom offers a comfortable haven for rest and rejuvenation, with soft neutral tones and ample natural light creating a serene atmosphere. A large window overlooks the private garden, offering a delightful view and a connection to nature.

Outside, the private garden provides a tranquil escape from urban life, with lush greenery and a serene atmosphere perfect for unwinding after a long day.

This garden flat offers easy access to local amenities, transportation links, and green spaces, ensuring a convenient and enjoyable lifestyle.

- Charming one-bedroom garden flat located on Dorset Road in Stockwell, SW8.
- Open-plan living area seamlessly connects to a well-appointed kitchen, ideal for both relaxation and entertaining.
- Tranquil bedroom offers a serene atmosphere with ample natural light and views of the private garden.
- Private garden provides a peaceful escape from city life, surrounded by lush greenery.
- Conveniently located with easy access to local amenities, transportation links, and green spaces for a convenient lifestyle.

Asking Price £550,000



Tenure: Share of Freehold 989 years 5 months
Service Charge: £0
Ground Rent: £0
Local Authority: London Borough Of Lambeth
Council Tax Band: C

Chestertons Battersea Park & Nine Elms Sales

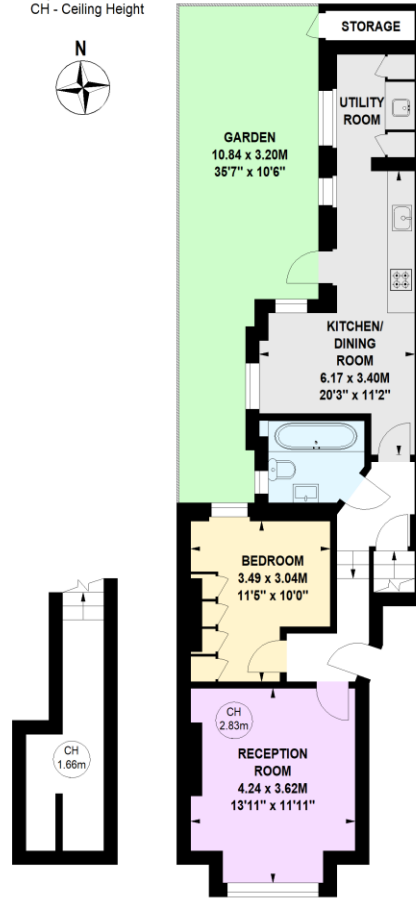
59 Battersea Bridge Road
 London
 SW11 3AU
 batterseapark@chestertons.co.uk
 0203 040 8700
 chestertons.co.uk

Dorset Road, SW8

Approximate gross internal area

61.97 sq m / 667 sq ft

Key :
CH - Ceiling Height



Cellar

Ground Floor

Not to scale, for guidance only and must not be relied upon as a statement of fact.
All measurements and areas are approximate only

Chesterton Global Ltd trading as Chestertons for themselves and for the vendor of this property whose agents they are, give notice that (i) these particulars do not constitute any part of an offer or contract, (ii) all statements contained within these particulars are made without responsibility on the part of Chestertons or the vendor, (iii) whilst made in good faith, none of the statements contained within these particulars are to be relied upon as a statement or representation of fact, (iv) any intending purchasers must satisfy themselves by inspection or otherwise as to the correctness of each of the statements contained within these particulars, (v) the vendor does not make or give either Chestertons or any person in their employment any authority to make or give representation or warranty whatsoever in relation to this property. Wide angle lenses may be used. ©Copyright Chestertons | Chesterton Global Ltd | Registered Office 40 Connaught Street, Hyde Park, London W2 2AB Registered Company Number 05334580.



This paper is
100% recyclable