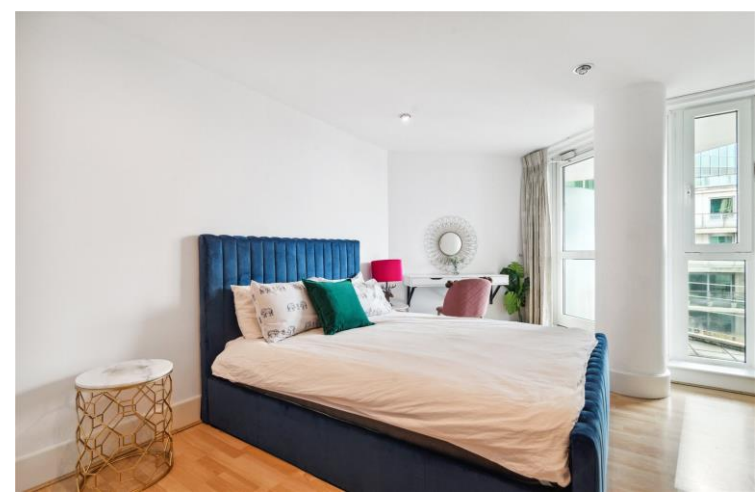




Bridge House
18 St. George Wharf, SW8





Set within the renowned St George Wharf development this two bedroom apartment has breath taking views and a stunning roof terrace.

The large, light and bright living space has a separate dining area with all aspect of the room offering a wonderful river view. This leads out onto a large (1400sqft) roof terrace with a perspective up and down the river including the sights of the city, the London Eye and Houses of Parliament.

Two bedrooms (one ensuite), bathroom and kitchen complete this fabulous apartment which has ample storage and is presented in fantastic order.

Further benefits of St. George Wharf include a 24-hour concierge, access to a gym (separate fee) and numerous other amenities on the complex such as pubs, restaurants, dry cleaners and a dentist.

In addition, St George Wharf is located in Zone 1 in close proximity to Vauxhall Underground Station which provides access to the Victoria Line, and Vauxhall Transport Hub providing access to the river boat services.

- Stunning Roof Terrace
- Breath taking views up and down the river
- Iconic landmarks in sight including the Houses of Parliament & London Eye
- Superb location on the river with great connections

Asking Price £1,875,000

Energy Efficiency Rating		
Energy efficient - lower running costs	Current	Potential
90-100 A		
81-90 B		
72-81 C		
63-72 D		
54-63 E		
45-54 F		
35-45 G		
Not energy efficient - higher running costs		
England, Scotland & Wales	EU Directive 2002/91/EC	

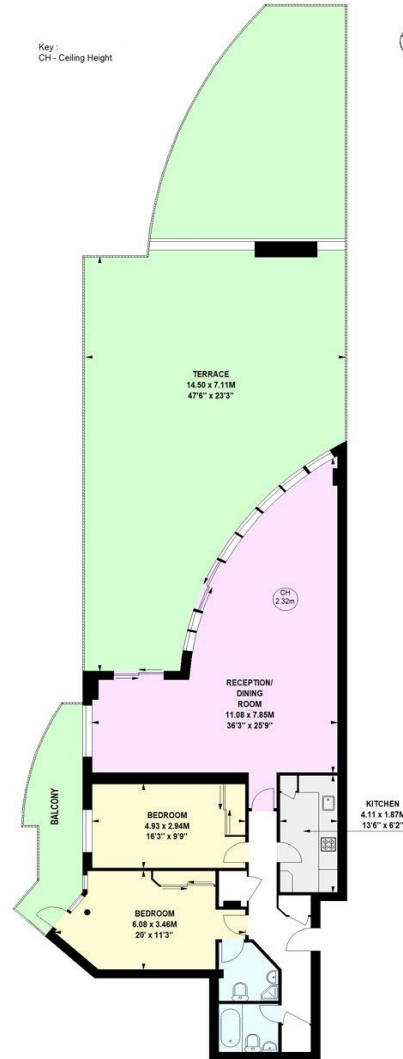
Tenure: Leasehold 974 years
Service Charge: £4500
Ground Rent: £350
Local Authority: Lambeth
Council Tax Band: G

Chestertons Battersea Park & Nine Elms Sales

59 Battersea Bridge Road
 London
 SW11 3AU
 batterseapark@chestertons.co.uk
 0203 040 8700
 chestertons.co.uk

**Bridge House,
St George's Wharf, SW8**
Approximate gross internal area
113.25 sq m / 1219 sq ft

Key :
CH - Ceiling Height



Ninth Floor

Not to scale, for guidance only and must not be relied upon as a statement of fact.
All measurements and areas are approximate only

Chesterton Global Ltd trading as Chestertons for themselves and for the vendor of this property whose agents they are, give notice that (i) these particulars do not constitute any part of an offer or contract, (ii) all statements contained within these particulars are made without responsibility on the part of Chestertons or the vendor, (iii) whilst made in good faith, none of the statements contained within these particulars are to be relied upon as a statement or representation of fact, (iv) any intending purchasers must satisfy themselves by inspection or otherwise as to the correctness of each of the statements contained within these particulars, (v) the vendor does not make or give either Chestertons or any person in their employment any authority to make or give representation or warranty whatsoever in relation to this property. Wide angle lenses may be used. ©Copyright Chestertons | Chesterton Global Ltd | Registered Office 40 Connaught Street, Hyde Park, London W2 2AB Registered Company Number 05334580.



This paper is
100% recyclable