

Darwin Close, Medbourne, MK5 6FF
Offers in the Region of £269,950 Leasehold



Rarely available....a three bedroom top floor apartment with great views over Milton Keynes and with the added bonus of a tandem garage. Situated on the sought after western side of Milton Keynes and offered for sale with no above chain. A great apartment in a great area with Medbourne Pavilion and Shenley Wood and popular local schools just a short walk away. The property offers an open plan lounge/dining/kitchen area, three good size bedrooms with en-suite to the master, a four piece family bathroom and tandem garage with workshop area. Outside there is a communal garden and parking.



Darwin Close

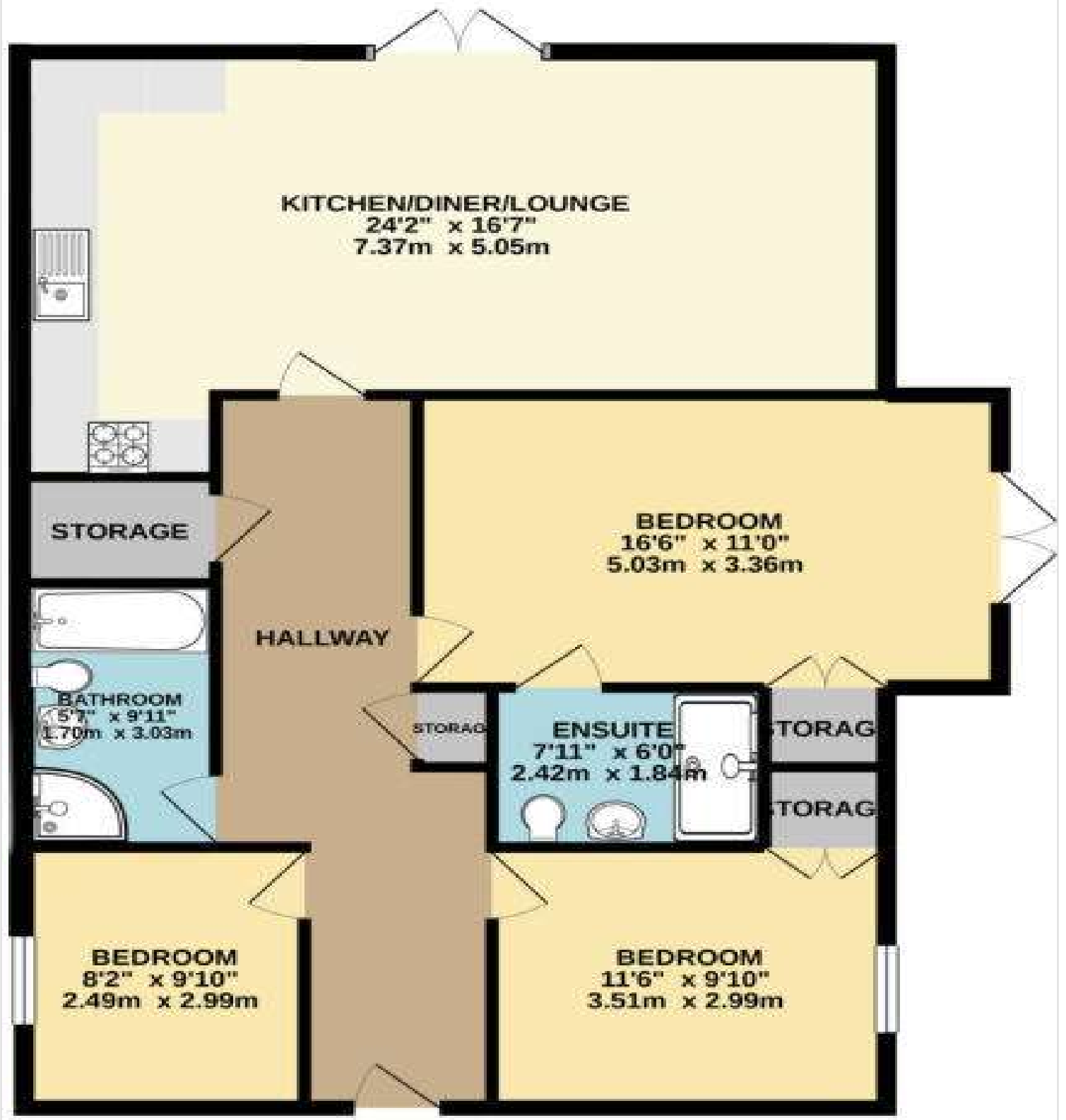
Medbourne, MK5 6FF



The agent has been advised of:

Service Charge: £415 per yearly quarter
Lease Remaining: 106 years





Waiting on EPC



Notice

Please note we have not tested any apparatus, fixtures, fittings, or services. Interested parties must undertake their own investigation into the working order of these items. All measurements are approximate and photographs provided for guidance only.

Bletchley /Milton Keynes

T: 01908 373580

T: 01908 690700

Leighton Buzzard

T: 01525 572168

E: info@inspiredagents.co.uk
www.inspiredagents.co.uk

