



Whyke Marsh Chichester PO19

£750 per month - Available 28/11/2014

HAMPTONS
INTERNATIONAL

Beyond your expectations

Whyke Marsh Chichester PO19

£750 per month - Available 28/11/2014



Modern, first floor apartment situated on the outskirts of Chichester. EPC: 81

1 bedroom | 1 bathroom | First Floor | Chichester | Garden | Parking | Storage | Shed.

Description

Modern first floor apartment situated on the outskirts of Chichester. Well equipped and separate fully fitted kitchen with white goods, good size Living room with double aspect. The Bedroom has fitted wardrobes and is good size, the Bathroom has a white suite with shower over the bath and good storage in the hallway. The apartment benefits from a small private garden with shed and allocated parking space.

Situation

Situated within easy access of the A27 and walking distance from Chichester train station and bus station.

Furnishing

Unfurnished



Hamptons Chichester Lettings

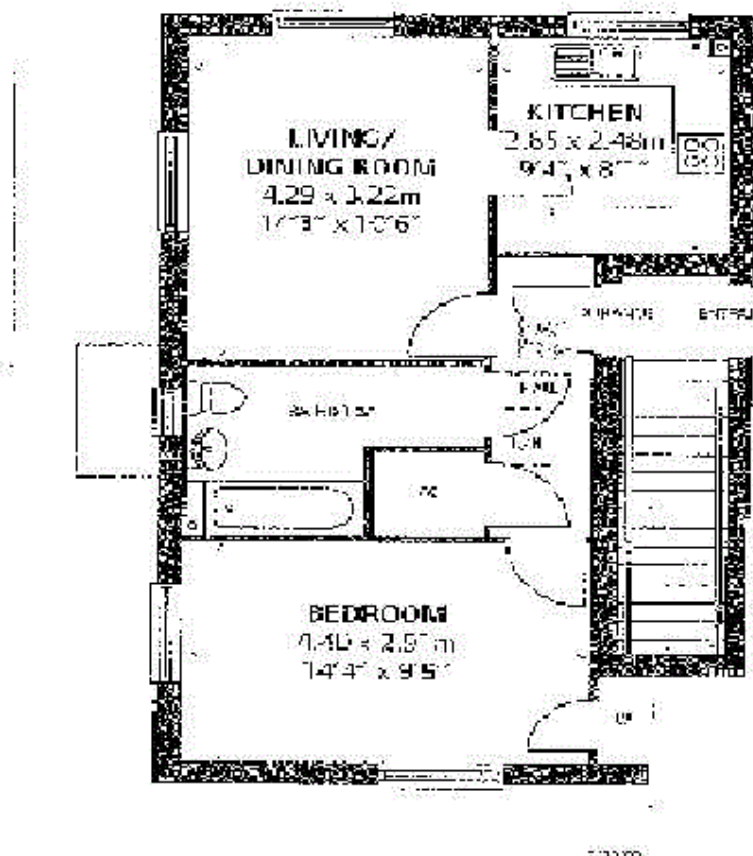
27 East Street

Chichester PO19 1HS

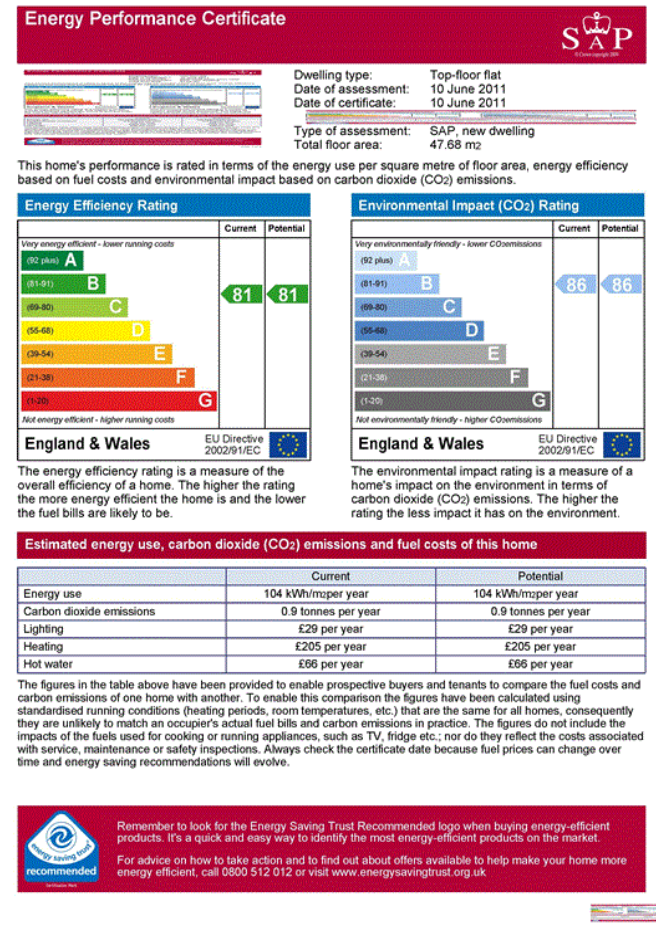
Tel: 01243 939 002 - chichesterlettings@hamptons-int.com

www.hamptons.co.uk

Floorplan



Energy Performance Certificate (EPC)



For clarification, we wish to inform prospective purchasers that we have prepared these sales particulars as a general guide. We have not verified permissions, nor carried out a survey, tested the services, appliances and specific fittings. Room sizes are approximate and rounded: they are taken between internal wall surfaces and therefore include cupboards/shelves, etc. Accordingly, they should not be relied upon for carpets and furnishings. It should also be noted that all fixtures and fittings, carpeted, curtains/blinds, kitchen equipment and garden statuary, whether fitted or not, are deemed removable by the vendor unless specifically itemised with these particulars.

Hamptons Chichester Lettings

27 East Street

Chichester PO19 1HS

Tel: 01243 939 002 - chichesterlettings@hamptons-int.com

www.hamptons.co.uk

HAMPTONS
INTERNATIONAL

Beyond your expectations