



White Rock Paignton

An exciting new development of high quality homes.

White Rock is conveniently located between Brixham Road and Waddeton Road, less than 3 miles from the centre of Paignton and a mile from Goodrington. Here, this exciting new development offers a superb range of 2, 3 and 4 bedroom homes, ideally situated for local amenities, including White Rock Primary School, a selection of local shops, bus routes and other facilities.

At the heart of the English Riviera's 22 mile coastline and well known for its sandy beaches, Victorian pier, first class attractions and pretty harbour, Paignton offers a diverse range of independent shops and high street stores. With its wonderfully warm microclimate, the town's parks and gardens offer the perfect place to relax. During the summer, Paignton hosts many festivals and fairs, while all year round there are lots of attractions to keep the whole family entertained.

Nearby, Goodrington provides the nearest beach to White Rock and with its Blue Flag status, colourful beach huts and nearby waterpark; it's always a favourite.

The largest and most famous seaside resort in Devon, Torquay, is just 5 miles from White Rock. With its iconic palm trees, busy harbour and international marina, the town exudes charm and sophistication and is likened by some to a Mediterranean resort. When you want a change, it's great to escape into the nearby countryside that is as deep and lush as any in the county. Picturesque villages, Devonshire cream teas and country pubs are abundant and with a vast range of attractions, including the rugged beauty of Dartmoor National Park, you'll be spoilt for choice for idyllic family days out.

White Rock

Paignton, Devon TQ4 7RZ | 01803 701 042

lindenhomes.co.uk

Linden
HOMES

Development layout

4 bedroom home

- The Knightthayes
- The Berrington
- The Dunstable
- The Lydford
- The Hambleton
- The Buckland
- The Burnet
- The Granger
- The Goodridge

3 bedroom home

- The Farway
- The Farway 3
- The Farway 4
- The Branscombe
- The Greenway
- The Compton

2 bedroom home

- The Claydon
- The Killerton
- The Bolberry
- The Arlington

1 bedroom apartment

- The Sandridge

* Registered Provider Housing



Not to scale. Trees and landscaping are indicative only and may alter during construction. The trees, shrubs and gardens shown are for illustrative purposes only. For more information, please contact your Sales Executive for specific details.



Specification

We give you so much more

White Rock

Paignton, Devon TQ4 7RZ | 01803 701 042

lindenhomes.co.uk

Linden
HOMES

Specification

We give you so much more

Each home will be independently surveyed during construction by NHBC, who will issue their 10 year warranty certificate on completion of the home.

2 bedroom homes

3 bedroom homes

4 bedroom homes

Kitchens

Choice of contemporary styled kitchens*	■	■	■
Inset stainless steel single bowl sink and drainer	■	■	■
Inset stainless steel 1.5 bowl sink and drainer			■
Chrome mixer taps	■	■	■
Stainless steel built in single oven	■	■	■
Stainless steel built in double oven			■
Ceramic glass hob			■
Stainless steel hob	■	■	■
Stainless steel integrated pull out hood	■	■	■
Stainless steel chimney extractor hood			■
Soft close drawers and doors	■	■	■

Bathrooms & ensuites

Contemporary white sanitaryware and chrome fittings	■	■	■
Choice of ceramic wall tiles*	■	■	■
Low voltage extractor fan	■	■	■
Enclosed shower cubicle with shower and glazed screen to ensuite		■	■

Electrical & lighting

White electrical fittings throughout	■	■	■
TV point to living room and bedroom 1	■	■	■
BT point to hall and living room	■	■	■

Internal finishes

Gloss white internal doors	■	■	■
Brass Satin Finish style levers with matching hinges	■	■	■
Smooth white ceilings	■	■	■
White wood staircase with gloss white handrail to stairs	■	■	■

Peace of mind

Mains smoke detector with battery back-up to hall and landing	■	■	■
---	---	---	---

Many homes will come complete with power and light to garages, and personnel doors linking to your home†.

Personal Optional Extras

When it comes to choice, Linden Homes' philosophy is clear, you can never have too much. We also appreciate that making the choices for your new home is an important decision and one that should be made over time and in comfort.

Optional extras include:

Additional ceramic tiling* Additional power point/TV/BT sockets* Integrated or freestanding appliances* Fitted wardrobes*

*Choice where stage of construction permits. †Please refer to the Sales Executive for details.

Linden Homes subscribes to the consumer Code of Conduct.

Please refer to www.consumercodeforhomebuilders.com or ask your Sales Executive for further information.

The specifications of all our homes is correct at the date of going to press but may be subject to change as necessary and without notice. Please ask your Sales Executive for more information. June 2021.

Linden
HOMES



Around the local neighbourhood

- | | | |
|--|--|---|
| 1 White Rock Primary School | 5 Palace Theatre | 9 Torbay Leisure Centre |
| 2 South Devon College | 6 Paignton Pier | 10 Churston Library |
| 3 Paignton Community & Sports Academy | 7 Vue Cinema | 11 Churston Golf Club |
| 4 Paignton Zoo | 8 Paignton Library & Information Centre | 12 Churston Ferrers Grammar School |

Distances shown are by road (Source: Google). Fastest journey times are shown (Source: National Rail Enquiries). October 2020.



The Compton 3 bedroom home

White Rock

Paignton, Devon TQ4 7RZ | 01803 701 042

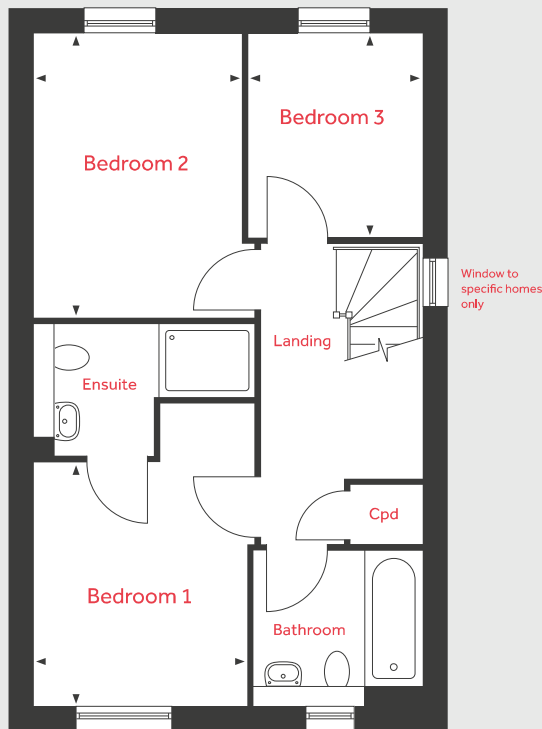
lindenhomes.co.uk

Linden
HOMES

The Compton

3 bedroom home

First Floor



Ground Floor

Living/Dining Room

5.33m x 4.84m 17'5" x 15'10"

Kitchen*

3.13m x 2.67m 10'3" x 8'8"

First Floor

Bedroom 1

3.03m x 2.65m 10'0" x 8'7"

Bedroom 2

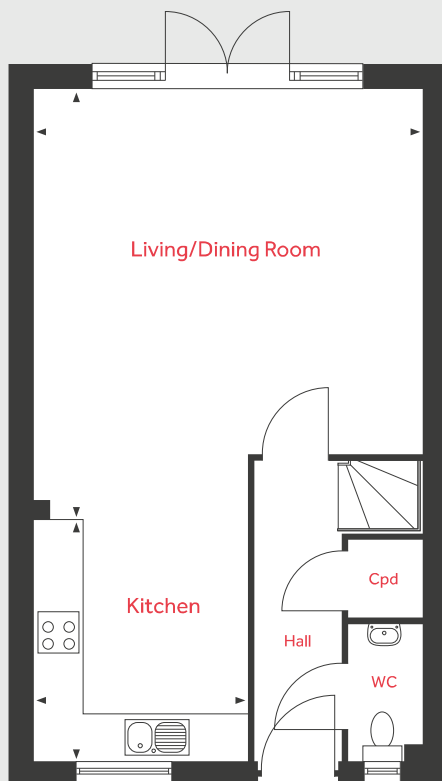
3.55m x 2.58m 11'6" x 8'5"

Bedroom 3

2.54m x 2.15m 8'3" x 7'1"

*Please ask to see separate kitchen layouts.

Ground Floor



Cpd Cupboard ◀ ▶ Measuring points

Please note, floorplans and dimensions are taken from architectural drawings and are for guidance only. Dimensions stated are within a tolerance of plus or minus 50mm. Overall dimensions are usually stated and there may be projections into these. With our continual improvement policy we constantly review our designs and specification to ensure we deliver the best product to our customers. Computer generated images not to scale. Finishes and materials may vary and landscaping is illustrative only. Kitchen layouts are indicative only and may change. To confirm specific details on our homes please ask your Sales Executive. October 2020.

Linden

HOMES



The Knighthayes

4 bedroom home

White Rock

Paignton, Devon TQ4 7RZ | 01803 701 042

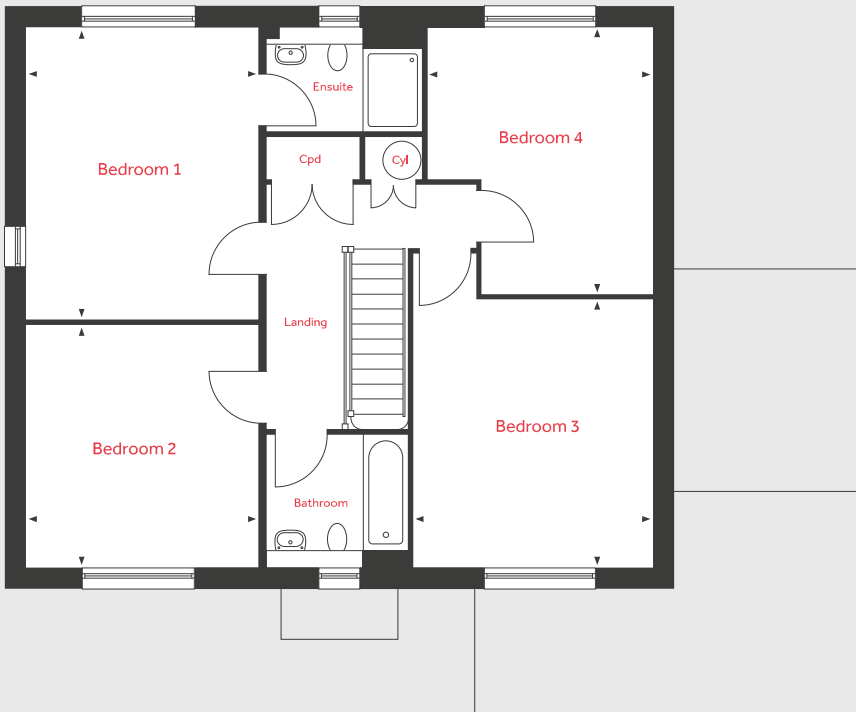
lindenhomes.co.uk

Linden
HOMES

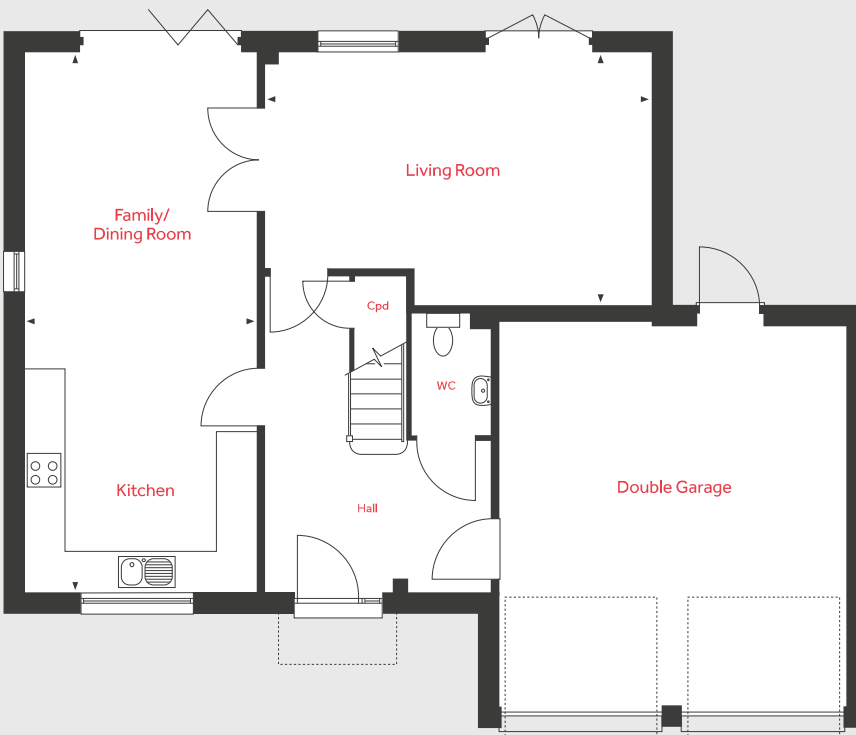
The Knighthayes

4 bedroom home

First Floor



Ground Floor



Ground Floor

Living Room

5.76m x 3.78m 18'11" x 12'5"

Kitchen*/Family/Dining Room

8.07m x 3.46m 26'6" x 11'4"

First Floor

Bedroom 1

4.37m x 3.46m 14'4" x 11'4"

Bedroom 2

3.60m x 3.46m 11'10" x 11'4"

Bedroom 3

3.98m x 3.60m 13'1" x 11'8"

Bedroom 4

3.98m x 3.35m 13'1" x 11'0"

*Please ask to see separate kitchen layouts.

Cyl Hot water cylinder ◀ ▶ Measuring points
Cpd Cupboard

Please note, floorplans and dimensions are taken from architectural drawings and are for guidance only. Dimensions stated are within a tolerance of plus or minus 50mm. Overall dimensions are usually stated and there may be projections into these. With our continual improvement policy we constantly review our designs and specification to ensure we deliver the best product to our customers. Computer generated images not to scale. Finishes and materials may vary and landscaping is illustrative only. Kitchen layouts are indicative only and may change. To confirm specific details on our homes please ask your Sales Executive. October 2020.

Linden
HOMES



The Berrington 4 bedroom home

Please note: External chimney to homes 147, 155, 173 & 180 only.

White Rock

Paignton, Devon TQ4 7RZ | 01803 701 042

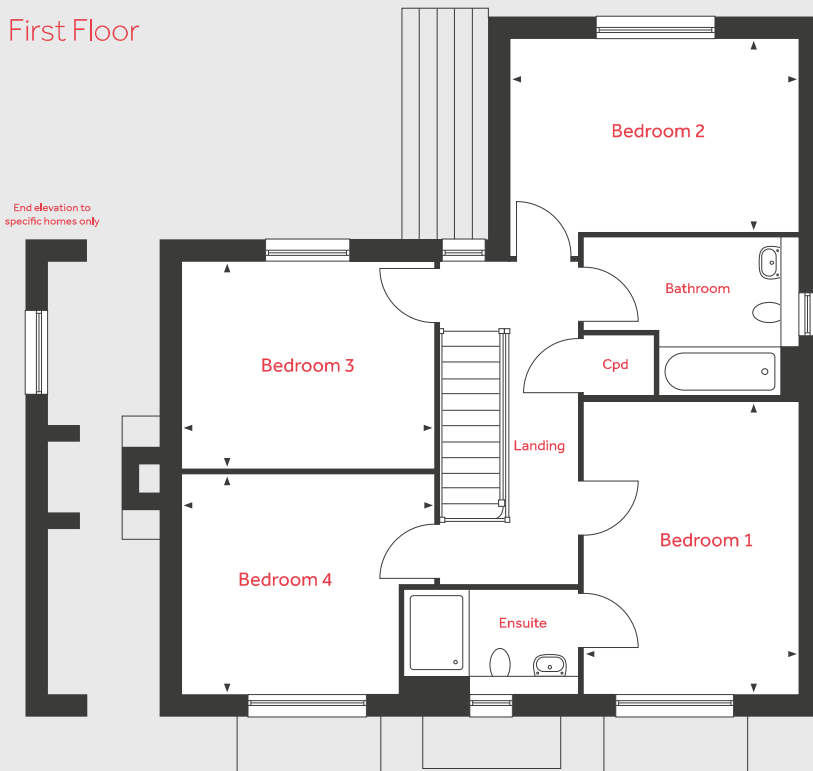
lindenhomes.co.uk

Linden
HOMES

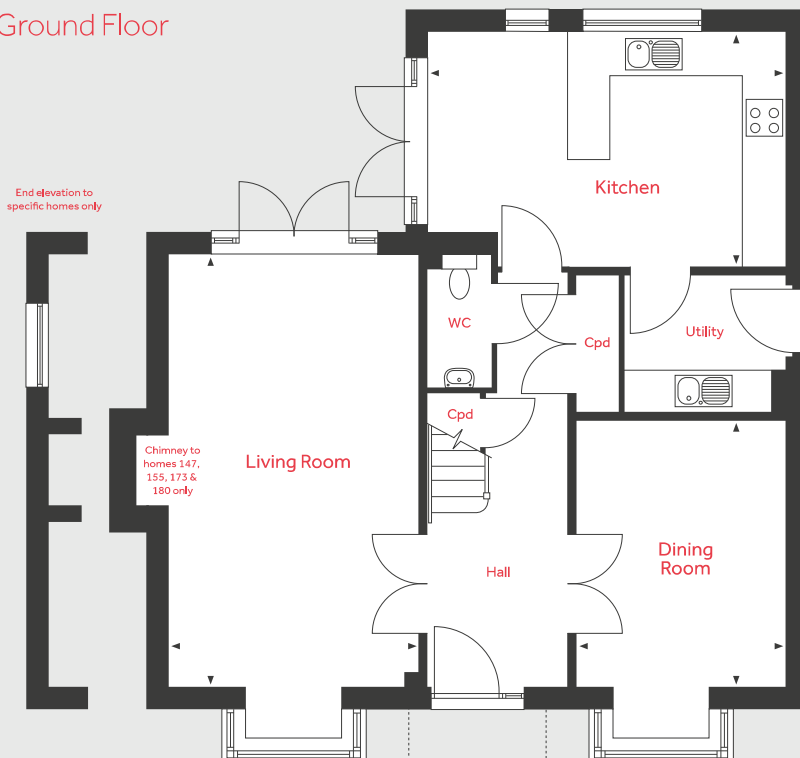
The Berrington

4 bedroom home

First Floor



Ground Floor



Ground Floor

Living Room

6.10m x 3.50m 20'0" x 11'6"

Dining Room

3.75m x 2.95m 12'4" x 9'8"

Kitchen*

5.05m x 3.30m 16'7" x 10'10"

First Floor

Bedroom 1

4.10m x 3.02m 13'6" x 9'11"

Bedroom 2

4.05m x 2.70m 13'4" x 8'8"

Bedroom 3

3.54m x 2.90m 11'8" x 9'5"

Bedroom 4

3.54m x 3.10m 11'8" x 10'2"

*Please ask to see separate kitchen layouts.

Cpd Cupboard Measuring points

Please note, floorplans and dimensions are taken from architectural drawings and are for guidance only. Dimensions stated are within a tolerance of plus or minus 50mm. Overall dimensions are usually stated and there may be projections into these. With our continual improvement policy we constantly review our designs and specification to ensure we deliver the best product to our customers. Computer generated images not to scale. Finishes and materials may vary and landscaping is illustrative only. Kitchen layouts are indicative only and may change. To confirm specific details on our homes please ask your Sales Executive. October 2020.

Linden
HOMES



The Lydford 4 bedroom home

White Rock

Paignton, Devon TQ4 7RZ | 01803 701 042

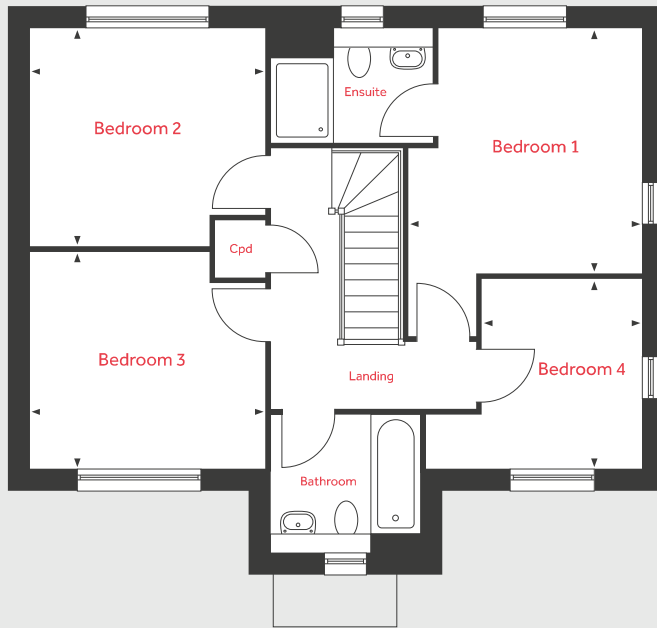
lindenhomes.co.uk

Linden
HOMES

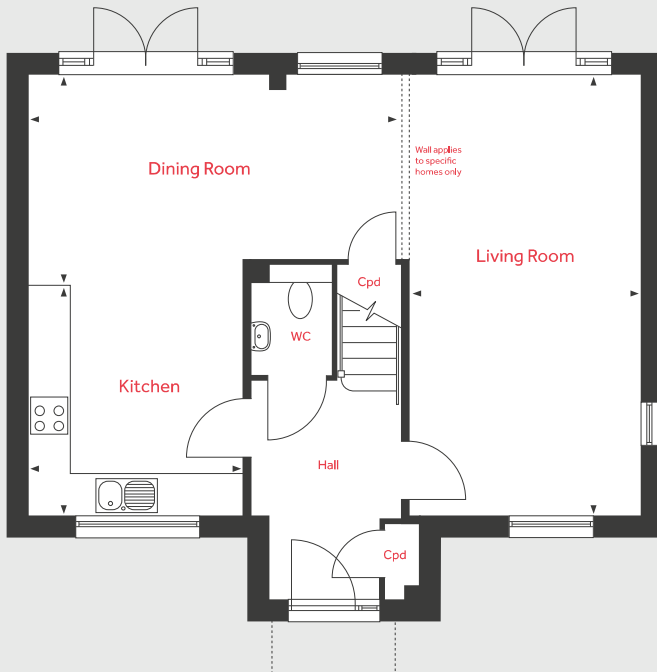
The Lydford

4 bedroom home

First Floor



Ground Floor



Ground Floor

Living Room	6.31m x 3.31m	20'7" x 10'9"
Kitchen*	3.69m x 3.08m	12'1" x 10'1"
Dining Room	5.35m x 2.62m	17'7" x 8'6"

Ground Floor (Variation)

Living Room	6.31m x 3.31m	20'8" x 10'10"
Kitchen*	3.08m x 2.62m	10'1" x 8'7"
Dining Room	3.69m x 3.08m	12'1" x 10'1"

First Floor

Bedroom 1	3.50m x 3.34m	11'5" x 11'0"
Bedroom 2	3.35m x 3.10m	11'0" x 10'2"
Bedroom 3	3.37m x 3.10m	11'1" x 10'2"
Bedroom 4	2.71m x 2.29m	8'9" x 7'5"

*Please ask to see separate kitchen layouts.

Cpd Cupboard ◀ ▶ Measuring points

Please note, floorplans and dimensions are taken from architectural drawings and are for guidance only. Dimensions stated are within a tolerance of plus or minus 50mm. Overall dimensions are usually stated and there may be projections into these. With our continual improvement policy we constantly review our designs and specification to ensure we deliver the best product to our customers. Computer generated images not to scale. Finishes and materials may vary and landscaping is illustrative only. Kitchen layouts are indicative only and may change. To confirm specific details on our homes please ask your Sales Executive. October 2020.

Linden

HOMES



The Hambledon

4 bedroom home

White Rock

Paignton, Devon TQ4 7RZ | 01803 701 042

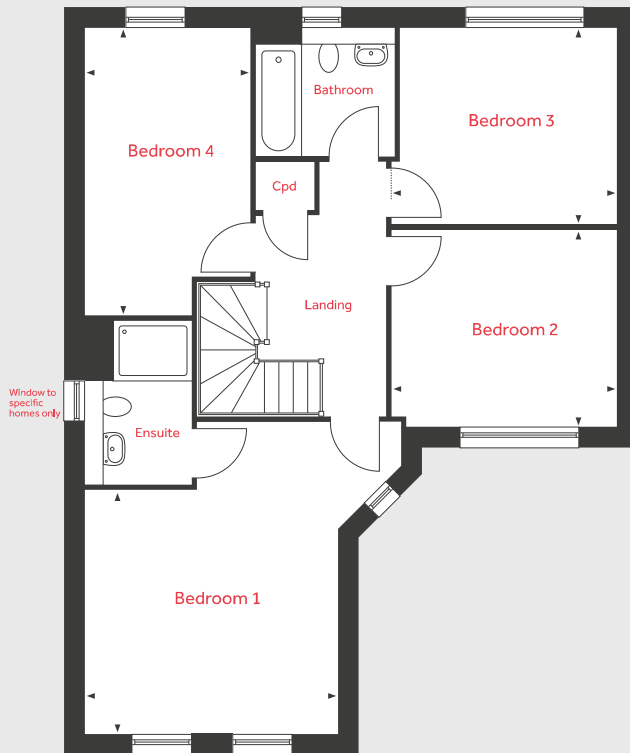
lindenhomes.co.uk

Linden
HOMES

The Hambledon

4 bedroom home

First Floor



Ground Floor

Living Room

4.82m x 3.81m 15'8" x 12'6"

Kitchen*/Dining Room

6.31m x 3.85m 20'8" x 12'6"

First Floor

Bedroom 1

3.84m x 3.72m 12'6" x 12'2"

Bedroom 2

3.43m x 3.00m 11'3" x 9'8"

Bedroom 3

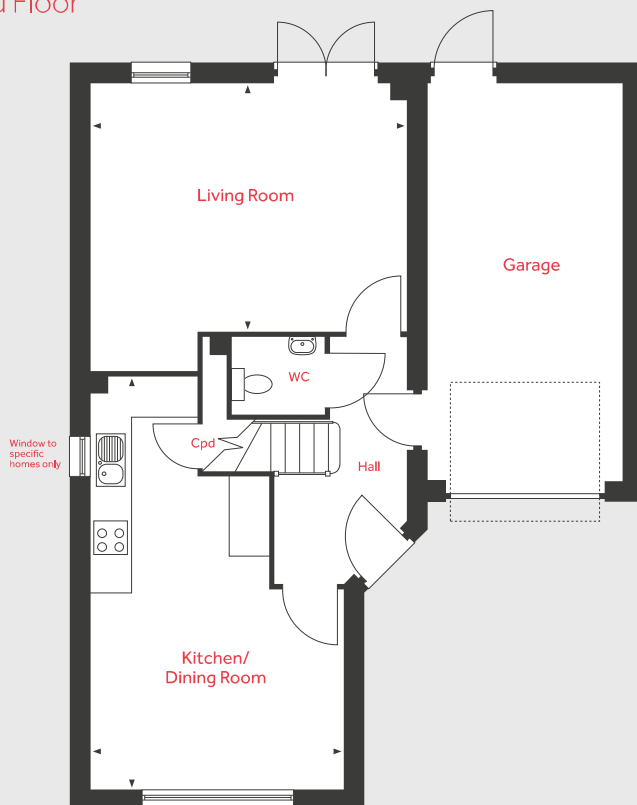
3.43m x 3.00m 11'3" x 9'8"

Bedroom 4

4.40m x 2.51m 14'5" x 8'2"

*Please ask to see separate kitchen layouts.

Ground Floor



Cpd Cupboard ◀ ▶ Measuring points

Please note, floorplans and dimensions are taken from architectural drawings and are for guidance only. Dimensions stated are within a tolerance of plus or minus 50mm. Overall dimensions are usually stated and there may be projections into these. With our continual improvement policy we constantly review our designs and specification to ensure we deliver the best product to our customers. Computer generated images not to scale. Finishes and materials may vary and landscaping is illustrative only. Kitchen layouts are indicative only and may change. To confirm specific details on our homes please ask your Sales Executive. October 2020.

Linden
HOMES



The Buckland 4 bedroom home

White Rock

Paignton, Devon TQ4 7RZ | 01803 701 042

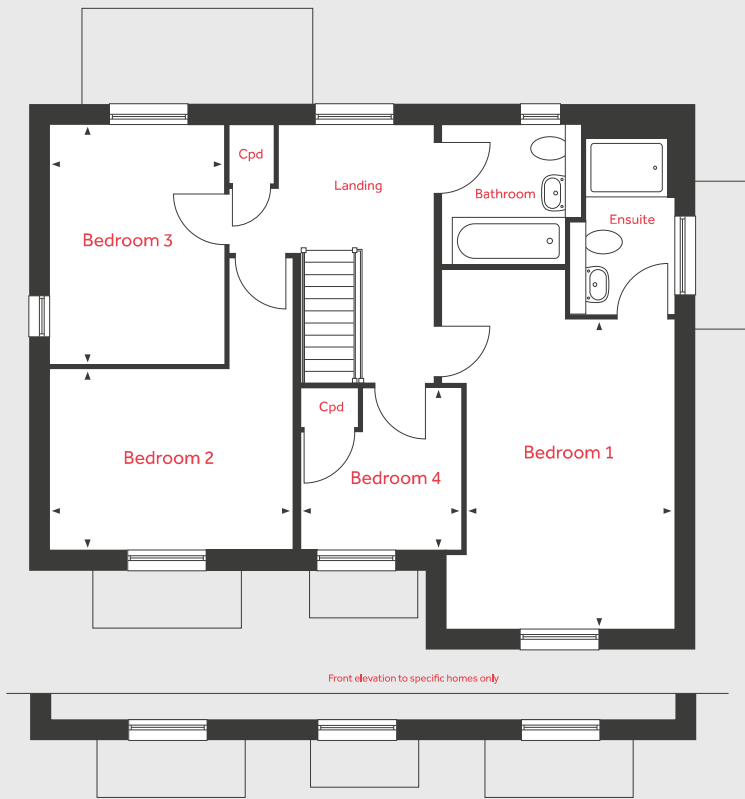
lindenhomes.co.uk

Linden
HOMES

The Buckland

4 bedroom home

First Floor



Ground Floor

Living Room

7.63m x 3.52m 25'0" x 11'7"

6.43m x 3.52m 21'1" x 11'7" (Home 238)

Kitchen/Dining Room*

5.05m x 3.67m 16'7" x 12'1"

Family Room

3.67m x 2.74m 12'1" x 9'0"

First Floor

Bedroom 1

4.66m x 3.11m 15'4" x 10'3"

3.49m x 3.11m 11'5" x 10'3" (Home 238)

Bedroom 2

3.67m x 2.71m 12'1" x 8'11"

Bedroom 3

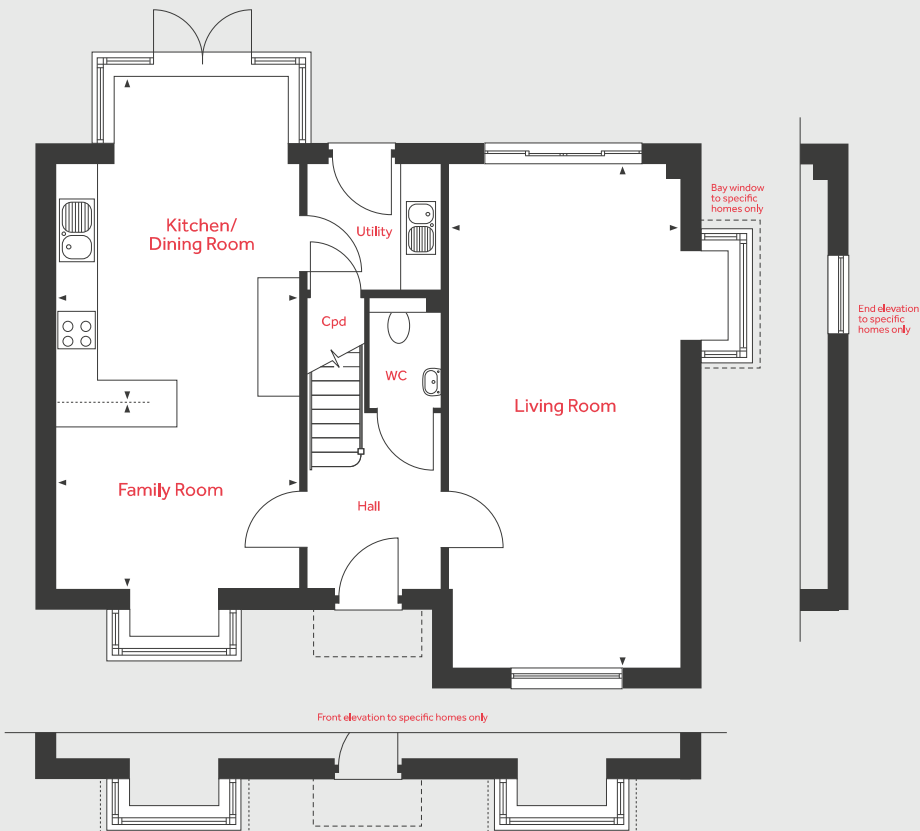
3.61m x 2.63m 11'10" x 8'8"

Bedroom 4

2.43m x 2.41m 8'0" x 7'11"

*Please ask to see separate kitchen layouts.

Ground Floor



Cpd Cupboard ◀ ▶ Measuring points

Please note, floorplans and dimensions are taken from architectural drawings and are for guidance only. Dimensions stated are within a tolerance of plus or minus 50mm. Overall dimensions are usually stated and there may be projections into these. With our continual improvement policy we constantly review our designs and specification to ensure we deliver the best product to our customers. Computer generated images not to scale. Finishes and materials may vary and landscaping is illustrative only. Kitchen layouts are indicative only and may change. To confirm specific details on our homes please ask your Sales Executive. October 2020.

Linden
HOMES



The Grainger

4 bedroom home

White Rock

Paignton, Devon TQ4 7RZ | 01803 701 042

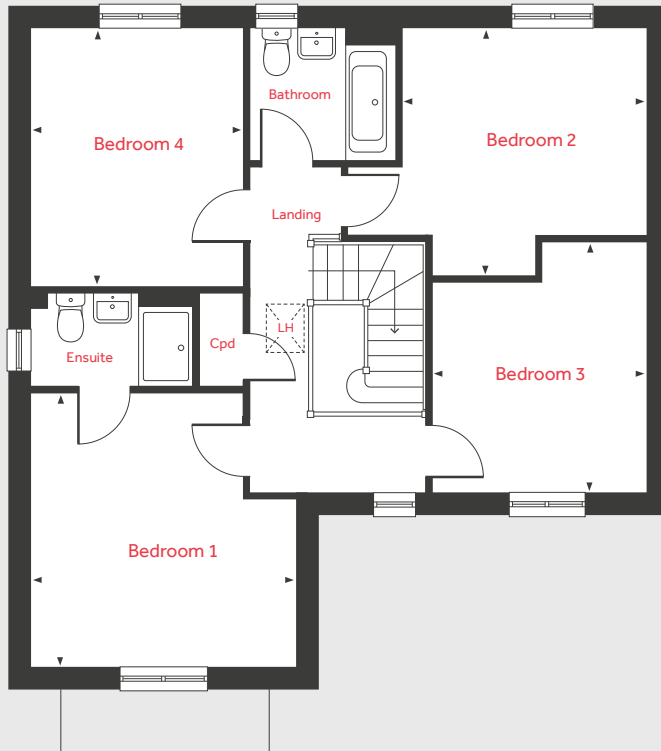
lindenhomes.co.uk

Linden
HOMES

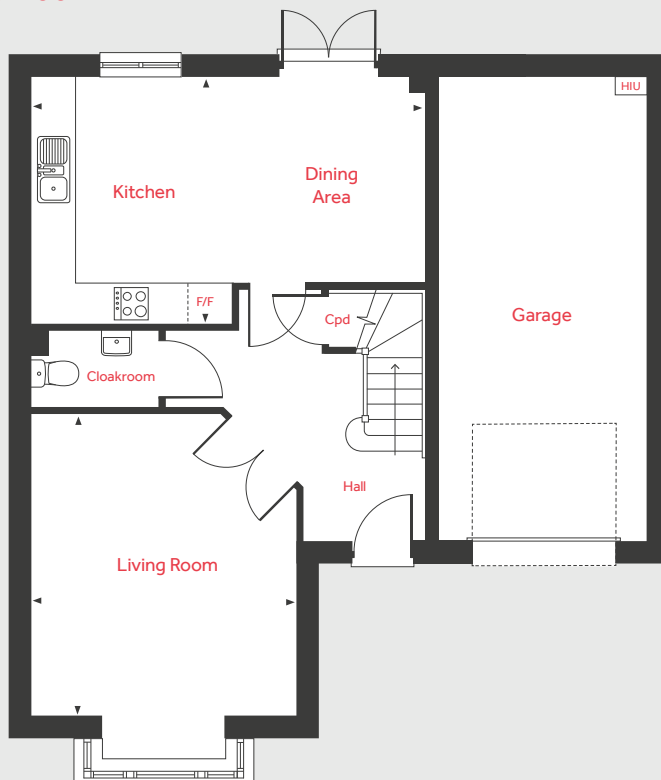
The Grainger

4 bedroom home

First Floor



Ground Floor



Ground Floor

Living Room
4.39m x 3.90m 14'5" x 12'10"

Kitchen/Dining Area
5.81m x 3.62m 19'1" x 11'11"

First Floor

Bedroom 1
4.01m x 3.90m 13'2" x 12'10"

Bedroom 2
3.70m x 3.58m 12'2" x 11'9"

Bedroom 3
3.65m x 3.17m 12'0" x 10'5"

Bedroom 4
3.79m x 3.11m 12'5" x 10'2"

LH Loft hatch F/F Space for fridge freezer
Cpd Cupboard ◀ ▶ Measuring points

Please note, floor plans and dimensions are taken from architectural drawings and are for guidance only. Dimensions stated are within a tolerance of plus or minus 50mm. Overall dimensions are usually stated and there may be projections into these. With our continual improvement policy we constantly review our designs and specification to ensure we deliver the best product to our customers. Computer generated images not to scale. Finishes and materials may vary and landscaping is illustrative only. Kitchen layouts are indicative only and may change. To confirm specific details on our homes please ask your Sales Executive. April 2021.